

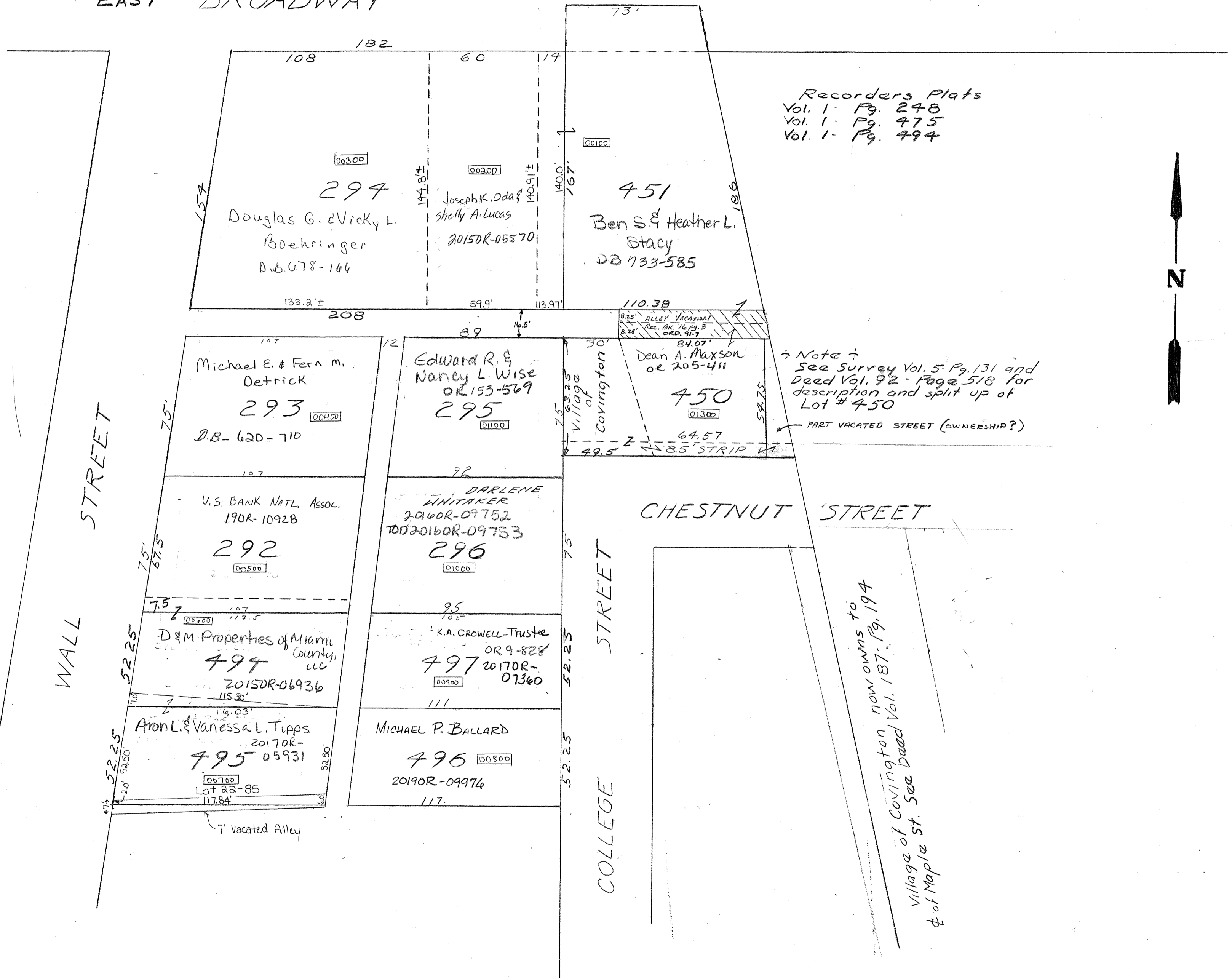
COVINGTON

PLAT No. 60

Scale 1" = 40 Feet

SMDA NUMBER  
H19-NH060-\_-\_-\_-\_-

EAST BROADWAY



Recorders Plats  
Vol. 1 - Pg. 248  
Vol. 1 - Pg. 475  
Vol. 1 - Pg. 494



Note:  
See Survey Vol. 5 Pg. 131 and  
Deed Vol. 92 - Page 518 for  
description and split up of  
Lot # 450

PART VACATED STREET (OWNERSHIP?)

Village of Covington now owns to  
of Maple St. See Deed Vol. 187-Pg. 194

108 182 60 14 73'

157 141.81± 140.91± 140.0' 167' 189'

00300 294 Douglas G. & Vicki L. Boehringer D.B. 678-164

00200 Joseph K. Oda & Shelly A. Lucas 2015DR-05570

00100 451 Ben S. & Heather L. Stacy DB 733-585

133.2'± 59.9' 113.97' 110.38'

107 107 89 14.5' 30' 84.07'

75' 67.5' 75' 52.25' 52.25' 52.25' 52.25'

00400 293 Michael E. & Fern M. Detrick D.B. 620-710

01100 295 Edward R. & Nancy L. Wise OR 153-569

01300 450 Dean A. Maxson OR 205-411

00500 292 U.S. BANK NATL. ASSOC. 190R-10928

01000 296 DARLENE WHITAKER 2016OR-09752 2012016OR-09753

00900 497 K.A. CROWELL-Trustee OR 9-828 2017OR-07360

00700 495 Aron L. & Vanessa L. Tipps 2017OR-05931 Lot 23-85 117.84'

00800 496 MICHAEL P. BALLARD 2019OR-09976

8.25' ALLEY VACATED Rec. BK. 16, Pg. 3 ORD. 91-7 8.25'

64.57' 85' STRIP 49.5'

CHESTNUT STREET

COLLEGE STREET

WALL STREET