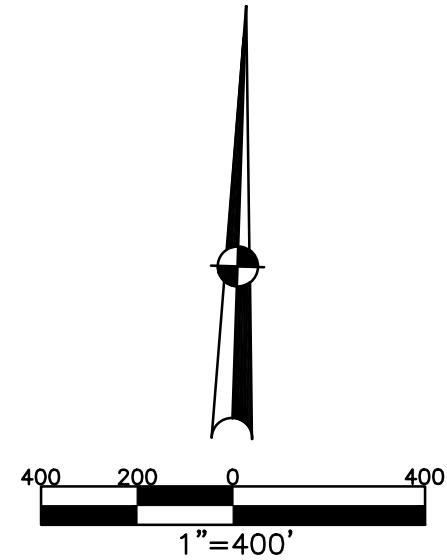


CONCORD TWP.
MIAMI COUNTY, OHIO

SECTION 31 TOWN 5 RANGE 6

PARCEL NUMBER
C06-043700

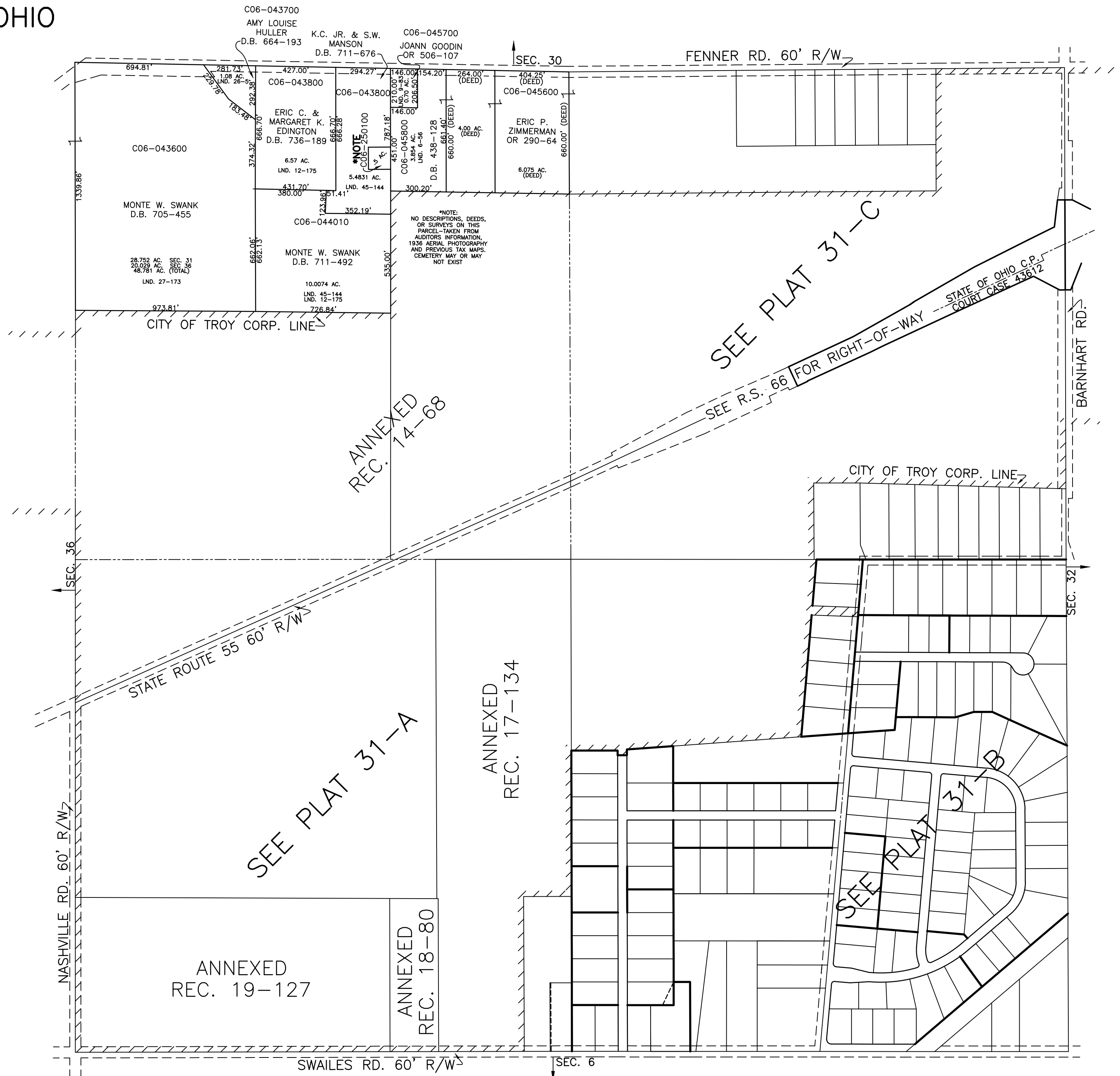
PLAT 31



ABBREVIATION LEGEND		
20140R-07759	=	RECORDER'S DOCUMENT NUMBER
OR 257-619	=	OFFICIAL RECORD 257 PAGE 619
D.B. 613-172	=	DEED BOOK 613, PAGE 172
REC. 15-72	=	RECORDER'S PLAT BOOK 15, PAGE 72
LND. 33-15	=	LAND SURVEY VOLUME 33, PAGE 15
LOT 19-12	=	LOT SURVEY VOLUME 19, PAGE 12
R.R. 8-29	=	ROAD RECORD VOLUME 8, PAGE 29
R/W	=	RIGHT OF WAY
C/W	=	CENTERLINE
AC.	=	ACRES
TWP.	=	TOWNSHIP
TR.	=	TRACT
②	=	LOT CREATED BY RECORDER'S PLAT

LINE LEGEND		
	=	Blow-up Boundary
	=	Property Line
	=	Lot Split Line
	=	Section Line
	=	Centerline
	=	Right-of-Way Line
	=	Corporation Line

SURVEY INDEX		
NORTHEAST QUARTER		
LND. 2-113	LND. 27-165	REC. 9-118 ANNEX
LND. 2-209	LND. 28-5	
LND. 7-200	LND. 28-16	
LND. 8-34	LND. 28-182	
LND. 10-106	LND. 31-161	
LND. 11-28	LND. 32-133	
LND. 21-63	LND. 32-179	
LND. 22-7	LND. 47-70	
LND. 22-75		
LND. 23-15		
LND. 24-44		
LND. 24-50		
LND. 24-79		
LND. 25-142		
SOUTHEAST QUARTER		
LND. 15-74	REC. 8-58	REC. 17-106 ANNEX
LND. 21-174	REC. 8-96	
LND. 23-117	REC. 8-119	
LND. 23-129	REC. 9-39	
LND. 28-4	REC. 9-122	
LND. 34-133	REC. 10-100	
LND. 35-80	REC. 10-125	
LND. 36-93	REC. 11-25	
LND. 44-23	REC. 12-39	
LND. 44-136	REC. 14-60	
LND. 48-141	REC. 14-80	
LND. 51-72	REC. 14-82	
LND. 55-200	REC. 14-110	
	REC. 14-122	
SOUTHWEST QUARTER		
LND. 15-84	REC. 10-18	
LND. 15-126	REC. 17-134 ANNEX	
LND. 20-21	REC. 18-80 ANNEX	
LND. 31-63	REC. 19-127 ANNEX	
LND. 31-147		
LND. 32-72		
LND. 33-12		
LND. 40-40		
NORTHWEST QUARTER		
LND. 2-113	RD. REC. 8-74	
LND. 6-56	REC. 10-88	
LND. 9-83	REC. 14-68 ANNEX	
LND. 12-175		
LND. 25-5		
LND. 27-173		
LND. 32-72		
LND. 40-144		



PREPARED BY: MIAMI COUNTY ENGINEER'S MAP DEPARTMENT
PAUL P. HUELSKAMP, P.E., P.S., COUNTY ENGINEER
DATE: SEPTEMBER 10, 2014 MB
REVISED: JANUARY 23, 2015 MB