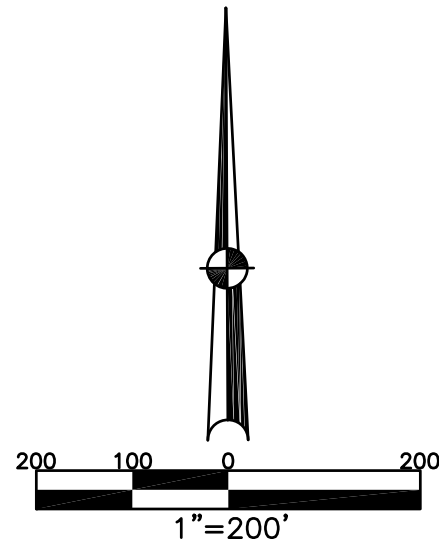


CONCORD TWP.  
MIAMI COUNTY, OHIO

SECTION 30 NW 1/4 TOWN 5 RANGE 6

PARCEL NUMBER  
C06-\_\_\_\_\_

PLAT 30-B



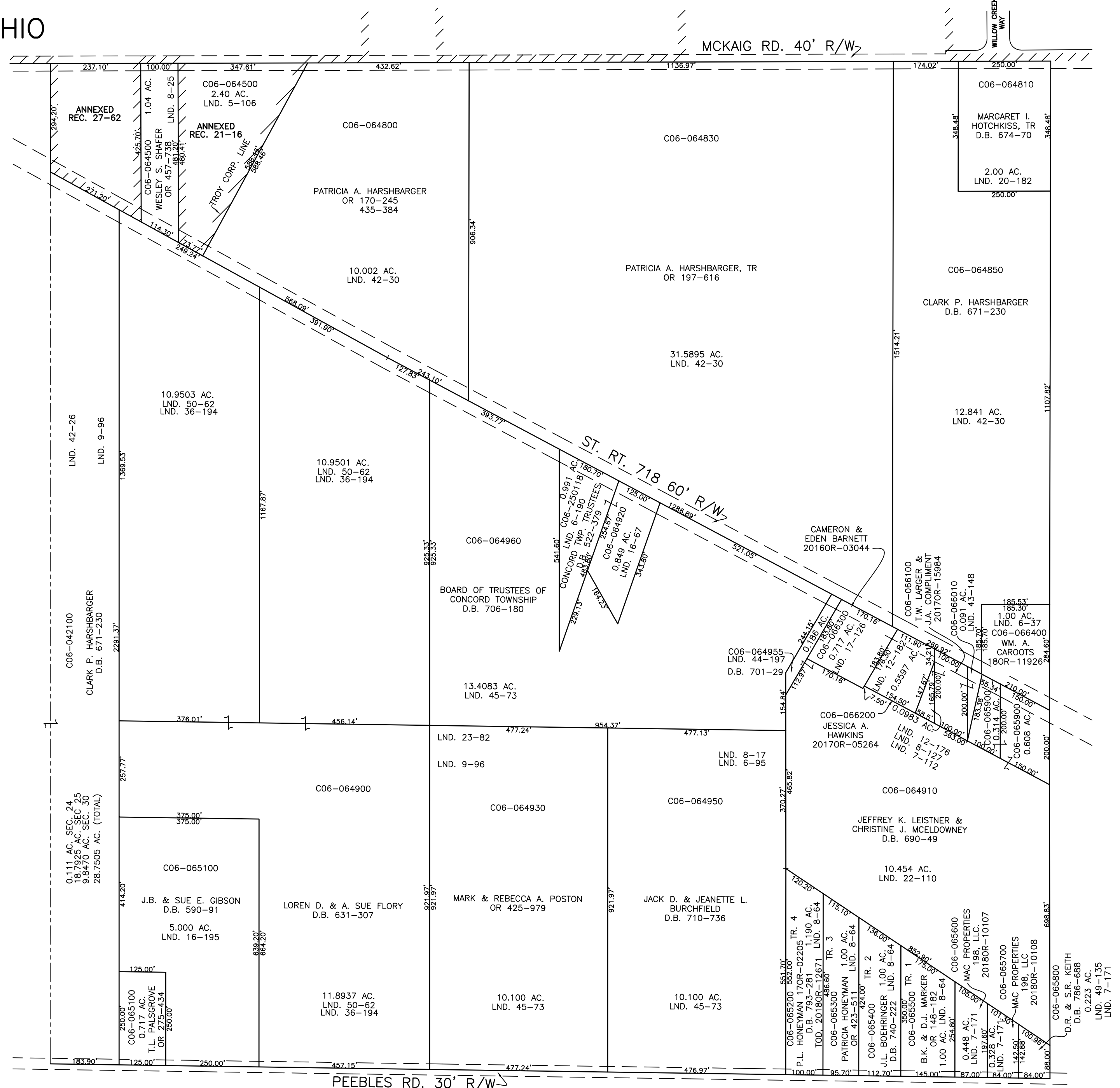
ABBREVIATION LEGEND		
2014OR-07759	=	RECORDER'S DOCUMENT NUMBER
OR 257-619	=	OFFICIAL RECORD 257 PAGE 619
D.B. 613-172	=	DEED BOOK 613, PAGE 172
REC. 15-72	=	RECORDER'S PLAT BOOK 15, PAGE 72
LND. 33-15	=	LAND SURVEY VOLUME 33, PAGE 15
LOT 19-12	=	LOT SURVEY VOLUME 19, PAGE 12
R.R. 8-29	=	ROAD RECORD VOLUME 8, PAGE 29
R/W	=	RIGHT OF WAY
CL	=	CENTERLINE
AC.	=	ACRES
TWP.	=	TOWNSHIP
TR.	=	TRACT
⊙	=	LOT CREATED BY RECORDER'S PLAT

LINE LEGEND		
	=	Blow-up Boundary
	=	Property Line
	=	Lot Split Line
	=	Section Line
	=	Centerline
	=	Right-of-Way Line
	=	Corporation Line

SURVEY INDEX		
LND. 1-181	LND. 12-176	LND. 45-73
LND. 1-182	LND. 12-182	LND. 49-135
LND. 5-106	LND. 15-181	LND. 50-62
LND. 6-3	LND. 16-67	REC. 21-16
LND. 6-95	LND. 16-195	
LND. 8-190	LND. 17-126	
LND. 8-112	LND. 20-182	
LND. 7-112A	LND. 22-110	
LND. 8-117	LND. 23-82	
LND. 8-20	LND. 36-194	
LND. 8-64	LND. 42-26	
LND. 8-127	LND. 42-30	
LND. 9-96	LND. 43-148	
	LND. 44-197	



PREPARED BY: MIAMI COUNTY ENGINEER'S MAP DEPARTMENT  
PAUL P. HUELSKAMP, P.E., P.S., COUNTY ENGINEER  
DATE: AUGUST 25, 2014 MB

REVISED: April 9, 2019 IGRIFIN