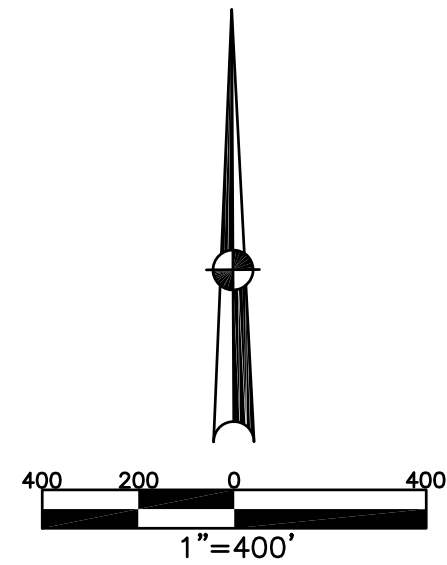


CONCORD TWP.
MIAMI COUNTY, OHIO

SECTION 30 TOWN 5 RANGE 6

PARCEL NUMBER
C06-_____

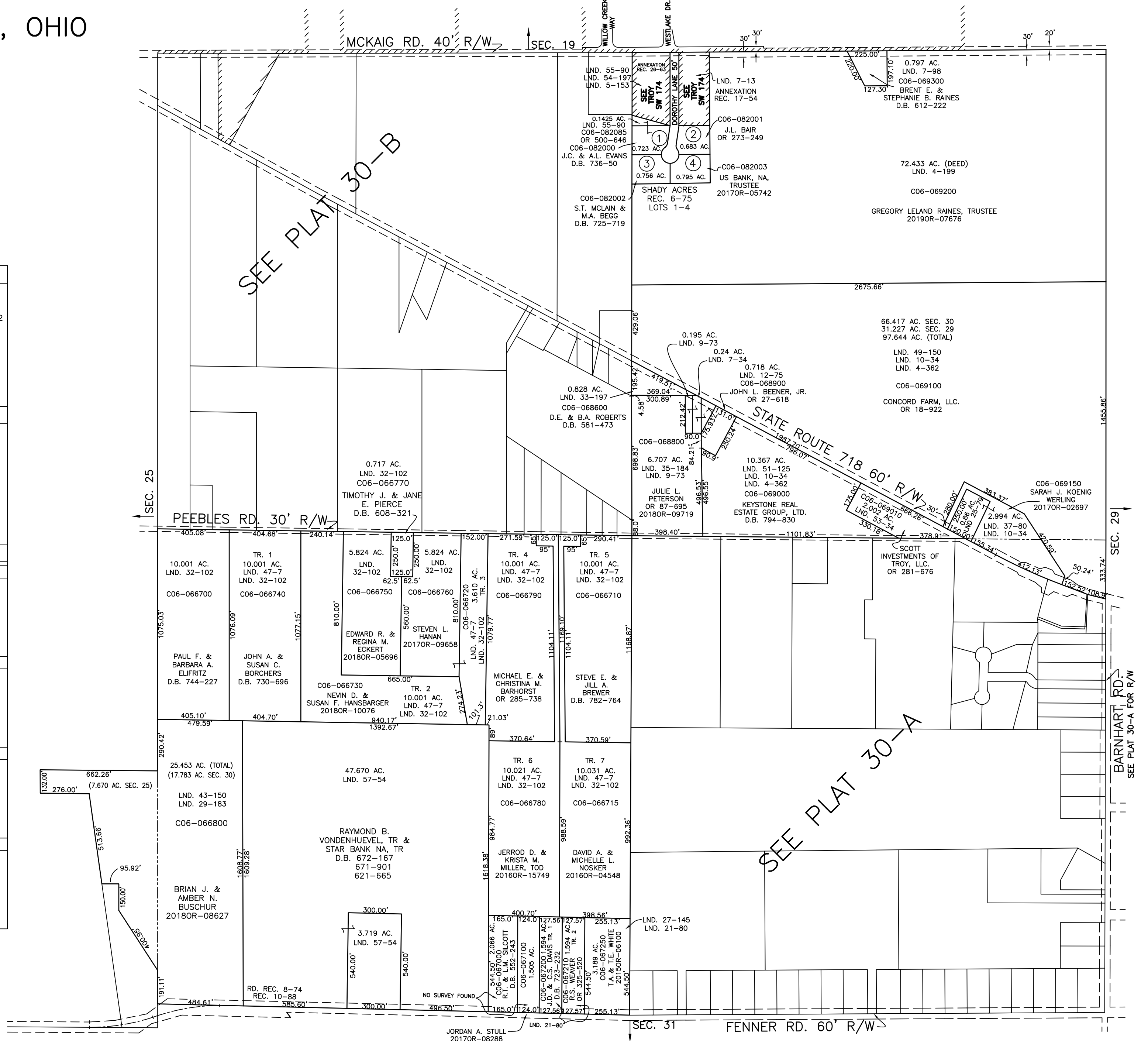
PLAT 30



| ABBREVIATION LEGEND | | | |
|---------------------|---|----------------------------------|--|
| 20140R-07759 | = | RECORDER'S DOCUMENT NUMBER | |
| OR 257-619 | = | OFFICIAL RECORD 257 PAGE 619 | |
| D.B. 613-172 | = | DEED BOOK 613, PAGE 172 | |
| REC. 15-72 | = | RECORDER'S PLAT BOOK 15, PAGE 72 | |
| LND. 33-15 | = | LAND SURVEY VOLUME 33, PAGE 15 | |
| LOT 19-12 | = | LOT SURVEY VOLUME 19, PAGE 12 | |
| R.R. 8-29 | = | ROAD RECORD VOLUME 8, PAGE 29 | |
| R/W | = | RIGHT OF WAY | |
| C | = | CENTERLINE | |
| AC. | = | ACRES | |
| TWP. | = | TOWNSHIP | |
| TR. | = | TRACT | |
| ② | = | LOT CREATED BY RECORDER'S PLAT | |

| LINE LEGEND | | | |
|-------------|---|-------------------|--|
| | = | Blow-up Boundary | |
| | = | Property Line | |
| | = | Lot Split Line | |
| | = | Section Line | |
| | = | Centerline | |
| | = | Right-of-Way Line | |
| | = | Corporation Line | |

| SURVEY INDEX | | | |
|-------------------|-------------|-------------|---------------|
| NORTHEAST QUARTER | | | |
| LND. 1-181 | LND. 12-75 | LND. 54-197 | REC. 6-75 |
| LND. 4-199 | LND. 25-79 | LND. 55-90 | REC. 13-126 |
| LND. 4-362 | LND. 31-67 | | REC. 17-54 |
| LND. 5-153 | LND. 33-197 | | REC. 26-63 |
| LND. 7-13 | LND. 35-184 | | |
| LND. 7-34 | LND. 37-80 | | RD. REC. 8-92 |
| LND. 7-98 | LND. 49-150 | | |
| LND. 9-73 | LND. 51-125 | | |
| LND. 11-15 | LND. 53-34 | | |
| SOUTHEAST QUARTER | | | |
| LND. 1-181 | LND. 25-79 | LND. 42-109 | REC. 6-4 |
| LND. 4-362 | LND. 29-104 | LND. 49-150 | REC. 9-123 |
| LND. 8-167 | LND. 30-200 | | REC. 10-60 |
| LND. 8-176 | LND. 32-49 | | REC. 15-94 |
| LND. 8-183 | LND. 32-71 | | |
| LND. 8-195 | LND. 33-17 | | RS 108 |
| LND. 10-34 | LND. 34-164 | | |
| LND. 18-78 | LND. 37-80 | | |
| LND. 23-79 | LND. 41-197 | | |
| SOUTHWEST QUARTER | | | |
| LND. 1-181 | | | REC. 10-88 |
| LND. 3-209 | | | |
| LND. 21-80 | | | RD. REC. 8-74 |
| LND. 27-145 | | | |
| LND. 29-183 | | | |
| LND. 32-102 | | | |
| LND. 43-150 | | | |
| LND. 47-7 | | | |
| LND. 57-54 | | | |
| NORTHWEST QUARTER | | | |
| LND. 1-181 | LND. 8-17 | LND. 16-195 | LND. 44-197 |
| LND. 5-50 | LND. 8-25 | LND. 17-126 | LND. 45-73 |
| LND. 5-106 | LND. 8-64 | LND. 20-182 | LND. 50-62 |
| LND. 6-37 | LND. 8-127 | LND. 22-110 | |
| LND. 6-95 | LND. 9-96 | LND. 23-82 | REC. 21-16 |
| LND. 6-190 | LND. 12-176 | LND. 36-194 | |
| LND. 7-112 | LND. 12-182 | LND. 42-26 | |
| LND. 7-112A | LND. 15-161 | LND. 42-30 | |
| LND. 7-171 | LND. 16-67 | LND. 43-148 | |



PREPARED BY: MIAMI COUNTY ENGINEER'S MAP DEPARTMENT
PAUL P. HUELSKAMP, P.E., P.S., COUNTY ENGINEER
DATE: AUGUST 25, 2014 MB
REVISED: July 16, 2019 DSTUMPF