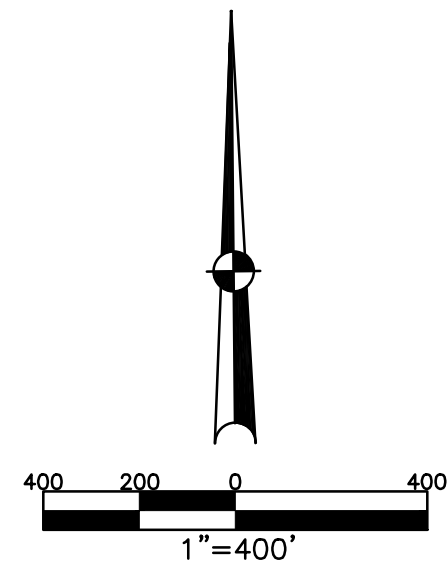


CONCORD TWP.  
MIAMI COUNTY, OHIO

SECTION 29 TOWN 5 RANGE 6

PARCEL NUMBER  
CO6-

PLAT 29



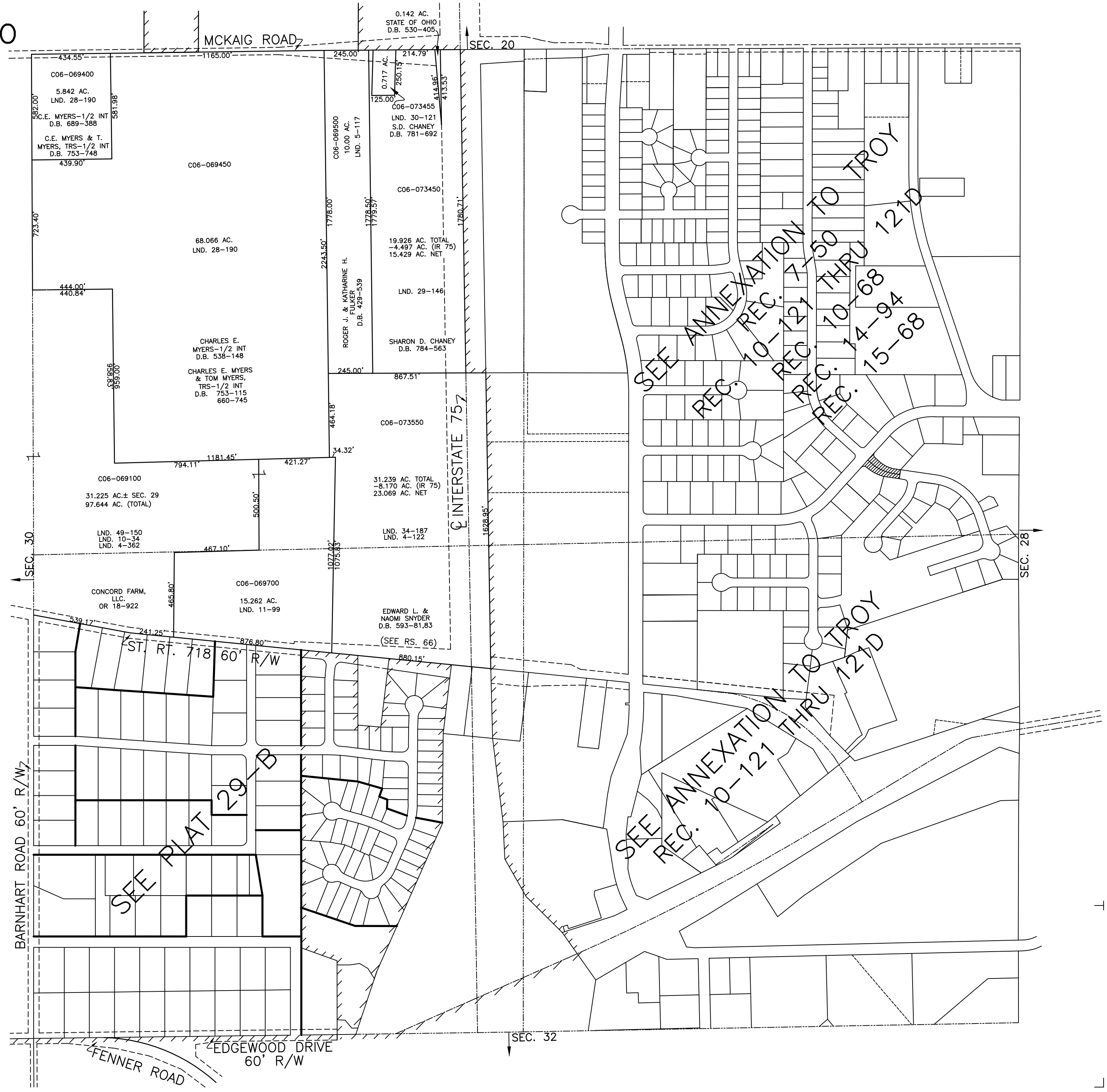
ABBREVIATION LEGEND		
20140R-07759	=	RECORDER'S DOCUMENT NUMBER
OR 257-619	=	OFFICIAL RECORD 257 PAGE 619
D.B. 613-172	=	DEED BOOK 613, PAGE 172
REC. 15-72	=	RECORDER'S PLAT BOOK 15, PAGE 72
LND. 33-15	=	LAND SURVEY VOLUME 33, PAGE 15
LOT 19-12	=	LOT SURVEY VOLUME 19, PAGE 12
R.R. 8-29	=	ROAD RECORD VOLUME 8, PAGE 29
R/W	=	RIGHT OF WAY
CL	=	CENTERLINE
AC.	=	ACRES
TWP.	=	TOWNSHIP
TR.	=	TRACT
②	=	LOT CREATED BY RECORDER'S PLAT

LINE LEGEND		
	=	Blow-up Boundary
	=	Property Line
	=	Lot Split Line
	=	Section Line
	=	Centerline
	=	Right-of-Way Line
	=	Corporation Line

SURVEY INDEX		
NORTHEAST QUARTER		
LND. 3-105	LND. 11-102	LND. 22-113
LND. 3-465	LND. 12-23	REC. 2-167
LND. 4-41	LND. 12-65	REC. 5-78
LND. 4-289	LND. 12-124	REC. 7-18
LND. 5-176	LND. 13-10	REC. 7-50
LND. 6-44	LND. 13-173	REC. 7-30
LND. 6-89	LND. 14-105	REC. 10-19
LND. 7-79	LND. 15-192	REC. 10-34
LND. 7-199	LND. 17-24	REC. 10-68
LND. 7-188	LND. 20-33	REC. 10-121 THRU 1210
LND. 7-198	LND. 20-63	REC. 14-94
LND. 8-133	LND. 20-130	REC. 15-68
LND. 10-36	LND. 20-33	REC. 21-13
LND. 10-190	LND. 21-200	RD. REC. 8-41
SOUTHEAST QUARTER		
LND. 3-105	LND. 5-114	REC. 10-30
LND. 3-127	LND. 6-15	REC. 10-104
LND. 4-41	LND. 6-32	REC. 10-104
LND. 4-47	LND. 6-57	REC. 11-136
LND. 4-217	LND. 16-60	REC. 14-94
LND. 4-340	LND. 18-39	
LND. 4-380	LND. 18-139	
LND. 4-391	LND. 19-22	
LND. 4-392	LND. 19-84	
LND. 4-440	LND. 20-174	
LND. 5-27	LND. 21-149	
LND. 5-31	LND. 34-187	
LND. 5-38	LOT 2-15	
LND. 9-40		
SOUTHWEST QUARTER		
LND. 3-105	LND. 12-131	REC. 7-42
LND. 4-217	LND. 12-164	REC. 7-46
LND. 4-362	LND. 16-60	REC. 8-15
LND. 4-392	LND. 17-18	REC. 8-148
LND. 4-424	LND. 18-134	REC. 9-84
LND. 5-39	LND. 34-187	REC. 10-121
LND. 5-186	LND. 48-60	REC. 11-66
LND. 6-59	LND. 48-157	REC. 11-136
LND. 6-102	LND. 49-150	REC. 13-93
LND. 6-156	LND. 50-190	REC. 14-67
LND. 10-34		REC. 21-23
LND. 11-99		
LND. 12-74		
NORTHWEST QUARTER		
LND. 1-236	LND. 29-146	REC. 6-56
LND. 3-105	LND. 30-121	REC. 9-118
LND. 3-465	LND. 34-187	REC. 15-168
LND. 4-120	LND. 49-150	RS-66
LND. 4-122		
LND. 4-269		
LND. 4-367		
LND. 4-367		
LND. 4-398		
LND. 5-117		
LND. 10-34		
LND. 11-99		
LND. 17-117		
LND. 28-190		



PREPARED BY: MIAMI COUNTY ENGINEER'S MAP DEPARTMENT  
PAUL P. HUELSKAMP, P.E., P.S., COUNTY ENGINEER  
DATE: FEBRUARY 17, 2015 MB  
REVISED: FEBRUARY 17, 2015 MB