

# CONCORD TWP.

# MIAMI COUNTY, OHIO

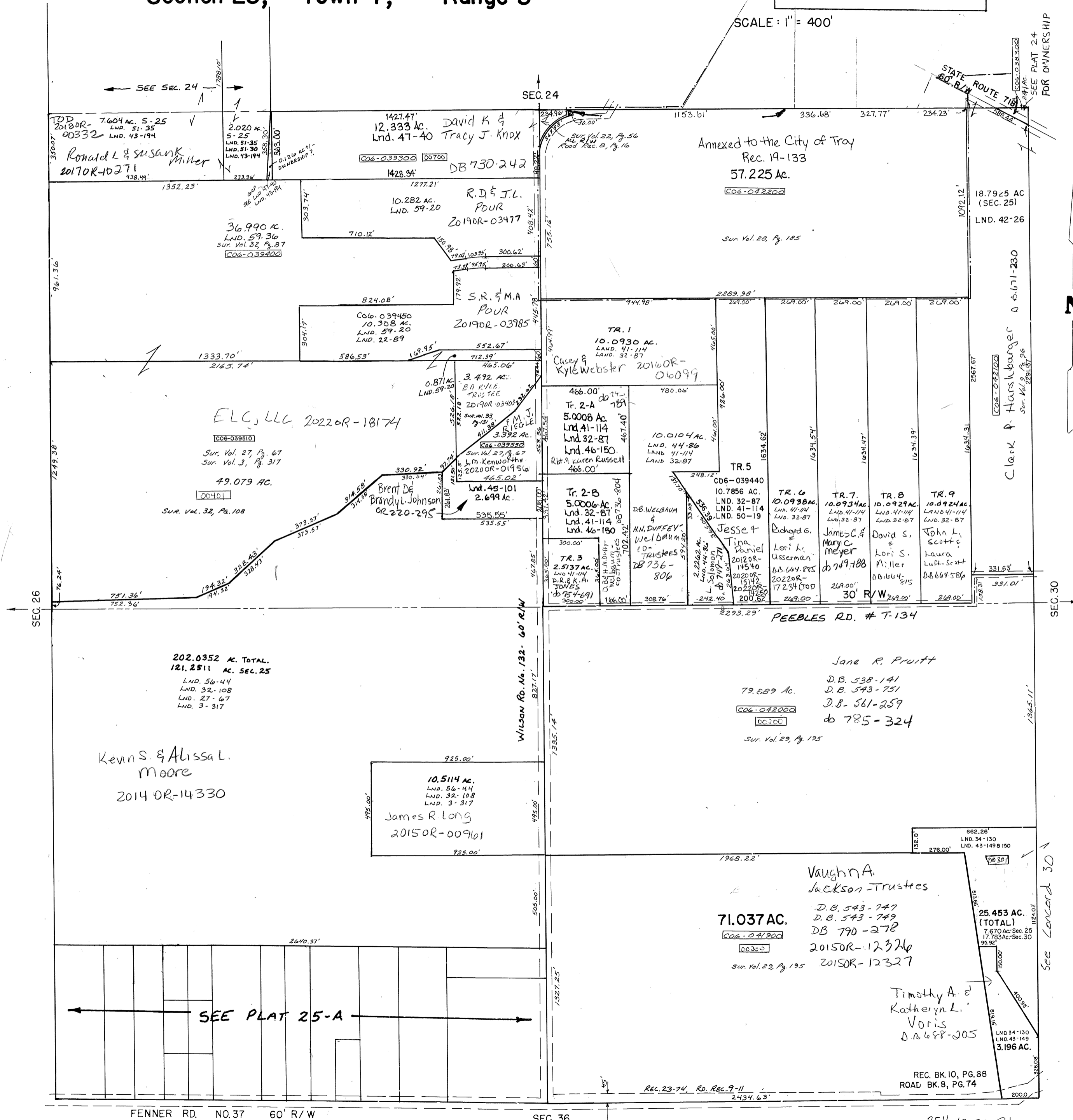
# PLAT 25

## Section 25, Town 7, Range 5

C06-\_\_\_\_\_

SCALE: 1" = 400'

SURVEYS		
S.E. QUARTER		
SUR. VOL. 29, PG. 195 34 130	REC. BK. 10, PG. 88 REC. 23-74	ROAD BK. 8, PG. 74 ROAD REC. 9-11
LND. 43-149 43-150		
N.E. QUARTER		
LOT BK. I, PG. 204		Rec. 19-133 (Annexed)
SUR. VOL. 3, PG. 317	SUR. VOL. 8, PG. 137	SUR. VOL. 9, PG. 96
SUR. VOL. 22, PG. 56	SUR. VOL. 28, PG. 185	SUR. VOL. 29, PG. 195
SUR. VOL. 32, PG. 87	SUR. VOL. 41, PG. 114	" 42, " 26
" 44, PG. 86	Lnd. 46-150	LND. 50-19
LND. 47-40		
S.W. QUARTER		
SUR. VOL. 3, PG. 317	SUR. VOL. 6, PG. 107	SUR. VOL. 6, PG. 103
SUR. VOL. 6, PG. 103	SUR. VOL. 8, PG. 61	SUR. VOL. 8, PG. 63
SUR. VOL. 10, PG. 192	SUR. VOL. 12, PG. 103	SUR. VOL. 19, PG. 103
SUR. VOL. 27, PG. 67	SUR. VOL. 32, PG. 60	SUR. VOL. 32, PG. 108
LND. 56-44		
N.W. QUARTER		
LND. 22-89		
SUR. VOL. 3, PG. 317	SUR. VOL. 27, PG. 67	SUR. VOL. 32, PG. 87
SUR. VOL. 32, PG. 108	SUR. VOL. 32, PG. 108	SUR. VOL. 33, PG. 131
LND. 43-194	Lnd. 45-101	Lnd. 47-40
LND. 51-35	LND. 56-44	LND. 59-20
LND. 59-36		



STATE ROUTE 718  
60' R/W  
SEE PLAT 24  
FOR OWNERSHIP

N

SEC. 30

See Concord 30