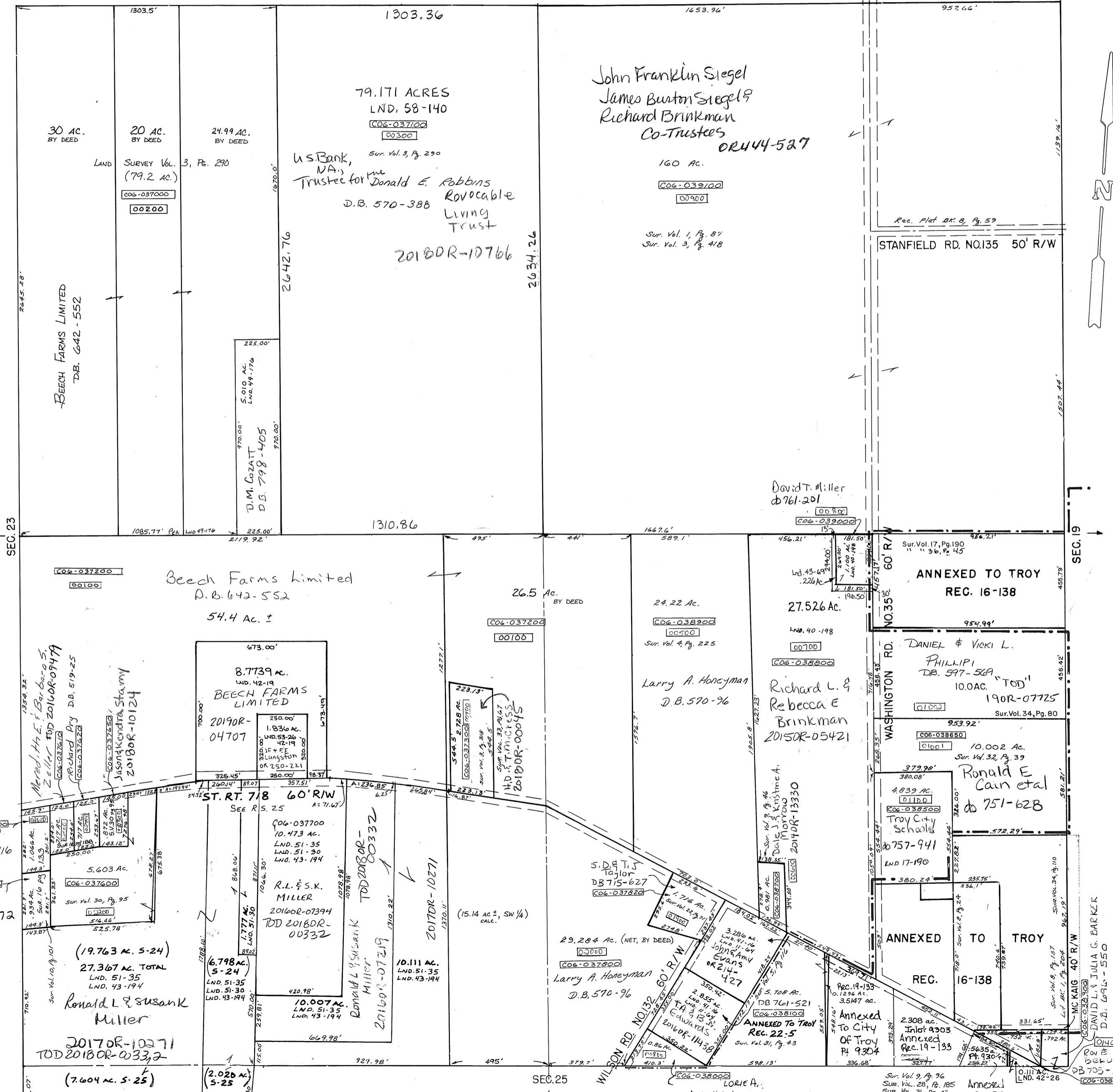


SMDA NUMBER
C06-CC024_

SURVEYS

| | |
|---|---|
| <p>SUR. VOL. 3, PG. 118 SUR. VOL. 4, PG. 225 SUR. VOL. 4, PG. 231 SUR. VOL. 5, PG. 116 SUR. VOL. 8, PG. 24 SUR. VOL. 8, PG. 137 SUR. VOL. 9, PG. 46 SUR. VOL. 9, PG. 96 SUR. VOL. 11, PG. 64 SUR. VOL. 17, PG. 190 SUR. VOL. 22, PG. 71 SUR. VOL. 28, PG. 185 SUR. VOL. 31, PG. 43 SUR. VOL. 32, PG. 39 SUR. VOL. 34, PG. 110 SUR. VOL. 36 P. 45 LAND. 40, PG. 198 LAND. SUR. 41 PG. 16 LND. 42-26 Lnd. 43-69</p> | <p>S.E. QUARTER LOT BK. 1, PG. 204 Rec. 16 - 138 - ANNEX Rec. 19 - 133 (Annexation) Rec. 22 - 5 ANNEX.</p> |
| <p>SUR. VOL. 1, PG. 87 SUR. VOL. 3, PG. 418</p> | <p>N.E. QUARTER REC. BK. 8, PG. 59</p> |
| <p>SUR. VOL. 3, PG. 318 SUR. VOL. 10, PG. 62 SUR. VOL. 10, PG. 101 SUR. VOL. 16, PG. 133 SUR. VOL. 16, PG. 188 SUR. VOL. 30, PG. 95 SUR. VOL. 33, PG. 67 LAND SUR. 42, PG. 19 LAND 43 - 194 LND. 51 - 30 LND. 51 - 35 LND. 52-26</p> | <p>S.W. QUARTER</p> |
| <p>SUR. VOL. 3, PG. 290 LND. VOL. 49 - 176 LND. 58-140</p> | <p>N.W. QUARTER</p> |



REVISED: JUNE 11, 2018 D. STUMPF

REV. 2-4-11
AGM