

CONCORD TWP.

MIAMI COUNTY, OHIO

PLAT 22-A

PART OF — Section 21, Town 5, Range 6

FRACTIONAL SEC. 21

PARCEL NUMBER
C06-CC022A- _____

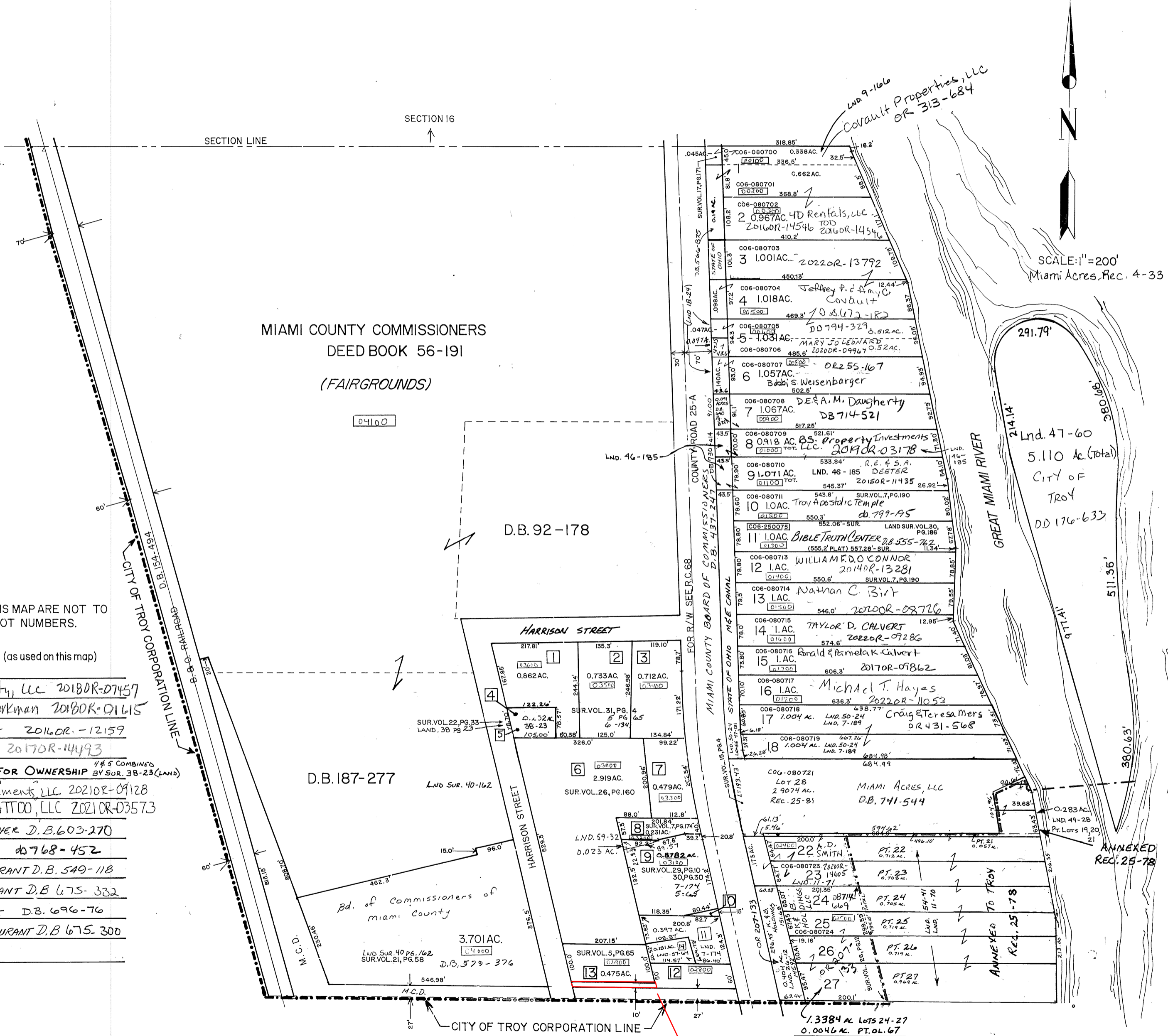
- Land Surveys Vol. 4, Pg. 192
- 5, 65 N.W. COR. 5-21
 - 5, 174 S. PT. 5-21
 - 5, 202 REC. 4-33
 - 6, 29 REC. 4-33
 - 6, 134 HARRISON ST.
 - 7, 11
 - 7, 67 N. PT. 5-21
 - 7, 174 S. PT. 5-21
 - 7, 189 LOT 17, 18 MIAMI AC.
 - 7, 190 REC. 4-33
 - 8, 7 REC. 5-15 WESTROOK S-1
 - 9, 135 OL 322 TROY
 - 9, 136 OL 320 TROY
 - 9, 166 PT LOT 1 MIAMI AC.
 - 9, 170 OL 323 TROY
 - 15, 4 CANAL LAND LOTS 19, 20, 21 MIAMI AC.
 - 17, 171 CANAL LAND LOT 1 MIAMI AC.
 - 18, 24 CANAL LAND LOTS 5, 6 MIAMI AC.
 - 21, 58 S. PT. 5-21 HARRISON ST.
 - 22, 33 HARRISON ST.
 - 26, 12 LOTS 24-27 MIAMI AC.
 - 26, 70 LOTS 21-27 MIAMI AC.
 - 26, 71 LOTS 21-23 MIAMI AC.
 - 26, 159 PT OL 436 TROY
 - 26, 160 HARRISON & Co RD 25-A
 - 29, 10 S. PT. Co RD 25-A
 - 30, 30 S. PT. Co RD 25-A
 - 30, 186 LOT 11 MIAMI AC.
 - 31, 4 HARRISON ST.
 - 38, 23 HARRISON ST.
 - 40, 162 S. PT. HARRISON ST.
 - 46, 185 Lot 8, 9 MIAMI AC.
 - 59, 32 PT. 9 0.023 AC.

ROAD REC. 8-82
REC. BK. 12, PG. 79
6, PG. 66

NOTE: MAP LOCATION NUMBERS ON THIS MAP ARE NOT TO BE USED OR CONSIDERED AS LOT NUMBERS.

MAP LOCATION NUMBERS ARE BOXED (as used on this map)

- 1 C06-025400 Bradlee Real Property, LLC 2018OR-07157
- 2 C06-025700 Richard A. & Michelle Workman 2018OR-01615
- 3 C06-025800 TROY APOSTOLIC TEMPLE 2016OR-12159
- 4 C06-025500 Jacobs Baits, LLC 2017OR-14493
- 5 COMBINED WITH C06-025500 SEE 4 FOR OWNERSHIP 44.5 COMBINED BY SUR. 38-23 (LAND)
- 6 C06-025950 Troy New Paris Investments, LLC 2021OR-09128
- 7 C06-025900 UNFILTERED INK TATTOO, LLC 2021OR-03573
- 8 C06-026000 David E. & Shawn L. Denoyer D.B. 603-270
- 9 C06-026100 Webster Leasing, LLC d0768-452
- 10 C06-026150 ERNASTINA L. BONDURANT D.B. 549-118
- 11 C06-026200 ERNASTINA L. BONDURANT D.B. 675-382
- 12 C06-025100 ERNASTINA L. BONDURANT D.B. 696-76
- 13 C06-026300 ERNASTINA L. BONDURANT D.B. 675-300
- 14



PENDING
COZATT SURVEY
9/27/22

REVISED: 7/20/22
82