

CONCORD TWP.

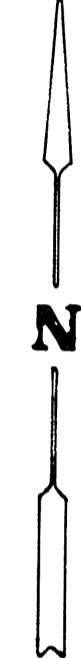
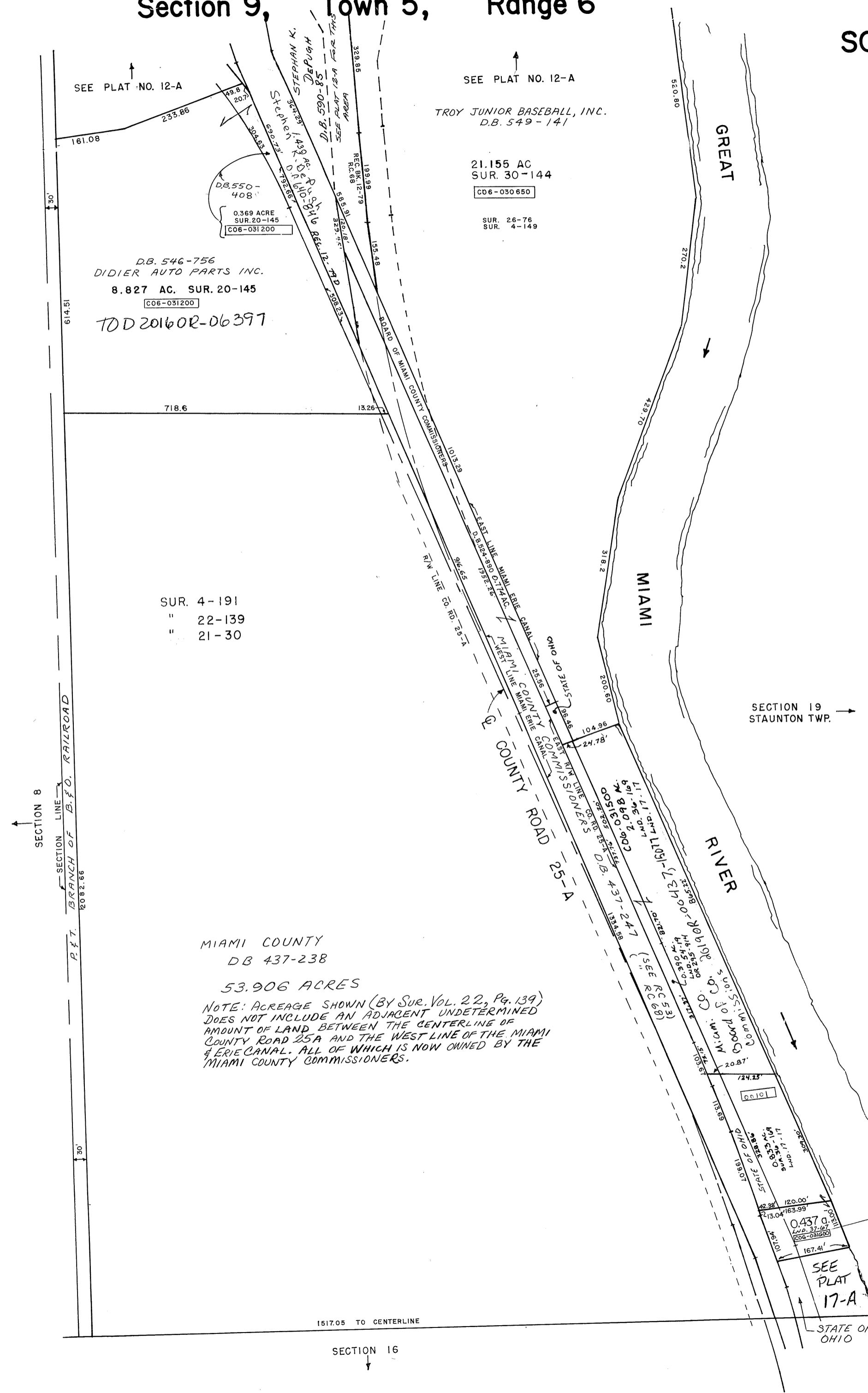
MIAMI COUNTY, OHIO

Section 9, Town 5, Range 6

PLAT 12-B

SOUTH HALF SEC. 9

SMDA NUMBER
 C06-CC012B-



SCALE : 1" = 200'

MIAMI COUNTY
 DB 437-238
 53.906 ACRES
 NOTE: ACREAGE SHOWN (BY SUR. VOL. 22, Pg. 139)
 DOES NOT INCLUDE AN ADJACENT UNDETERMINED
 AMOUNT OF LAND BETWEEN THE CENTERLINE OF
 COUNTY ROAD 25A AND THE WEST LINE OF THE MIAMI
 & ERIE CANAL. ALL OF WHICH IS NOW OWNED BY THE
 MIAMI COUNTY COMMISSIONERS.

Bonita L. Bishop
 D.B. 699-617
 LD. SUR. Vol. 37, Pg. 67

REVISED 9-28-2018
 D. VENTURA