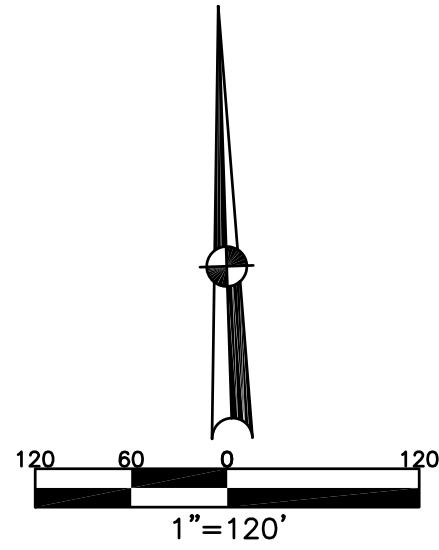


SECTION 24,25, TOWN 7, RANGE 5

CITY OF TROY
MIAMI COUNTY, OHIO

PLAT SW 210



STONEBRIDGE MEADOWS

SECTION 1
REC. 23-100, 100-A
LOTS 10355-10380

SECTION 2
REC. 24-96, 96-A
LOTS 10484-10498

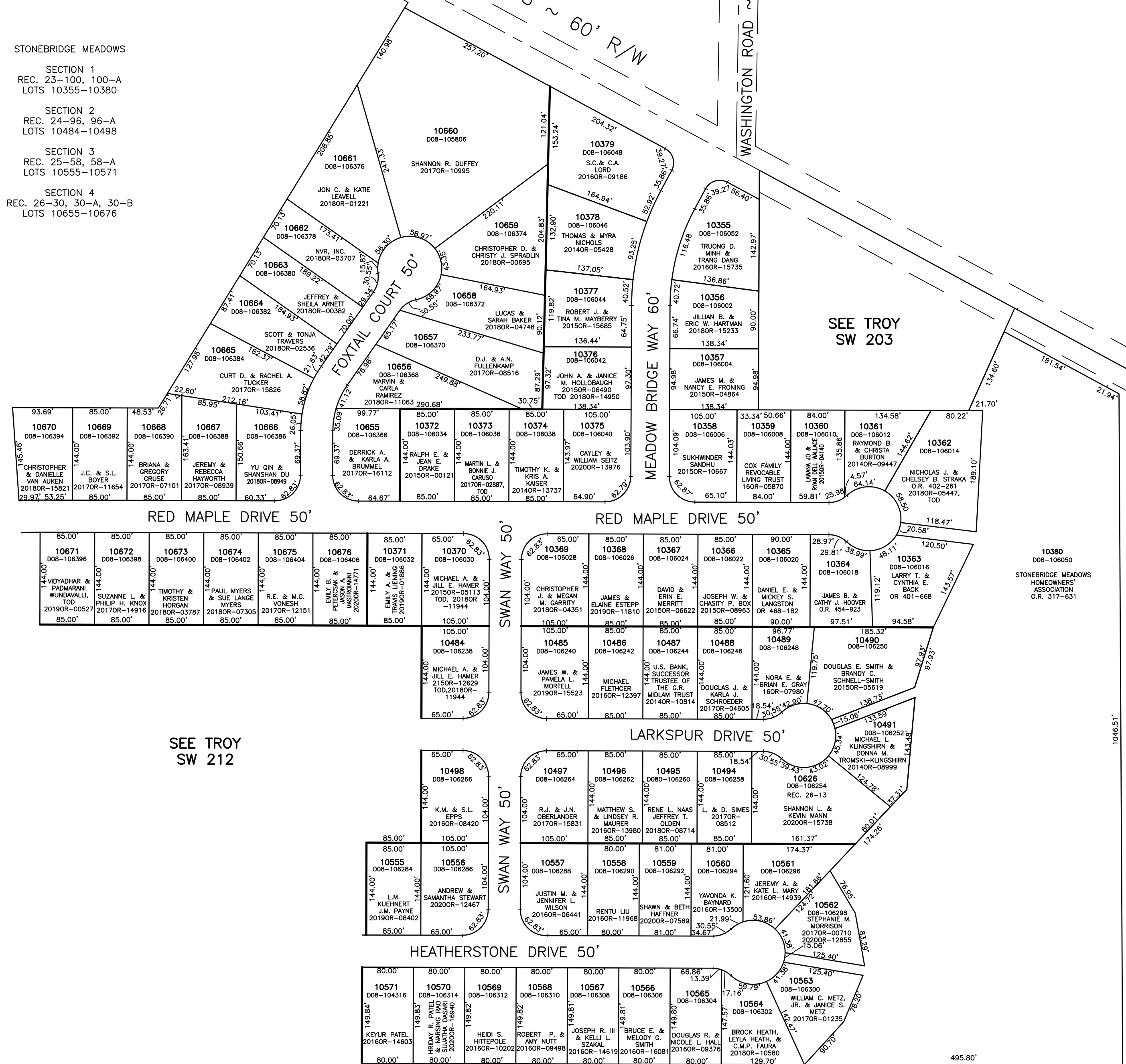
SECTION 3
REC. 25-58, 58-A
LOTS 10555-10571

SECTION 4
REC. 26-30, 30-A, 30-B
LOTS 10655-10676

ABBREVIATION LEGEND	
2014OR-07759	= RECORDER'S DOCUMENT NUMBER
OR 66-806	= OFFICIAL RECORD 66 PAGE 606
D.B. 613-172	= DEED BOOK 613, PAGE 172
REC. 15-72	= RECORDER'S PLAT BOOK 15, PAGE 72
LND. 33-15	= LAND SURVEY VOLUME 33, PAGE 15
LOT 19-12	= LOT SURVEY VOLUME 19, PAGE 12
R.R. 8-29	= ROAD RECORD VOLUME 8, PAGE 29
R/W	= RIGHT OF WAY
C	= CENTERLINE
AC.	= ACRES
TWP.	= TOWNSHIP
TR.	= TRACT
IL	= INLOT
D08-105272	= AUDITOR PARCEL ID NUMBER

LINE LEGEND	
	Blow-up Boundary
	Property Line
	Lot Split Line
	Section Line
	Centerline
	Right-of-Way Line
	Corporation Line

SURVEY INDEX	
LND. 22-56	REC. 19-133 (ANNEXATION)
LND. 28-185	REC. 23-100, 100-A
LND. 56-139	STONEBRIDGE MEADOWS, SEC. 1
	REC. 24-96, 96-A
	STONEBRIDGE MEADOWS, SEC. 2
	REC. 25-58, 58-A
	STONEBRIDGE MEADOWS, SEC. 3
	REC. 26-13
	REC. 26-30, 30-A, 30-B
	STONEBRIDGE MEADOWS, SEC. 4



SEE TROY SW 203

SEE TROY SW 212

PREPARED BY: MIAMI COUNTY ENGINEER'S MAP DEPARTMENT
PAUL P. HUELSKAMP, P.E., P.S., COUNTY ENGINEER
DATE: SEPTEMBER 6, 2012 DS
REVISED: November 13, 2020 CSHOUP