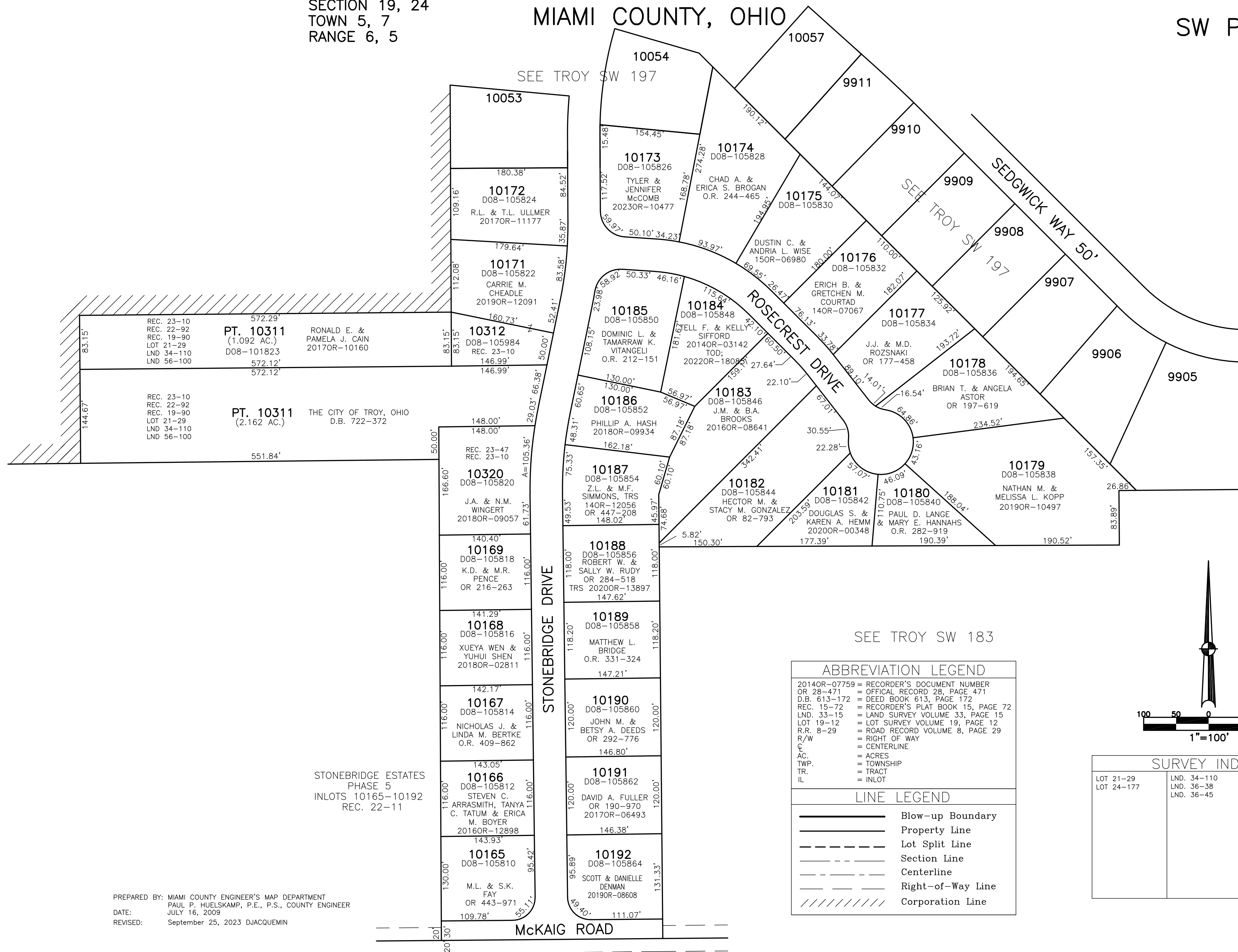


CITY OF TROY  
MIAMI COUNTY, OHIO

SECTION 19, 24  
TOWN 5, 7  
RANGE 6, 5

SW PLAT 209

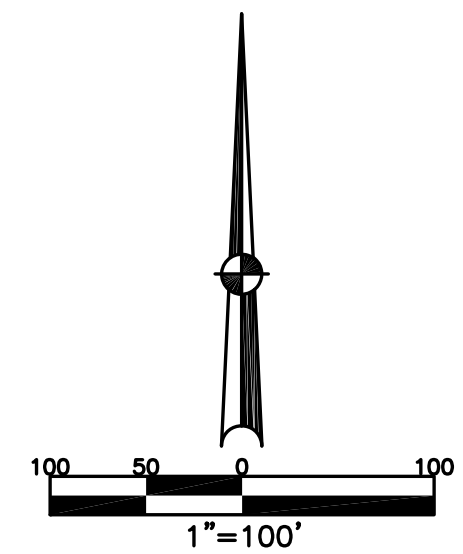


PREPARED BY: MIAMI COUNTY ENGINEER'S MAP DEPARTMENT  
PAUL P. HUELSKAMP, P.E., P.S., COUNTY ENGINEER  
DATE: JULY 16, 2009  
REVISED: September 25, 2023 DJACQUEMIN

ABBREVIATION LEGEND	
2014OR-07759	= RECORDER'S DOCUMENT NUMBER
OR 28-471	= OFFICAL RECORD 28, PAGE 471
D.B. 613-172	= DEED BOOK 613, PAGE 172
REC. 15-72	= RECORDER'S PLAT BOOK 15, PAGE 72
LND. 33-15	= LAND SURVEY VOLUME 33, PAGE 15
LOT 19-12	= LOT SURVEY VOLUME 19, PAGE 12
R.R. 8-29	= ROAD RECORD VOLUME 8, PAGE 29
R/W	= RIGHT OF WAY
C	= CENTERLINE
AC.	= ACRES
TWP.	= TOWNSHIP
TR.	= TRACT
IL	= INLOT

LINE LEGEND	
	Blow-up Boundary
	Property Line
	Lot Split Line
	Section Line
	Centerline
	Right-of-Way Line
	Corporation Line



SURVEY INDEX		
LOT 21-29	LND. 34-110	REC. 16-138
LOT 24-177	LND. 36-38	ANNEXATION
	LND. 36-45	REC. 17-2
		REC. 19-90
		REC. 22-11
		REC. 22-92
		REC. 23-10
		REC. 23-47