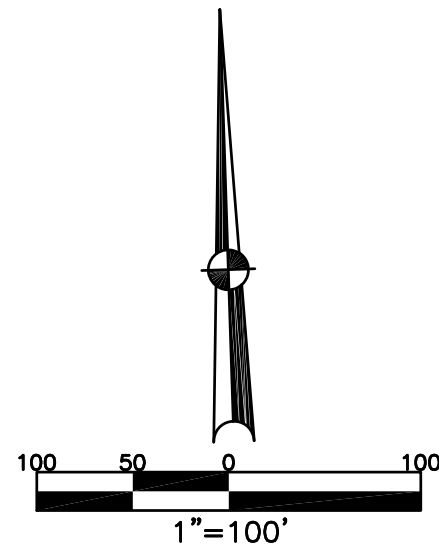


SECTION 31, TOWN 5, RANGE 6
SECTION 36, TOWN 7, RANGE 5

CITY OF TROY
MIAMI COUNTY, OHIO

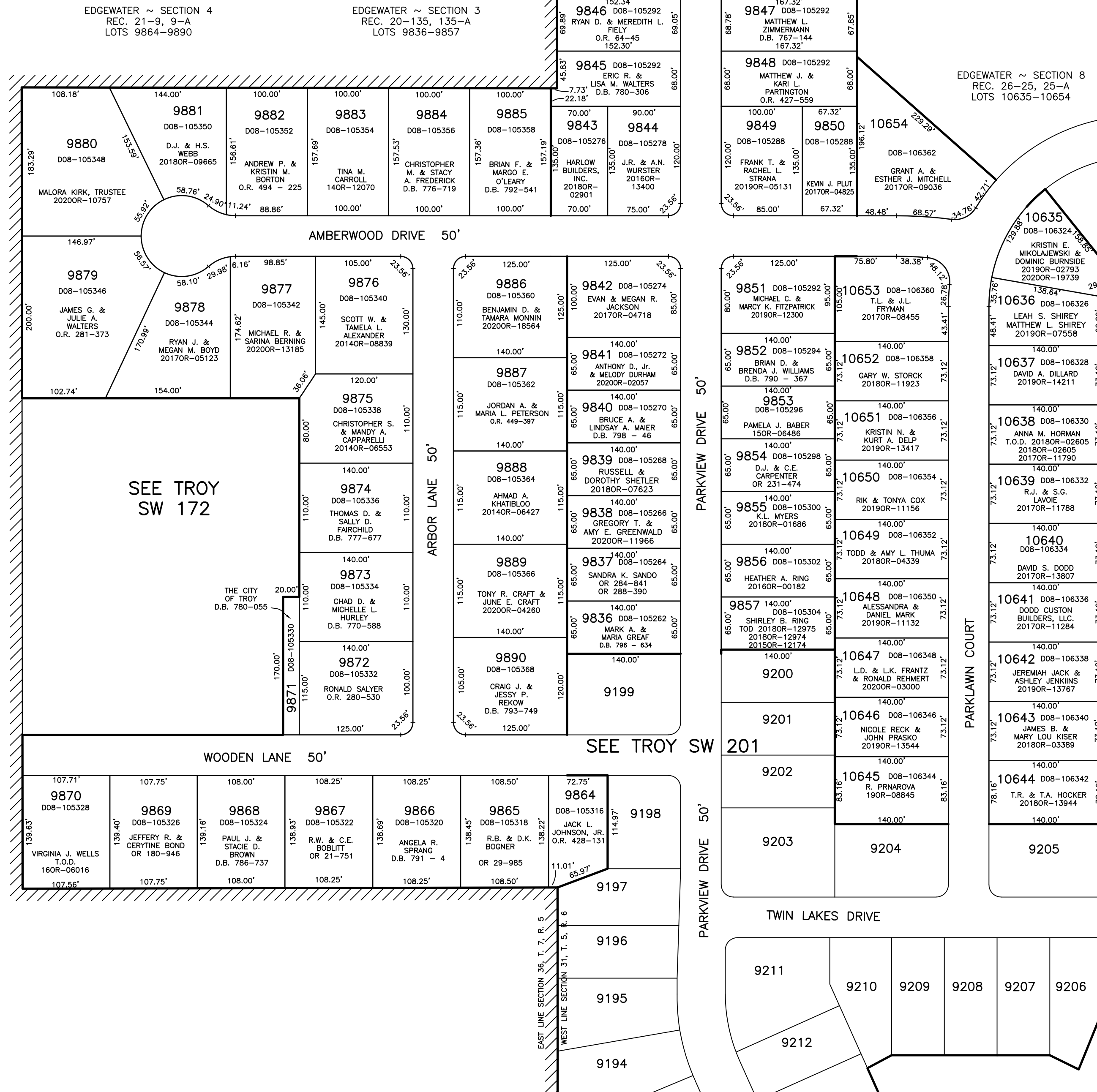
PLAT SW 208



ABBREVIATION LEGEND	
2014OR-07759	= RECORDER'S DOCUMENT NUMBER
OR 66-606	= OFFICIAL RECORD 66 PAGE 606
D.B. 613-172	= DEED BOOK 613, PAGE 172
REC. 15-72	= RECORDER'S PLAT BOOK 15, PAGE 72
LND. 33-15	= LAND SURVEY VOLUME 33, PAGE 15
LOT 19-12	= LOT SURVEY VOLUME 19, PAGE 12
R.R. 8-29	= ROAD RECORD VOLUME 8, PAGE 29
R/W	= RIGHT OF WAY
CL	= CENTERLINE
AC.	= ACRES
TWP.	= TOWNSHIP
TR.	= TRACT
IL	= INLOT
D08-105272	= AUDITOR PARCEL ID NUMBER

LINE LEGEND	
	Blow-up Boundary
	Property Line
	Lot Split Line
	Section Line
	Centerline
	Right-of-Way Line
	Corporation Line

SURVEY INDEX		
LND. 32-72		REC. 14-68 (ANNEXATION)
		REC. 20-135,135A EDGEWATER~SEC. 3
		REC. 21-9,9A EDGEWATER~SEC. 4
		REC. 26-25,25A EDGEWATER~SEC. 8



PREPARED BY: MIAMI COUNTY ENGINEER'S MAP DEPARTMENT
PAUL P. HUELSKAMP, P.E., P.S., COUNTY ENGINEER
DATE: OCTOBER 7, 2005

REVISED: January 4, 2021 IGRIFIN