

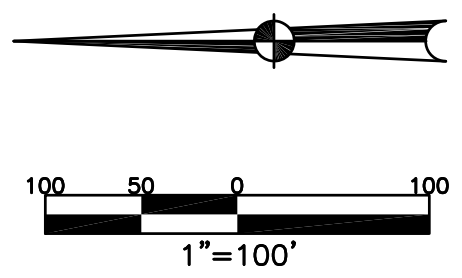
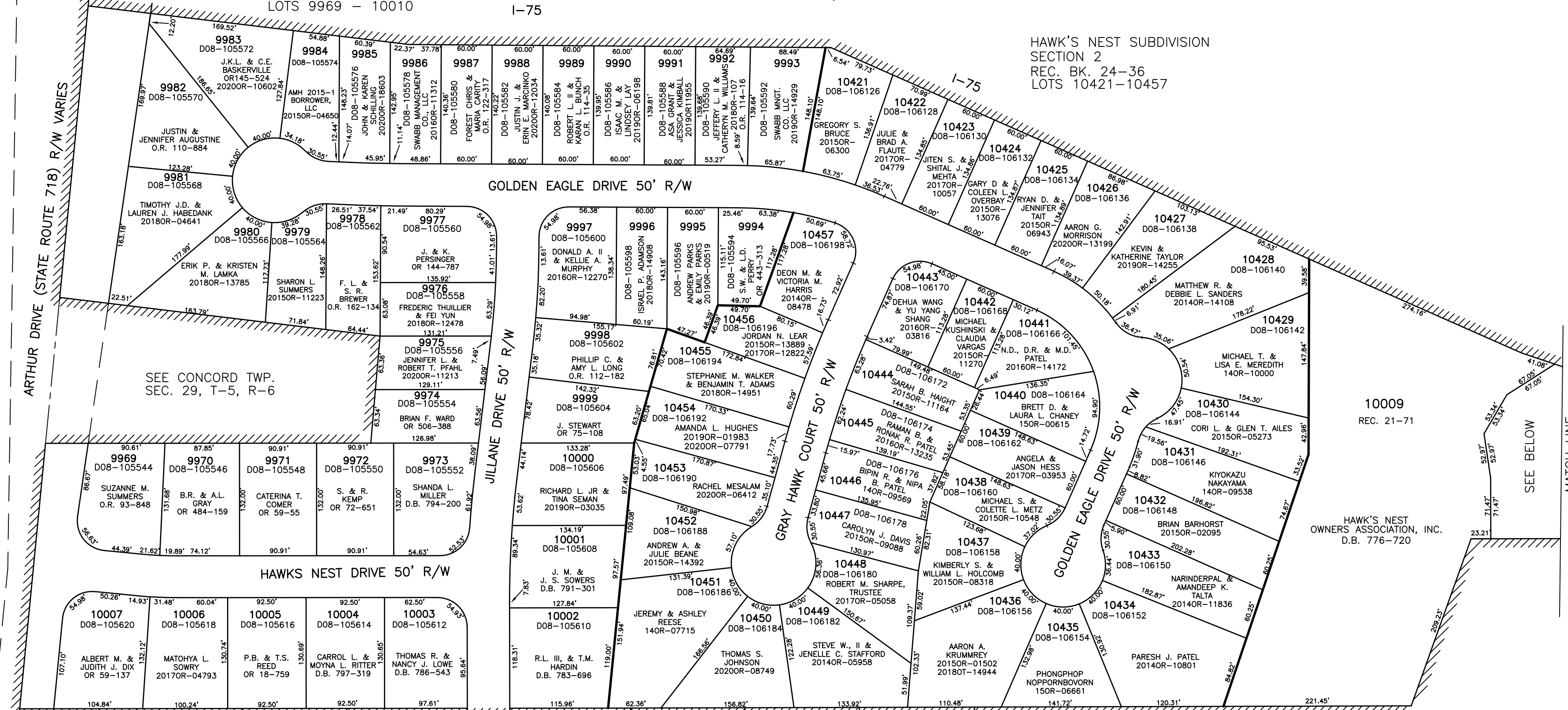
SECTION 29

TOWN 5
RANGE 6

HAWK'S NEST SUBDIVISION
SECTION 1
REC. BK. 21-71
LOTS 9969 - 10010

CITY OF TROY
MIAMI COUNTY, OHIO

PLAT SW 207



ABBREVIATION	LEGEND	LINE LEGEND	SURVEY INDEX
2014OR-07759	= RECORDER'S DOCUMENT NUMBER		HAWK'S NEST SUBDIVISION
OR 66-972	= OFFICIAL RECORD 66 PAGE 972		SECTION 1
D.B. 613-172	= DEED BOOK 613, PAGE 172		REC. BK. 21-71
REC. 15-72	= RECORDER'S PLAT BOOK 15, PAGE 72		LOTS 9969 - 10010
LND. 33-15	= LAND SURVEY VOLUME 33, PAGE 15		HAWK'S NEST SUBDIVISION
LOT 19-12	= LOT SURVEY VOLUME 19, PAGE 12		SECTION 2
R.R. 8-29	= ROAD RECORD VOLUME 8, PAGE 29		REC. BK. 24-36
R/W	= RIGHT OF WAY		LOTS 10421-10457
C	= CENTERLINE		ANNEX - LOT 9895
AC.	= ACRES		LND. 4-217
TWP.	= TOWNSHIP		LND. 48-60
TR.	= TRACT		LND. 48-157
IL	= INLOT		LOT 23-167
			LND. 16-60

PREPARED BY: MIAMI COUNTY ENGINEER'S MAP DEPARTMENT
PAUL P. HUELSKAMP, P.E., P.S., COUNTY ENGINEER
DATE: JUNE 26, 2007
REVISED: December 11, 2020 IGRIFIN

HAWK'S NEST SUBDIVISION
SECTION 2
REC. BK. 24-36
LOTS 10421-10457

10010
REC. 21-71
KENNETH & CARLENE LEE
2018OR-08777

EDGEWOOD DRIVE T-37A 60'R/W
RES. 15-03-332