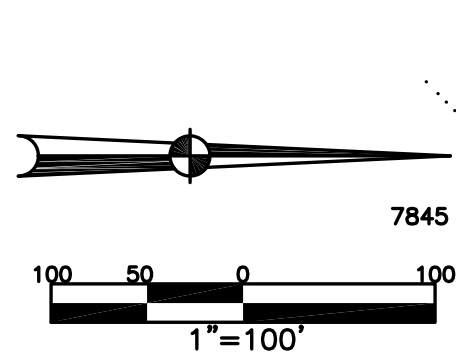


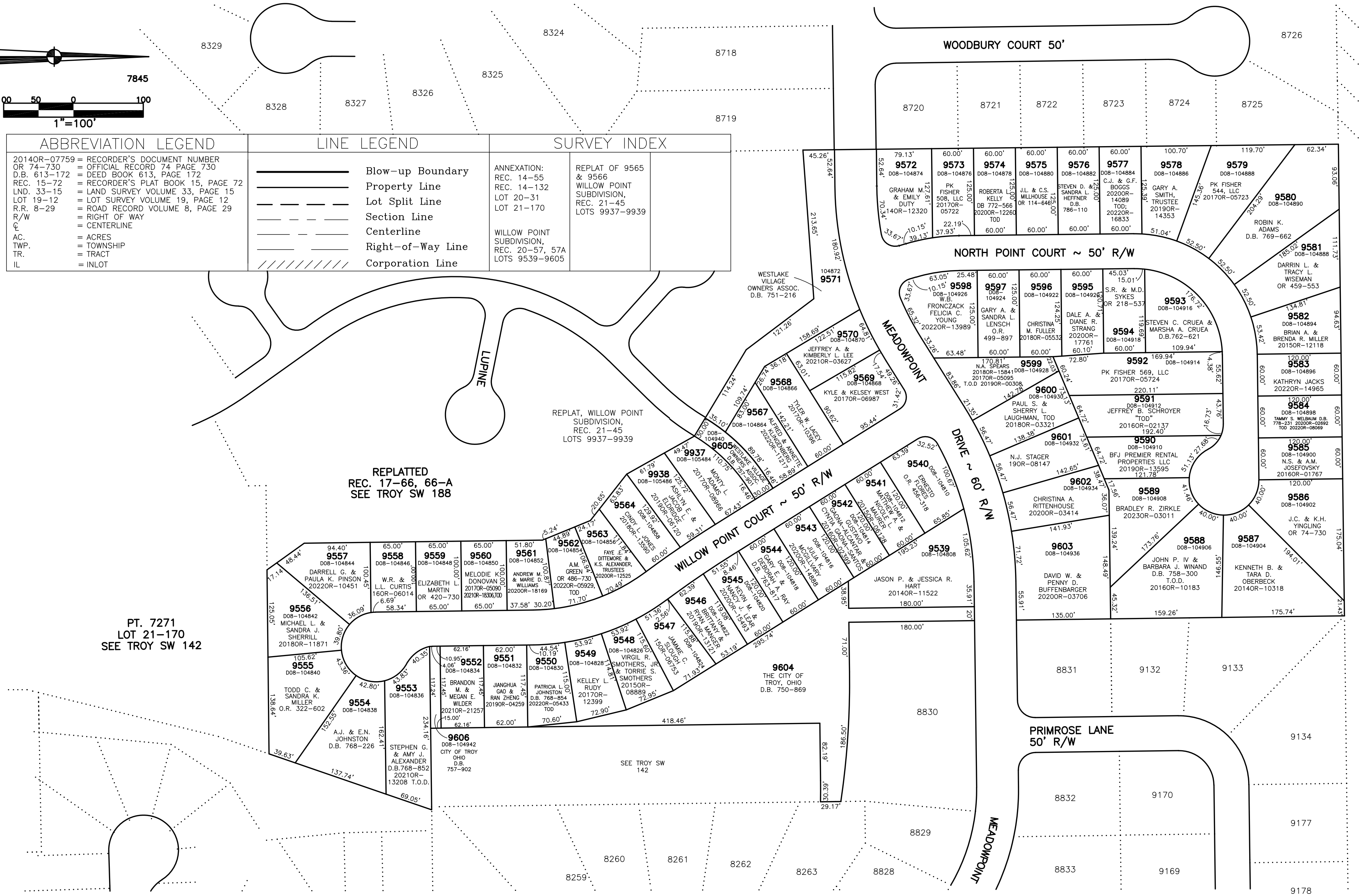
CITY OF TROY MIAMI COUNTY, OHIO

PARCEL NUMBER
D08-_____

PLAT SW 206



ABBREVIATION LEGEND	LINE LEGEND	SURVEY INDEX
2014OR-07759 = RECORDER'S DOCUMENT NUMBER OR 74-730 = OFFICIAL RECORD 74 PAGE 730 D.B. 613-172 = DEED BOOK 613, PAGE 172 REC. 15-72 = RECORDER'S PLAT BOOK 15, PAGE 72 LND. 33-15 = LAND SURVEY VOLUME 33, PAGE 15 LOT 19-12 = LOT SURVEY VOLUME 19, PAGE 12 R.R. 8-29 = ROAD RECORD VOLUME 8, PAGE 29 R/W = RIGHT OF WAY C = CENTERLINE AC. = ACRES TWP. = TOWNSHIP TR. = TRACT IL = INLOT	<p>Blow-up Boundary</p> <p>Property Line</p> <p>Lot Split Line</p> <p>Section Line</p> <p>Centerline</p> <p>Right-of-Way Line</p> <p>Corporation Line</p>	<p>ANNEXATION: REC. 14-55 REC. 14-132 LOT 20-31 LOT 21-170</p> <p>REPLAT OF 9565 & 9566 WILLOW POINT SUBDIVISION, REC. 21-45 LOTS 9937-9939</p> <p>WILLOW POINT SUBDIVISION, REC. 20-57, 57A LOTS 9539-9605</p>



PREPARED BY: MIAMI COUNTY ENGINEER'S MAP DEPARTMENT
PAUL P. HULSKAMP, P.E., P.S., COUNTY ENGINEER
DATE: SEPTEMBER 17, 2003
REVISED: September 1, 2023 DJACQUEMIN