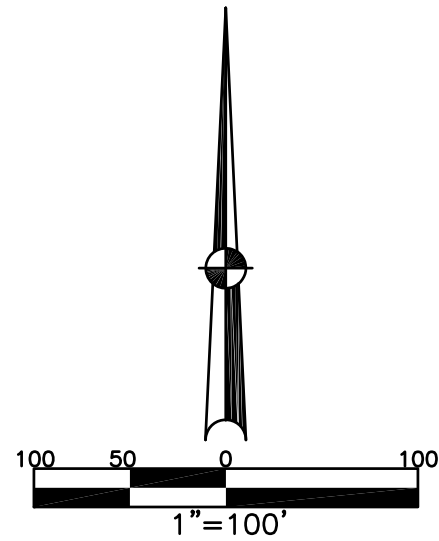


SECTION 31
TOWN 5
RANGE 6

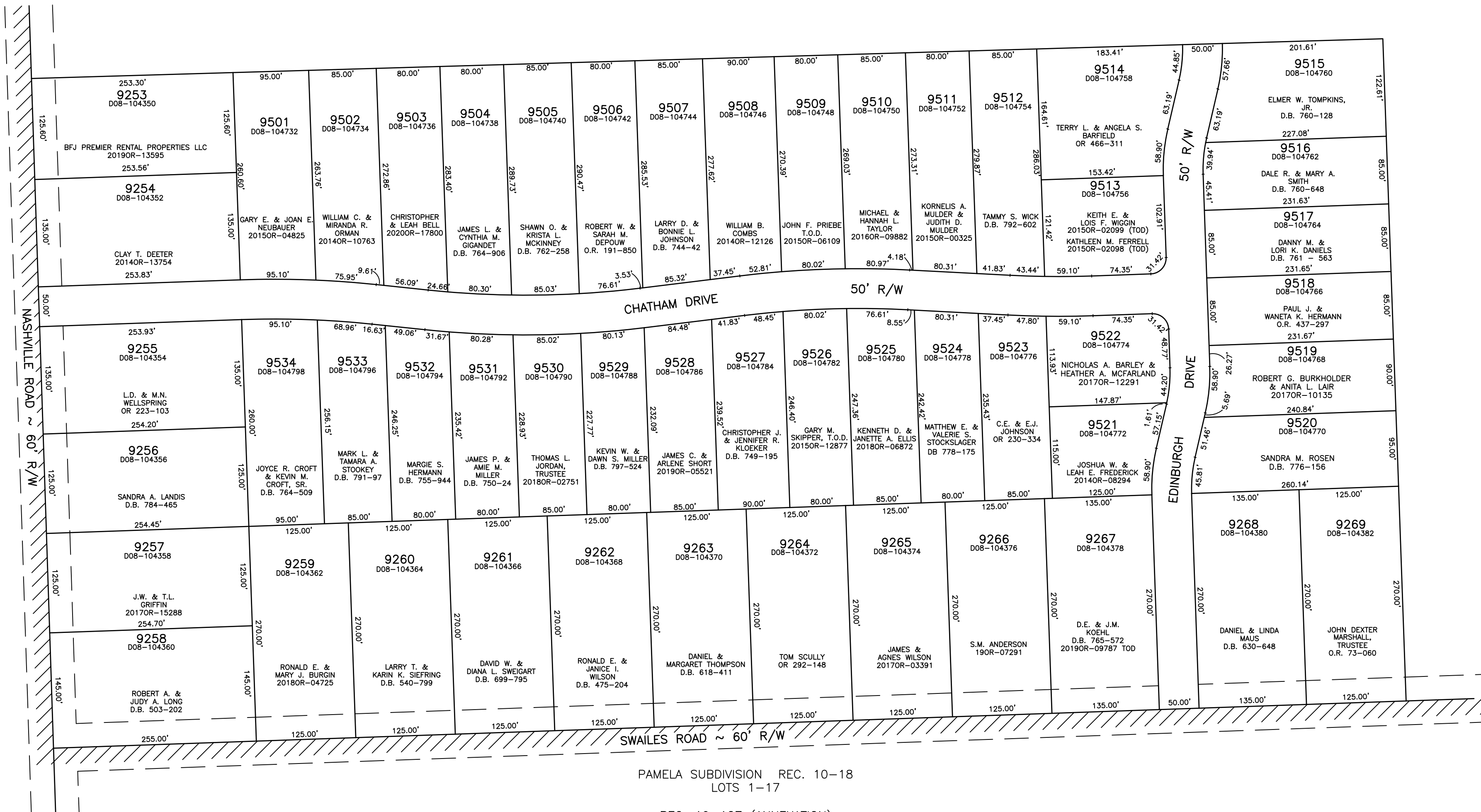
CITY OF TROY
MIAMI COUNTY, OHIO

PLAT SW 202



ABBREVIATION	LEGEND	LINE LEGEND	SURVEY INDEX
2014OR-07759	= RECORDER'S DOCUMENT NUMBER		Blow-up Boundary
O.R. 71-355	= OFFICIAL RECORD 71 PAGE 355		Property Line
D.B. 613-172	= DEED BOOK 613, PAGE 172		Lot Split Line
REC. 15-72	= RECORDER'S PLAT BOOK 15, PAGE 72		Section Line
LND. 33-15	= LAND SURVEY VOLUME 33, PAGE 15		Centerline
LOT 19-12	= LOT SURVEY VOLUME 19, PAGE 12		Right-of-Way Line
R.R. 8-29	= ROAD RECORD VOLUME 8, PAGE 29		Corporation Line
R/W	= RIGHT OF WAY		
CL	= CENTERLINE		
AC.	= ACRES		
TWP.	= TOWNSHIP		
TR.	= TRACT		
IL	= INLOT		

PAMELA ESTATES SECTION TWO
REC. 20-48A, 48B, 48C
LOTS 9501-9534



PAMELA SUBDIVISION REC. 10-18
LOTS 1-17

REC. 19-127 (ANNEXATION)
LOTS 9253-9269

PREPARED BY: MIAMI COUNTY ENGINEER'S MAP DEPARTMENT
PAUL P. HUELSKAMP, P.E., P.S., COUNTY ENGINEER
DATE: JUNE 22, 2003
REVISED: December 1, 2020 IGRIFFIN