

SECTION 31

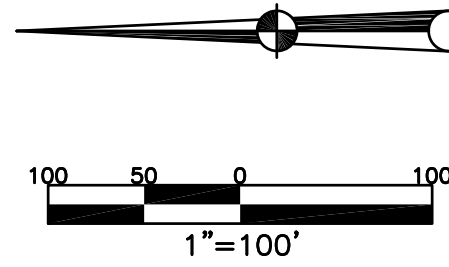
TOWN 5

RANGE 6

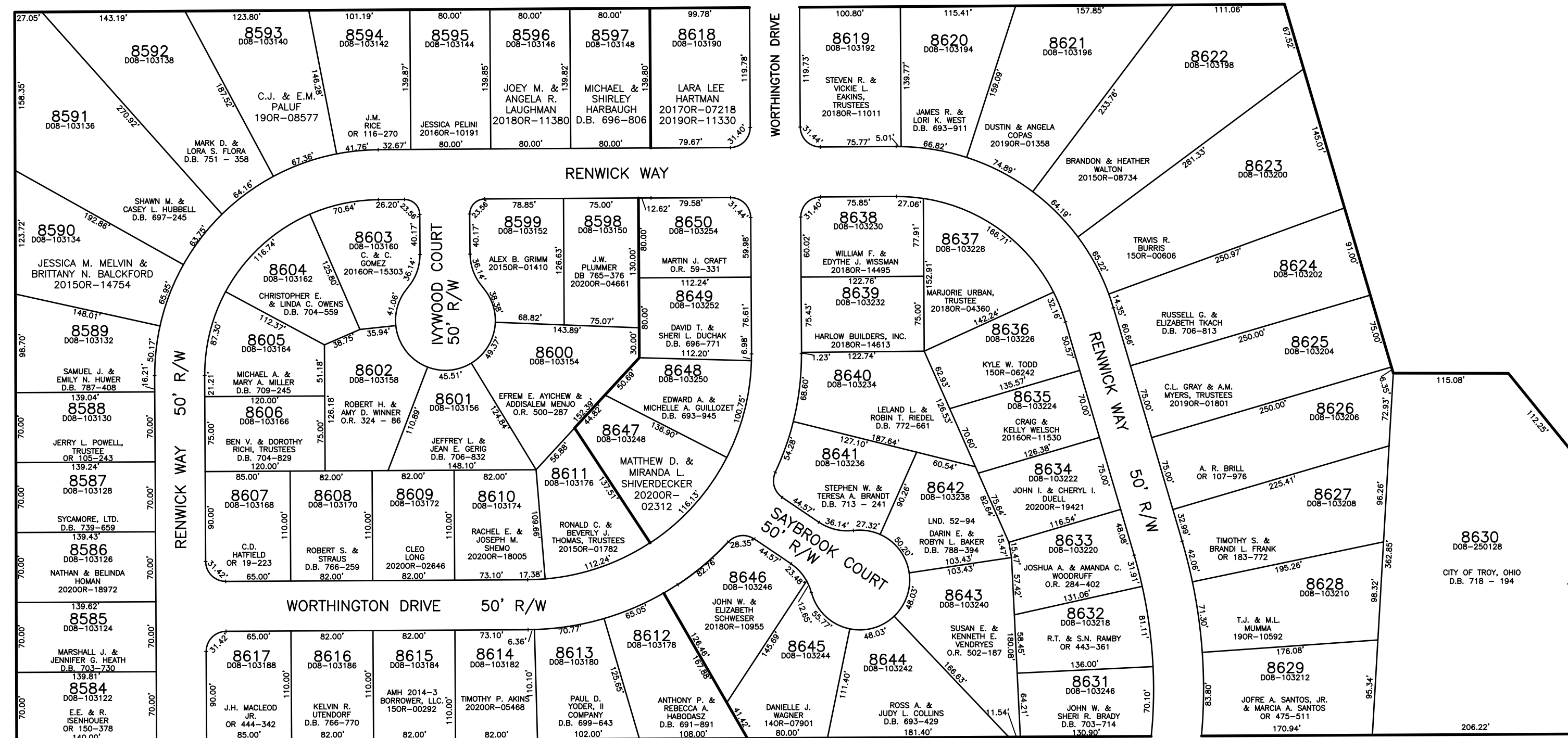
# CITY OF TROY MIAMI COUNTY, OHIO

PARCEL ID NUMBER  
DOB-\_\_\_\_\_

PLAT SW 195



ABBREVIATION LEGEND	LINE LEGEND	SURVEY INDEX
2014OR-07759 = RECORDER'S DOCUMENT NUMBER OR 73-347 = OFFICIAL RECORD 73 PAGE 347 D.B. 613-172 = DEED BOOK 613, PAGE 172 REC. 15-72 = RECORDER'S PLAT BOOK 15, PAGE 72 LND. 33-15 = LAND SURVEY VOLUME 33, PAGE 15 LOT 19-12 = LOT SURVEY VOLUME 19, PAGE 12 R.R. 8-29 = ROAD RECORD VOLUME 8, PAGE 29 R/W = RIGHT OF WAY C. = CENTERLINE AC. = ACRES TWP. = TOWNSHIP TR. = TRACT IL = INLOT	Blow-up Boundary Property Line Lot Split Line Section Line Centerline Right-of-Way Line Corporation Line	KENSINGTON SECTION 3 REC. 18-64, 64A LOTS 8584-8617  KENSINGTON SECTION 4 REC. 18-65, 65A LOTS 8618-8650



WEST MARKET STREET  
(STATE ROUTE 55)

SEE TROW194 FOR THIS AREA

PREPARED BY: MIAMI COUNTY ENGINEER'S MAP DEPARTMENT  
 PAUL P. HUELSKAMP, P.E., P.S., COUNTY ENGINEER  
 DATE: JANUARY 5, 1999  
 REVISED: December 30, 2020 CSHOUP