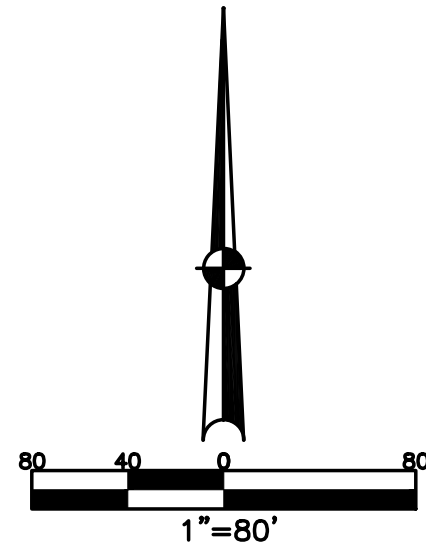


SECTION 19
TOWN 5
RANGE 6

CITY OF TROY
MIAMI COUNTY, OHIO

PARCEL ID NUMBER
D08-_____

PLAT SW 188

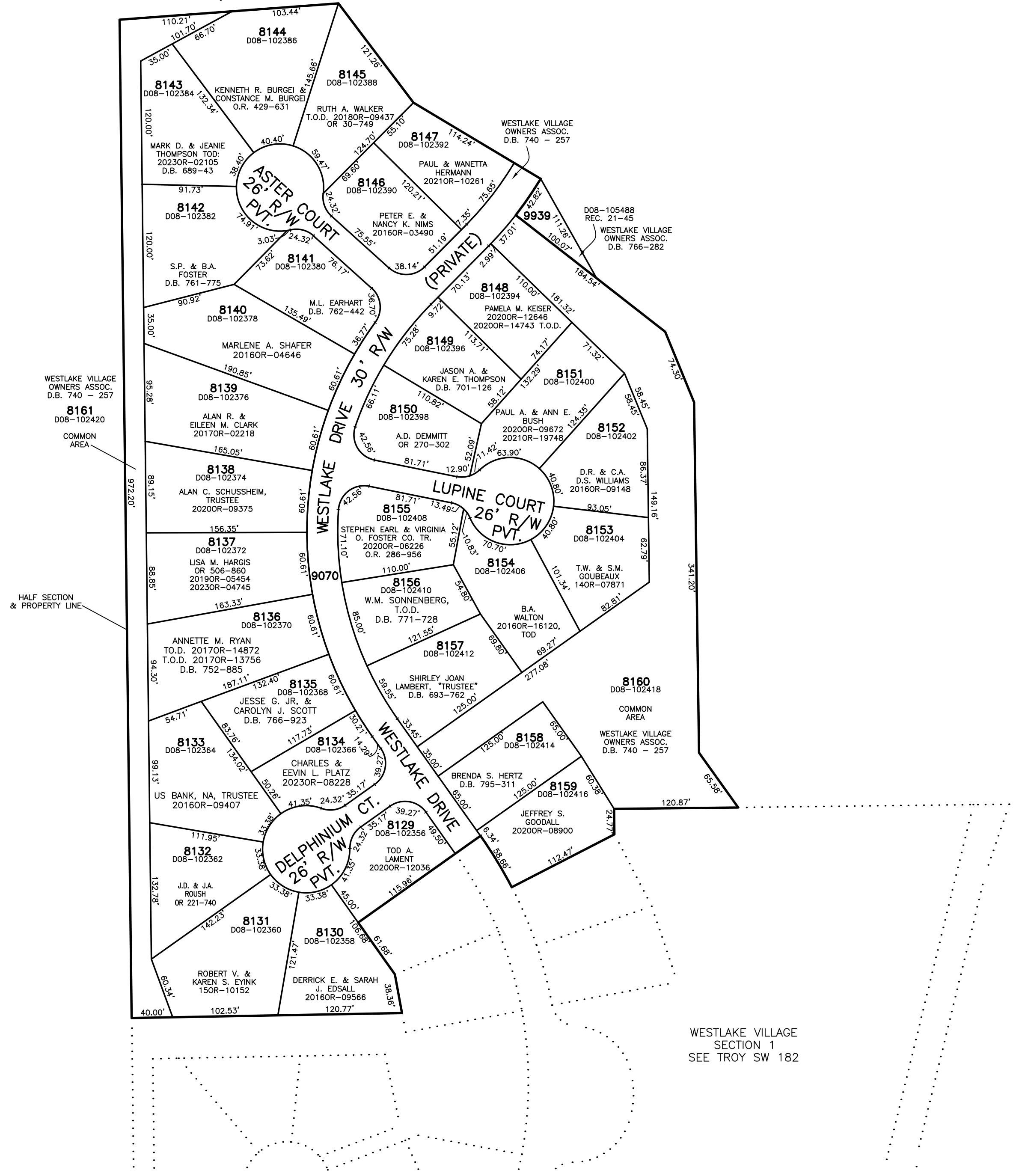


ABBREVIATION LEGEND	
2014OR-07759	= RECORDER'S DOCUMENT NUMBER
OR 69-648	= OFFICIAL RECORD 69 PAGE 648
D.B. 613-172	= DEED BOOK 613, PAGE 172
REC. 15-72	= RECORDER'S PLAT BOOK 15, PAGE 72
LND. 33-15	= LAND SURVEY VOLUME 33, PAGE 15
LOT 19-12	= LOT SURVEY VOLUME 19, PAGE 12
R.R. 8-29	= ROAD RECORD VOLUME 8, PAGE 29
R/W	= RIGHT OF WAY
C	= CENTERLINE
AC.	= ACRES
TWP.	= TOWNSHIP
TR.	= TRACT
IL	= INLOT

LINE LEGEND	
	Blow-up Boundary
	Property Line
	Lot Split Line
	Section Line
	Centerline
	Right-of-Way Line
	Corporation Line

SURVEY INDEX	
LOT 21-36	REC. 14-55 ANNEXED REC. 17-66, 66-A REC. 21-45

REC. 14-55 ANNEXED
WESTLAKE VILLAGE
SECTION 2
REC. 17-66, 66-A
(LOTS 8129-8161)
REPLAT OF 9565 & 9566
WILLOW POINT SUBD.
REC. 21-45
(LOT 9939)



WESTLAKE VILLAGE
SECTION 1
SEE TROY SW 182