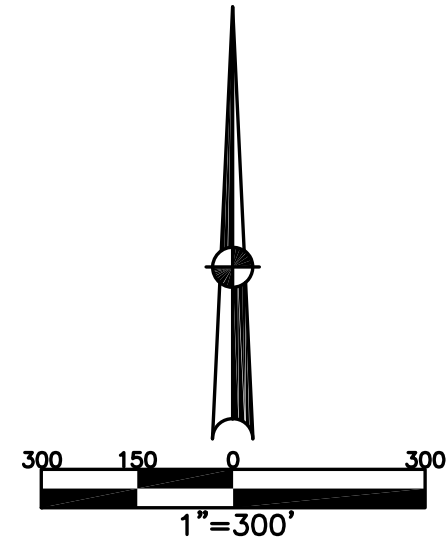


SECTION 19, 24
 TOWN 5, 7
 RANGE 6, 5

CITY OF TROY
 MIAMI COUNTY, OHIO

PARCEL ID NUMBER
 D08-_____

PLAT SW 183

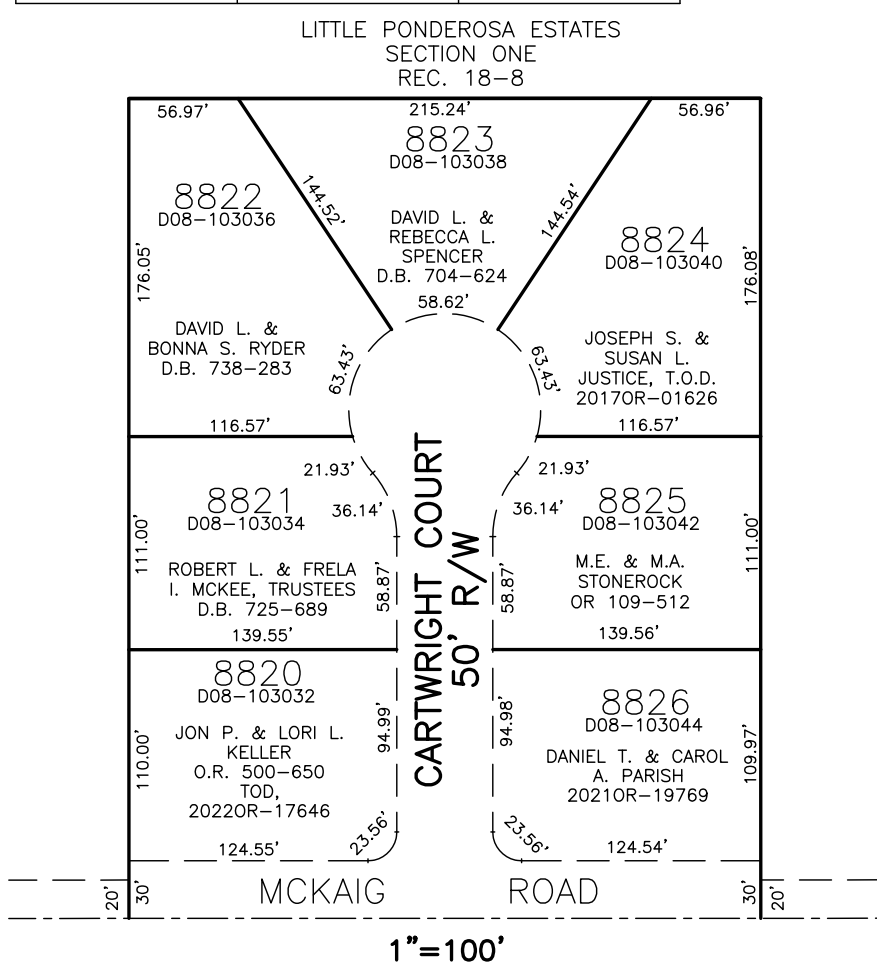
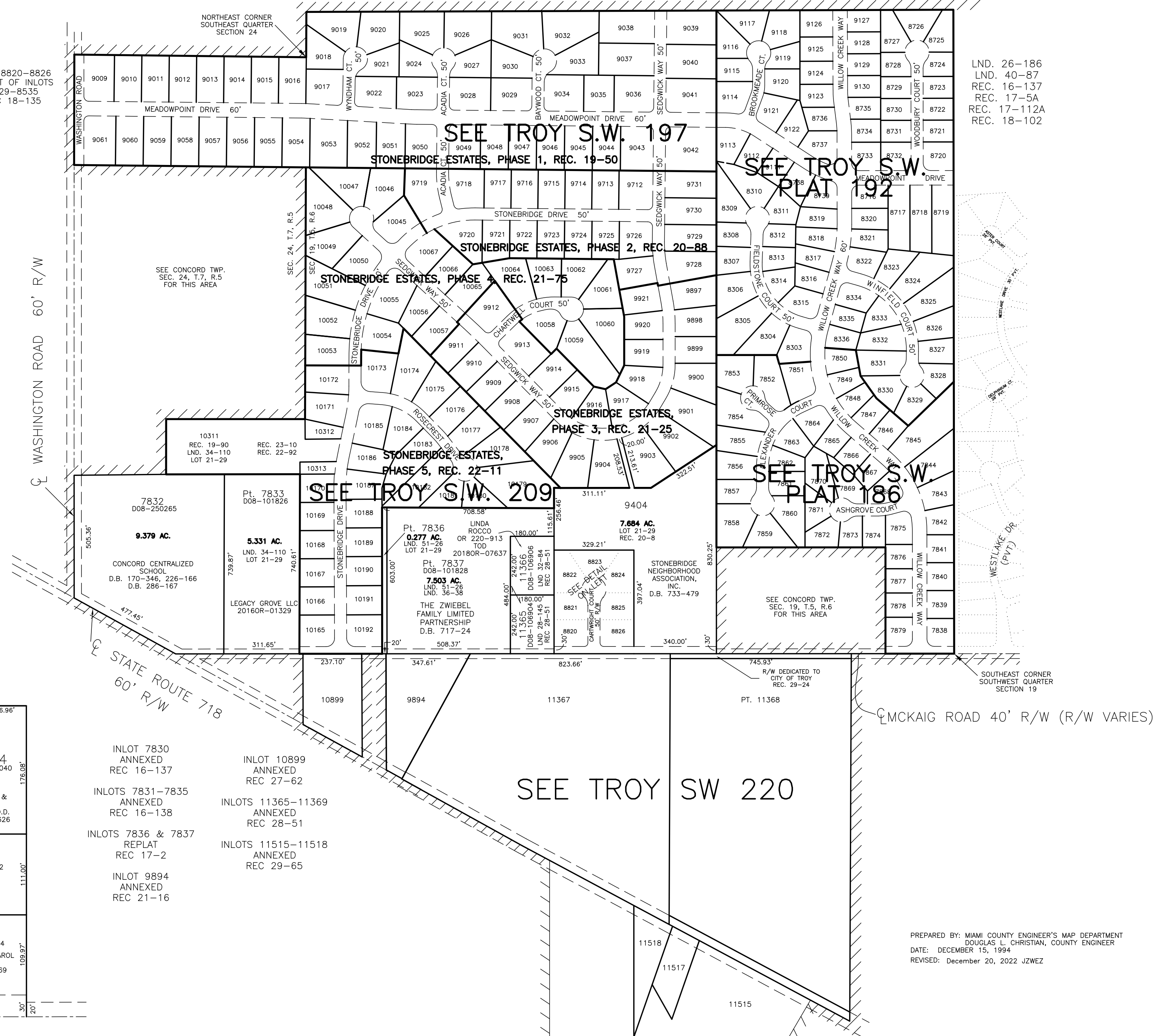


LOTS 8820-8826
 REPLAT OF INLOTS
 8529-8535
 REC 18-135

ABBREVIATION LEGEND	
2014OR-07759	= RECORDER'S DOCUMENT NUMBER
OR 28-471	= OFFICIAL RECORD 28, PAGE 471
D.B. 613-172	= DEED BOOK 613, PAGE 172
REC. 15-72	= RECORDER'S PLAT BOOK 15, PAGE 72
LND. 33-15	= LAND SURVEY VOLUME 33, PAGE 15
LOT 19-12	= LOT SURVEY VOLUME 19, PAGE 12
R.R. 8-29	= ROAD RECORD VOLUME 8, PAGE 29
R/W	= RIGHT OF WAY
C	= CENTERLINE
AC.	= ACRES
TWP.	= TOWNSHIP
TR.	= TRACT
IL	= INLOT

LINE LEGEND	
	Blow-up Boundary
	Property Line
	Lot Split Line
	Section Line
	Centerline
	Right-of-Way Line
	Corporation Line

SURVEY INDEX		
REC 16-137	LOT 21-29	LND. 5-106
REC 16-138	LOT 24-177	LND. 8-24
REC 17-2		LND. 8-137
REC 17-5A		LND. 17-190
REC 17-112A		LND. 26-186
REC 18-8		LND. 34-110
REC 18-135		LND. 36-38
REC 18-102		LND. 36-45
REC 19-50		LND. 40-87
REC 19-89		LND. 51-26
REC 19-90		
REC 20-88		
REC 21-16		
REC 21-25		
REC 22-11		
REC 22-92		
REC 23-10		
REC 27-62		
REC 28-51		
REC 29-24		
REC 29-65		



INLOT 7830 ANNEXED REC 16-137

INLOTS 7831-7835 ANNEXED REC 16-138

INLOTS 7836 & 7837 REPLAT REC 17-2

INLOT 9894 ANNEXED REC 21-16

INLOT 10899 ANNEXED REC 27-62

INLOTS 11365-11369 ANNEXED REC 28-51

INLOTS 11515-11518 ANNEXED REC 29-65

PREPARED BY: MIAMI COUNTY ENGINEER'S MAP DEPARTMENT
 DOUGLAS L. CHRISTIAN, COUNTY ENGINEER
 DATE: DECEMBER 15, 1994
 REVISED: December 20, 2022 JZWEZ