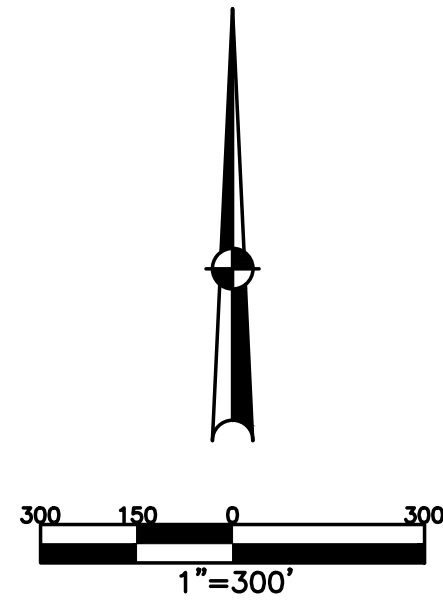


SECTION 18 SECTION 13
 TOWN 5 TOWN 7
 RANGE 6 RANGE 5

CITY OF TROY
 MIAMI COUNTY, OHIO

PARCEL ID NUMBER
 D08-_____

PLAT S.W. 179

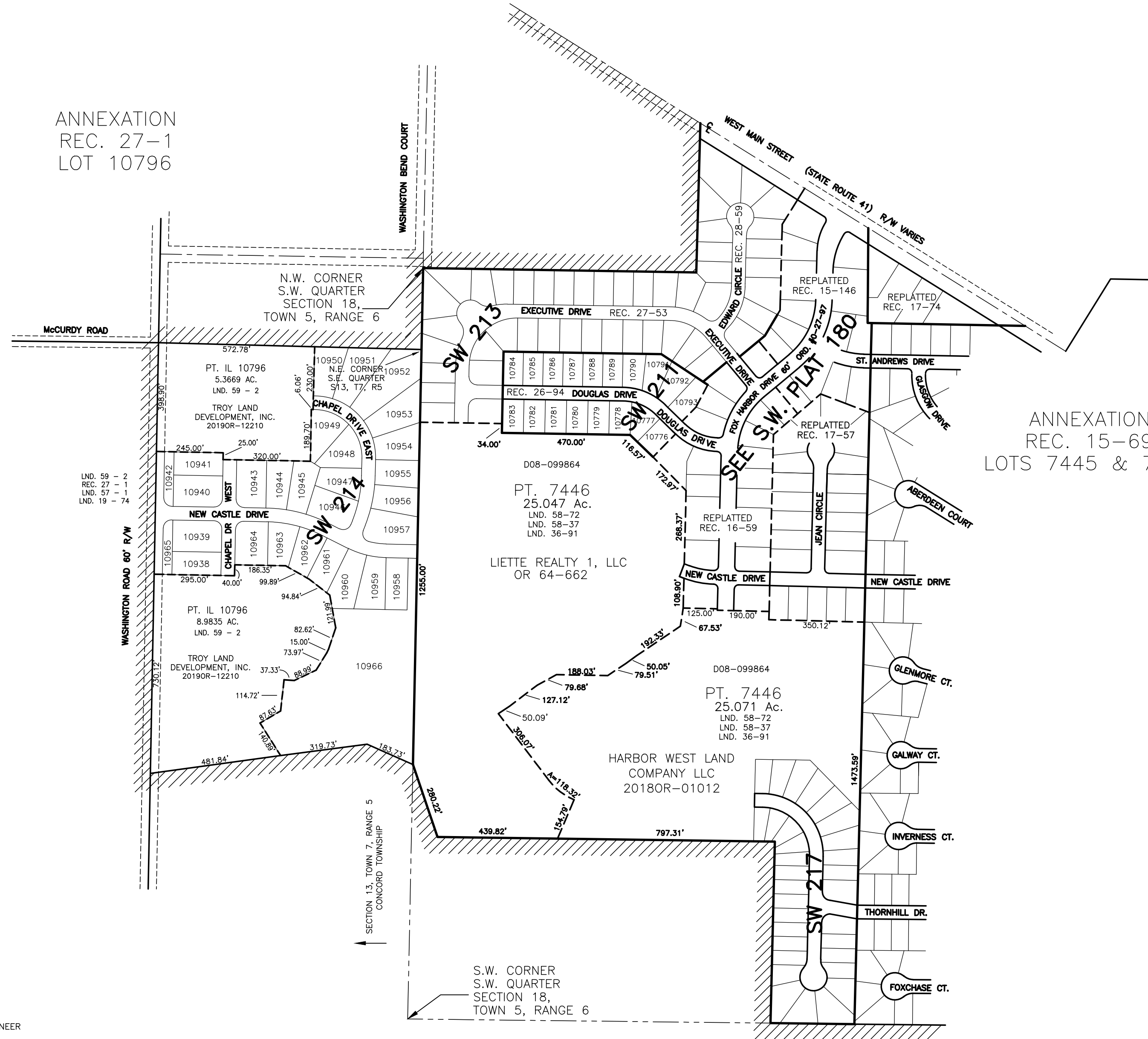


ABBREVIATION LEGEND	
20140R-07759	= RECORDER'S DOCUMENT NUMBER
OR 406-509	= OFFICIAL RECORD 406 PAGE 509
D.B. 613-172	= DEED BOOK 613, PAGE 172
REC. 15-72	= RECORDER'S PLAT BOOK 15, PAGE 72
LND. 33-15	= LAND SURVEY VOLUME 33, PAGE 15
LOT 19-12	= LOT SURVEY VOLUME 19, PAGE 12
R.R. 8-29	= ROAD RECORD VOLUME 8, PAGE 29
R/W	= RIGHT OF WAY
C	= CENTERLINE
AC.	= ACRES
TWP.	= TOWNSHIP
TR.	= TRACT
IL	= INLOT

LINE LEGEND	
	Blow-up Boundary
	Property Line
	Lot Split Line
	Section Line
	Centerline
	Right-of-Way Line
	Corporation Line

SURVEY INDEX	
LND. 3-363	REC. 15-69
LND. 19-74	REC. 15-146
LND. 36-91	REC. 16-59
LND. 57-1	REC. 17-57
LND. 58-37	REC. 17-74
LND. 58-72	REC. 23-21
LND. 59-2	REC. 27-1
	REC. 27-53
	REC. 27-97A
	REC. 28-59

ANNEXATION
 REC. 27-1
 LOT 10796



ANNEXATION
 REC. 15-69
 LOTS 7445 & 7446

PREPARED BY: MIAMI COUNTY ENGINEER'S MAP DEPARTMENT
 PAUL P. HUELSKAMP, P.E., P.S., COUNTY ENGINEER
 DATE: APRIL, 1993

REVISED: November 4, 2020 MSTORMS