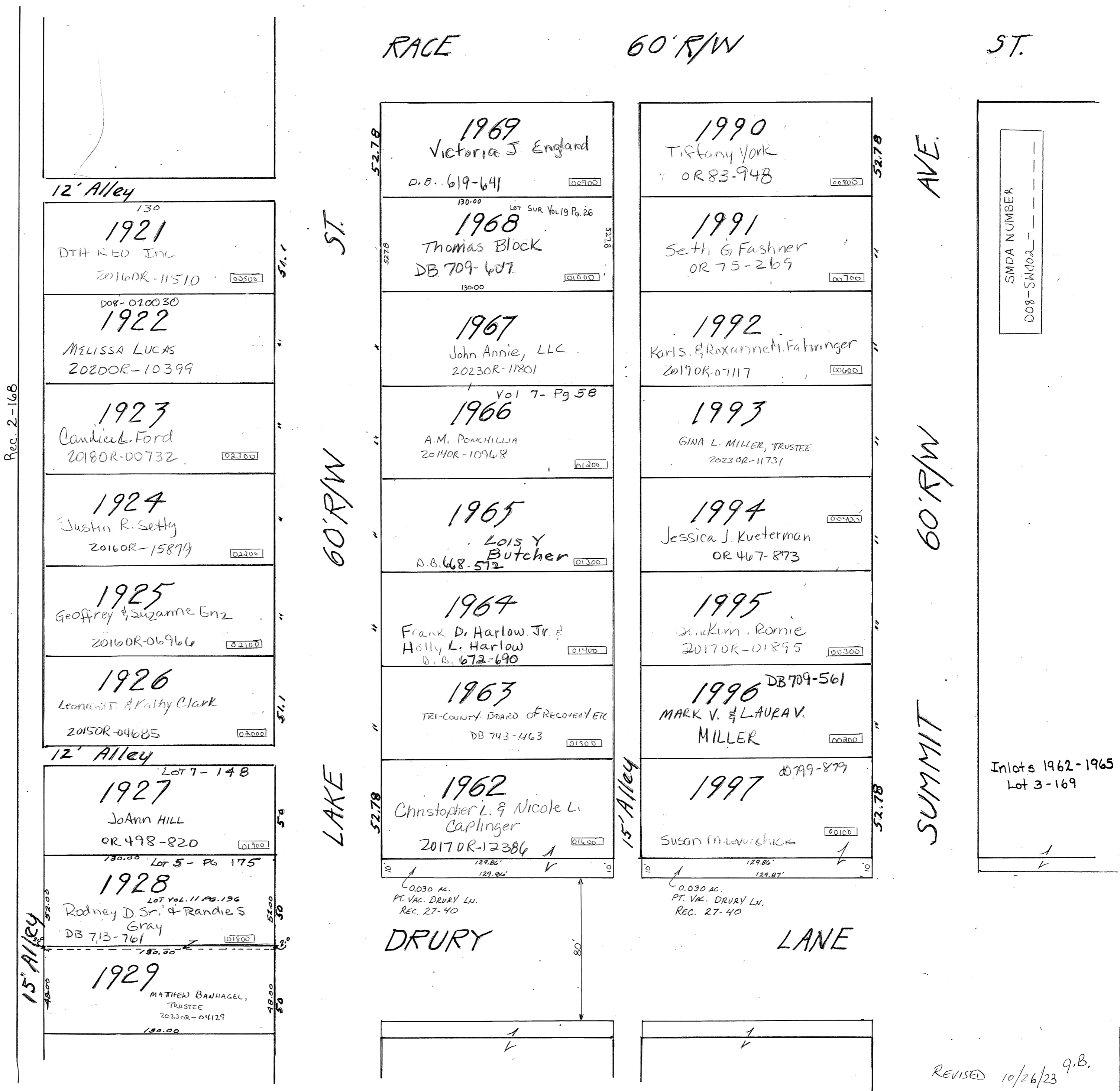


TROY

S W SECTION

PLAT NO 102
Scale 1" = 40 feet



12' Alley

130
1921
DTI REO INC
2016OR-11510

008-020030
1922
MELISSA LUCAS
2020OR-10399

1923
Candice L. Ford
2018OR-00732

1924
Justin R. Setty
2016OR-15879

1925
Geoffrey & Suzanne Enz
2016OR-06966

1926
Leonard T. & Kathy Clark
2015OR-04685

12' Alley

LOT 7-148
1927
JoAnn HILL
OR 498-820

130.00 Lot 5 - Pg 175
1928
Lot Vol. 11 Pg. 196
Rodney D. Sr. & Randie S Gray
DB 713-761

15' Alley

1929
MATHEW BANHAGEL, TRUSTEE
2023OR-04129

RACE ST

60' R/W

ST.

52.78

1969
Victoria J. England
D.B. 619-641

130.00 Lot SUR Vol. 19 Pg. 26
1968
Thomas Block
DB 709-607

130.00

1967
John Annie, LLC
2023OR-11201

Vol 7- Pg 58
1966
A.M. POKHILLIA
2014OR-10968

1965
Lois Y Butcher
D.B. 668-572

1964
Frank D. Harlow Jr. & Holly L. Harlow
D.B. 672-690

1963
TRI-COUNTY BOARD OF RECOVERY ETX
DB 743-463

52.78

1962
Christopher L. & Nicole L. Caplinger
2017OR-12386

0.030 AC.
PT. VAC. DRURY LN.
REC. 27-40

DRURY

1990
Tiffany York
OR 83-948

1991
Seth G. Fashner
OR 75-269

1992
Karl S. & Roxanne M. Fahringer
2017OR-07117

1993
GINA L. MILLER, TRUSTEE
2023OR-11731

1994
Jessica J. Kueterman
OR 467-873

1995
Franklin Romie
2017OR-01895

1996 DB 709-561
MARK V. & LAURAV. MILLER

1997 DB 799-879
Susan M. Lavrichick

0.030 AC.
PT. VAC. DRURY LN.
REC. 27-40

LANE

AVE.

60' R/W

SUMMIT

SMPA NUMBER
008-SM102

Inlots 1962-1965
Lot 3-169

REVISED 10/26/23 q.B.