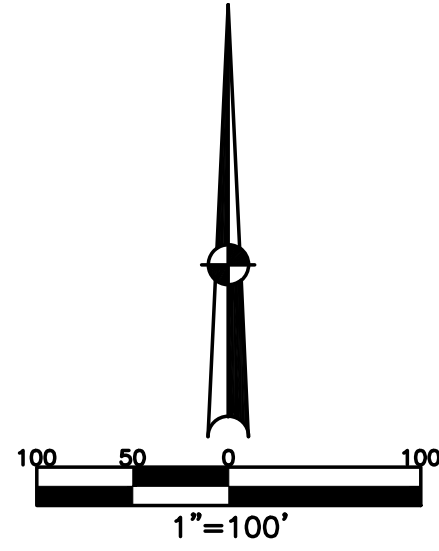


SECTION 20  
TOWN 5  
RANGE 6



ABBREVIATION LEGEND		
2014OR-07759	=	RECORDER'S DOCUMENT NUMBER
O.R. 62-856	=	OFFICIAL RECORD 62, PAGE 856
D.B. 613-172	=	DEED BOOK 613, PAGE 172
REC. 15-72	=	RECORDER'S PLAT BOOK 15, PAGE 72
LND. 33-15	=	LAND SURVEY VOLUME 33, PAGE 15
LOT 19-12	=	LOT SURVEY VOLUME 19, PAGE 12
R.R. 8-29	=	ROAD RECORD VOLUME 8, PAGE 29
R/W	=	RIGHT OF WAY
C	=	CENTERLINE
AC.	=	ACRES
TWP.	=	TOWNSHIP
TR.	=	TRACT
IL	=	INLOT

LINE LEGEND		
	=	Blow-up Boundary
	=	Property Line
	=	Lot Split Line
	=	Section Line
	=	Centerline
	=	Right-of-Way Line
	=	Corporation Line

SURVEY INDEX		
LOT 22-102	REC. 7-2 REC. 8-41,50,64 REC. 12-142 REC. 17-23 REC. 18-5 REC. 18-35	LND. 12-41 LND. 17-51

ANNEXATIONS  
REC. 12-142  
REC. 7-2 (LND. 12-41)

PREPARED BY: MIAMI COUNTY ENGINEER'S MAP DEPARTMENT  
PAUL P. HUELSKAMP, COUNTY ENGINEER  
DATE: JUNE 16, 1995  
REVISED: November 21, 2023 APALMER

CITY of TROY  
MIAMI COUNTY, OHIO

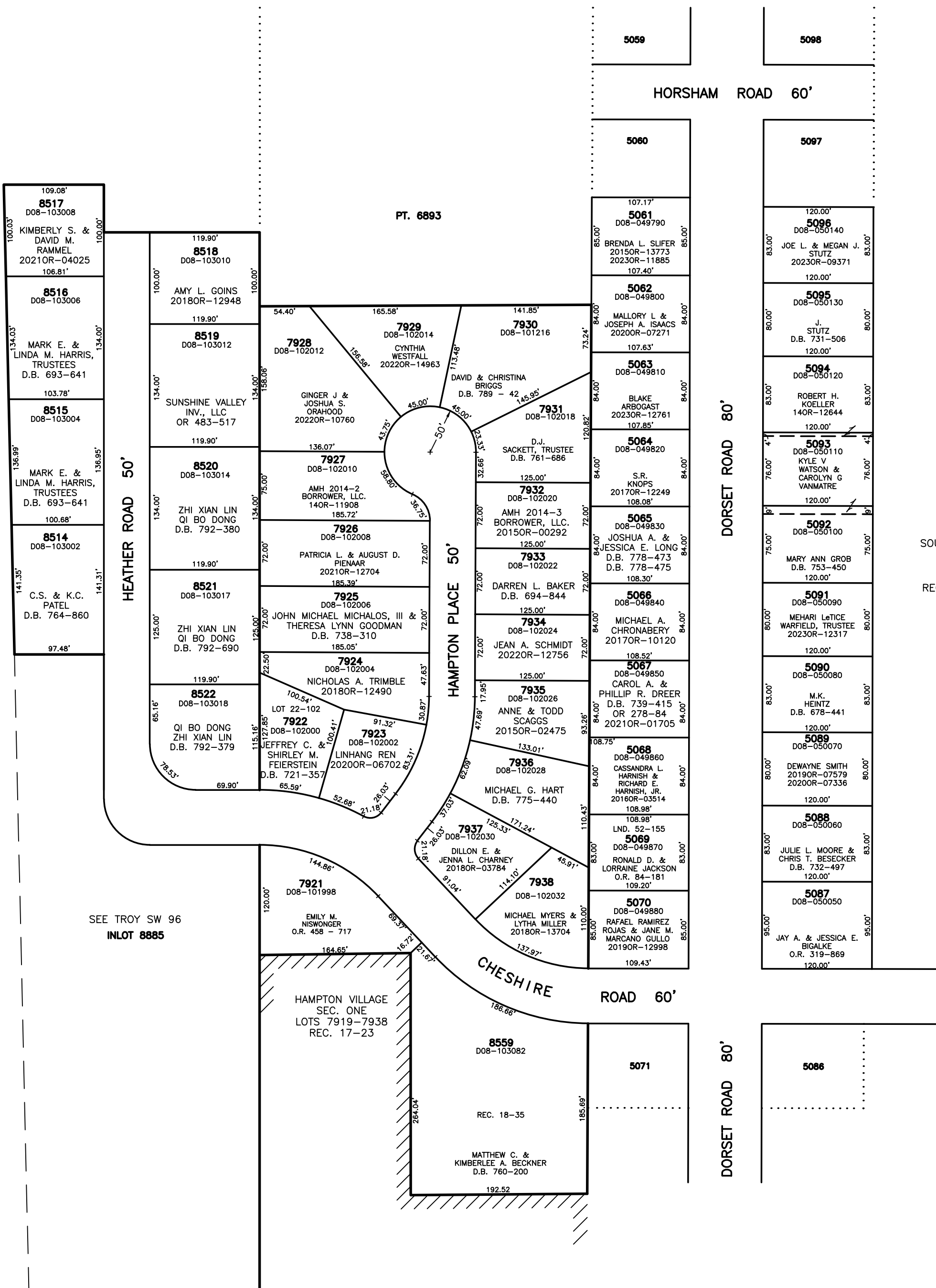
PARCEL ID NUMBER  
D08-\_\_\_\_\_

PLAT SW 94

MEADOWRUN SUBDIVISION  
SECTION 3  
LOTS 8513-8522  
REC. 18-5

INTERSTATE 75

SEE TROY SW 96  
INLOT 8885



SOUTHBROOK SUBDIVISION  
NO. 3  
LOTS 5061-5070  
5087-5096  
REC. 8-64, 8-50, 8-41