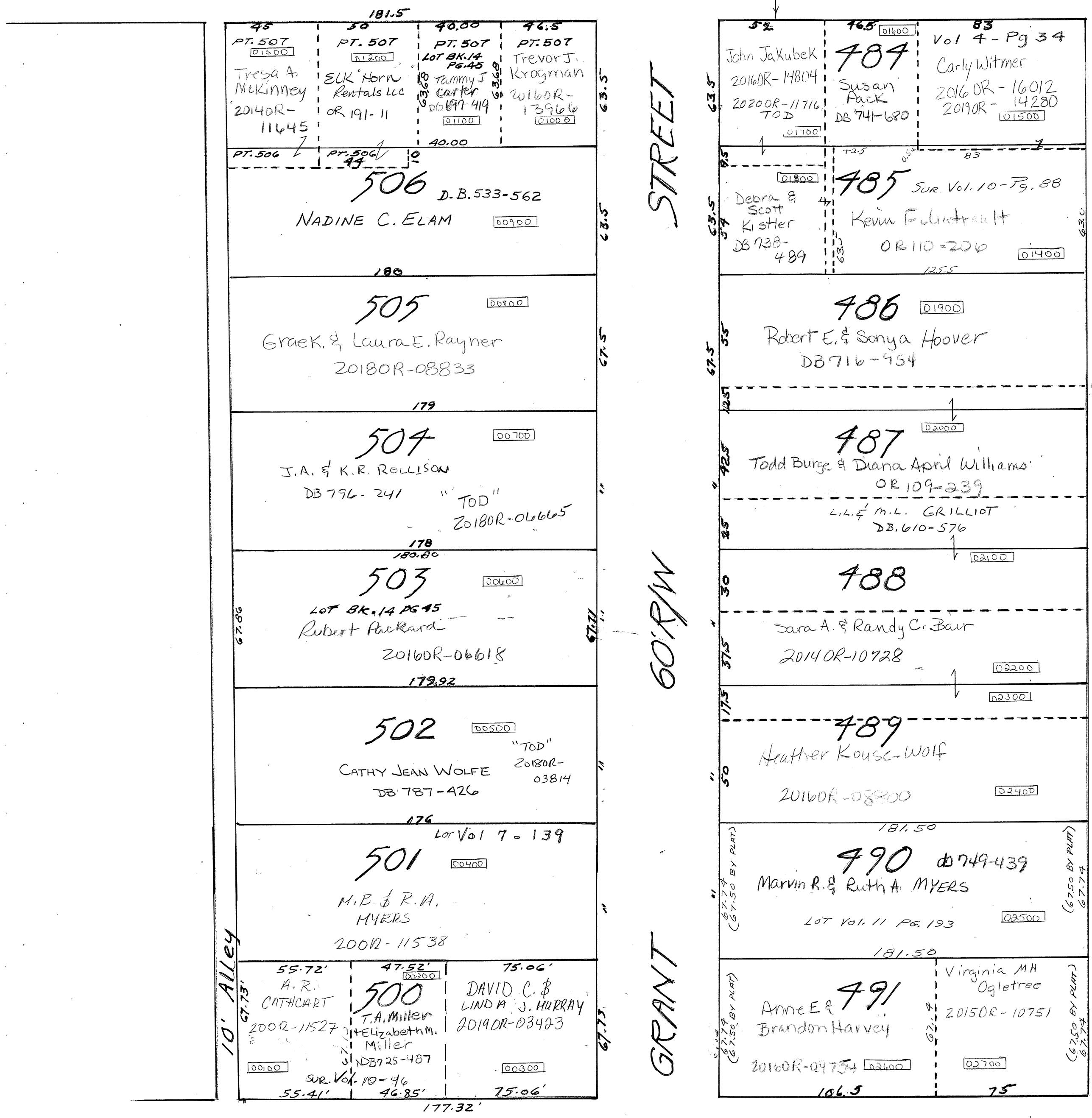


MCKAIG

AVE.



RACE

STREET

60' R/W

GRANT

60' R/W

STREET

CANAL ST.

SMDA NUMBER  
D08-SW018-\_-\_-\_-\_-

Rec. Bk. 1-Pg. 144

21' ALLEY

181.5

48  
PT. 507  
Tresa A. McKinney  
2014OR-11445  
01500

30  
PT. 507  
EUK Horn Rentals LLC  
OR 191-11  
01200

40.00  
PT. 507  
Lot BK. 14 Pg. 45  
Tammy J. Carter  
DB 897-414  
01100

46.5  
PT. 507  
Trevor J. Krogman  
2016OR-13966  
01000

40.00

PT. 506  
506  
D.B. 533-562  
NADINE C. ELAM  
00900

180

505  
Graek & Laura E. Rayner  
2018OR-08833  
00500

179

504  
J.A. & K.R. Rollison  
DB 796-241  
"TOD"  
2018OR-06665  
00700

178  
180.80

503  
Lot BK. 14 Pg. 45  
Robert Packard  
2016OR-06618  
179.92  
00600

176

502  
CATHY JEAN WOLFE  
DB 787-426  
"TOD"  
2018OR-03814  
00500

176

501  
Lot Vol 7-139  
M.B. & R.A. MYERS  
2009-11538  
00400

55.72'  
A.R. CATHCART  
2009-11527  
00100

47.52'  
500  
T.A. Miller  
Elizabeth M. Miller  
DB 725-487  
SUR. Vol. 10-46  
55.41'  
46.85'

75.06'  
DAVID C. & LINDA J. MURRAY  
2019OR-03423  
00300

75.06'

177.32'

32  
John Jakubek  
2016OR-14804  
2020OR-11716  
TOD  
01700

46.5  
484  
Susan Pack  
DB 741-680  
01600

83  
Vol 4-Pg 34  
Carly Witmer  
2016OR-16012  
2019OR-14280  
01500

42.5  
485  
Debra & Scott Kistler  
DB 738-489  
4  
Kevin Fulmtrault  
OR 110-206  
01400

83

486  
Robert E. & Sonya Hoover  
DB 716-954  
01900

125.5

487  
Todd Burge & Diana April Williams  
OR 109-239  
L.L. & M.L. GRILLIOT  
DB 610-576  
02000

488  
Sara A. & Randy C. Bair  
2014OR-10728  
02200

489  
Heather Kouse-Wolf  
2016OR-08200  
02300

181.50

490  
Marvin R. & Ruth A. MYERS  
Lot Vol. 11 Pg. 193  
02500

181.50

491  
Anne E & Brandon Harvey  
2016OR-04754  
03100

75  
Virginia M.H. Ogletree  
2015OR-10751  
02700