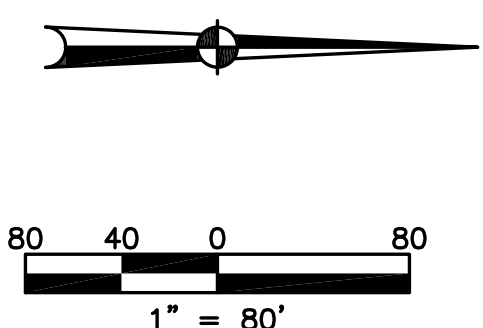
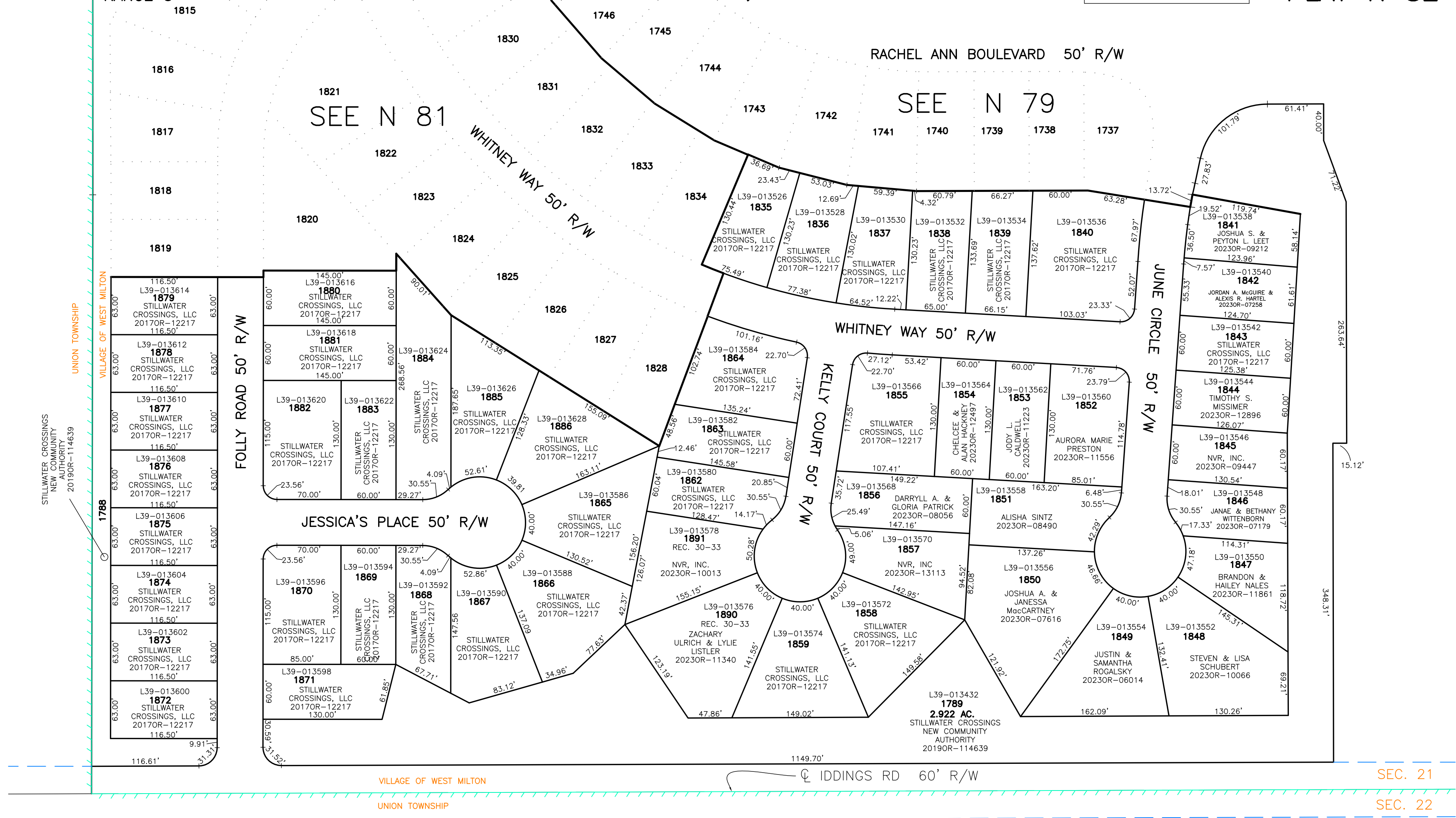


SECTION 21
TOWN 6
RANGE 5

VILLAGE OF WEST MILTON
MIAMI COUNTY, OHIO

PARCEL NUMBER
L39-_____

PLAT N 82



ABBREVIATION LEGEND	
2014OR-00759	= RECORDER'S DOCUMENT NUMBER
OR 406-509	= OFFICIAL RECORD 406 PAGE 509
D.B. 613-172	= DEED BOOK 613, PAGE 172
REC. 15-72	= RECORDER'S PLAT BOOK 15, PAGE 72
LND. 33-15	= LAND SURVEY VOLUME 33, PAGE 15
LOT 19-12	= LOT SURVEY VOLUME 19, PAGE 12
R.R. 8-29	= ROAD RECORD VOLUME 8, PAGE 29
R/W	= RIGHT OF WAY
CL	= CENTERLINE
AC.	= ACRES
TWP.	= TOWNSHIP
TR.	= TRACT
IL	= INLOT
OL	= OUTLOT

LINE LEGEND	
	Plat Line
	Property Line
	Lot Split Line
	Section Line
	Centerline
	Right-of-Way Line
	Easement
	Pending Survey/Split
	Pending Replat
	School District
	Adjacent PL
	Corporation Line

SURVEY INDEX	
STILLWATER CROSSINGS PHASE 3	
IL 1835 - 1886	
REC. 29-81	

REC. 30-33
RE-PLAT
IL 1860 & 1861
to
IL 1890 & 1891
(EASEMENT CHANGES)

PREPARED BY: MIAMI COUNTY ENGINEER'S MAP DEPARTMENT
PAUL P. HUELSKAMP, P.E., P.S., COUNTY ENGINEER
DATE: OCT. 31, 2022 APALMER & MSTORES
REVISED: Nov. 29, 2023 DJACQUEMIN