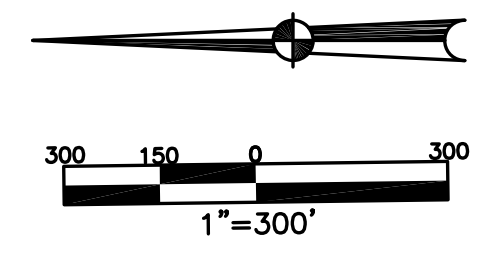


CITY of TROY MIAMI COUNTY, OHIO

PARCEL NUMBER
D08-_____

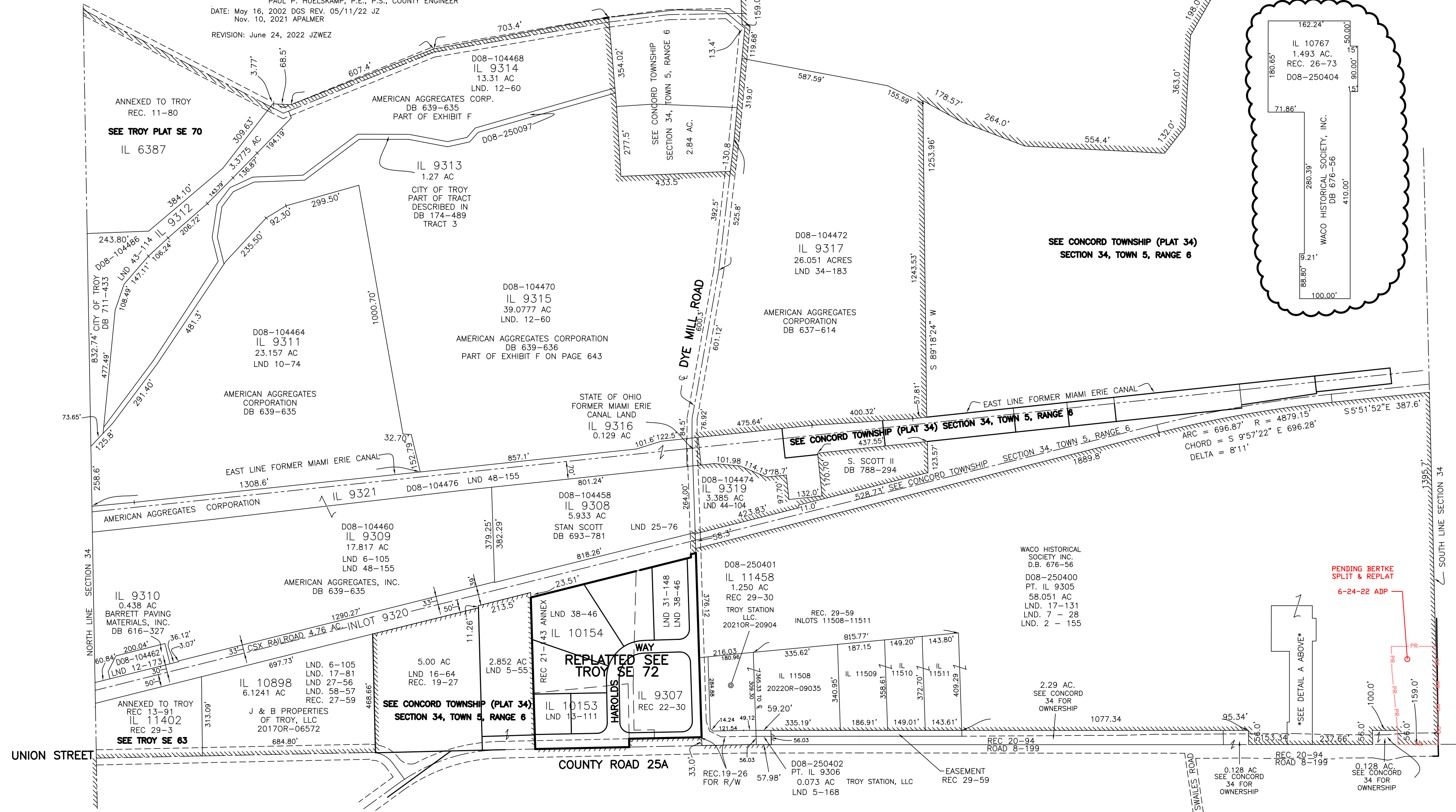
SE 71

ABBREVIATION LEGEND		SURVEY INDEX	
DB 613-172	= DEED BOOK 613, PAGE 172	REC. 19-132	NW QTR
REC. 15-72	= RECORDER'S PLAT BOOK 15, PAGE 72	ANNEX	NE QTR
LND. 33-15	= LAND SURVEY VOLUME 33, PAGE 15	LND. 30 - 175	LND. 17 - 19
LOT 19-12	= LOT SURVEY VOLUME 19, PAGE 12	(260.788 AC.)	LND. 24 - 31
R.R. 8-29	= ROAD RECORD VOLUME 8, PAGE 29	INLOTS 9305-9321	LND. 30 - 175
R/W	= RIGHT OF WAY		LND. 48 - 98
CL	= CENTERLINE	REC. 21-143	
AC	= ACRES	ANNEX	
TWP.	= TOWNSHIP	(6.0159 AC.)	
TR	= TRACT	INLOTS 10153-10154	
IL	= INLOT CREATED BY RECORDER'S PLAT	REC. 26-73	
		(1.493 AC.)	
		INLOT 10767	
LINE LEGEND		SW QTR	
	Blow-up Boundary	LND. 2 - 94	LND. 4 - 125
	Property Line	LND. 10 - 194	LND. 4 - 220
	Lot Split Line	LND. 22 - 145	LND. 9 - 47
	Section Line	LND. 31 - 42	LND. 13 - 82
	Centerline	LND. 44 - 166	LND. 14 - 178
	Right-of-Way Line		LND. 16 - 80
	Corporation Line		LND. 19 - 186
			LND. 22 - 173
			LND. 25 - 138
			LND. 31 - 118
			LND. 31 - 193
			LND. 37 - 90
			REC. 29 - 59
			REC. 7 - 3

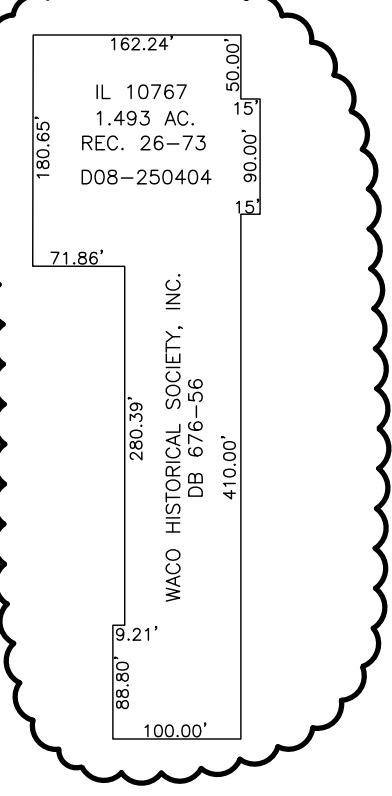


SEE CONCORD TOWNSHIP (PLAT 34)
SECTION 34, TOWN 5, RANGE 6

PREPARED BY: MIAMI COUNTY ENGINEER'S MAP DEPARTMENT
PAUL P. HUELSKAMP, P.E., P.S., COUNTY ENGINEER
DATE: May 16, 2002 DGS REV. 05/11/22 JZ
Nov. 10, 2021 APALMER
REVISION: June 24, 2022 JZWEZ

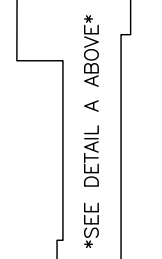


DETAIL A:
NOT TO SCALE



SEE CONCORD TOWNSHIP (PLAT 34)
SECTION 34, TOWN 5, RANGE 6

PENDING BERTKE
SPLIT & REPLAT
6-24-22 ADP



SOUTH LINE SECTION 34

UNION STREET

COUNTY ROAD 25A

SWALLEY ROAD