

MIAMI COUNTY, OHIO
CITY OF TROY

S.E. PLAT 62

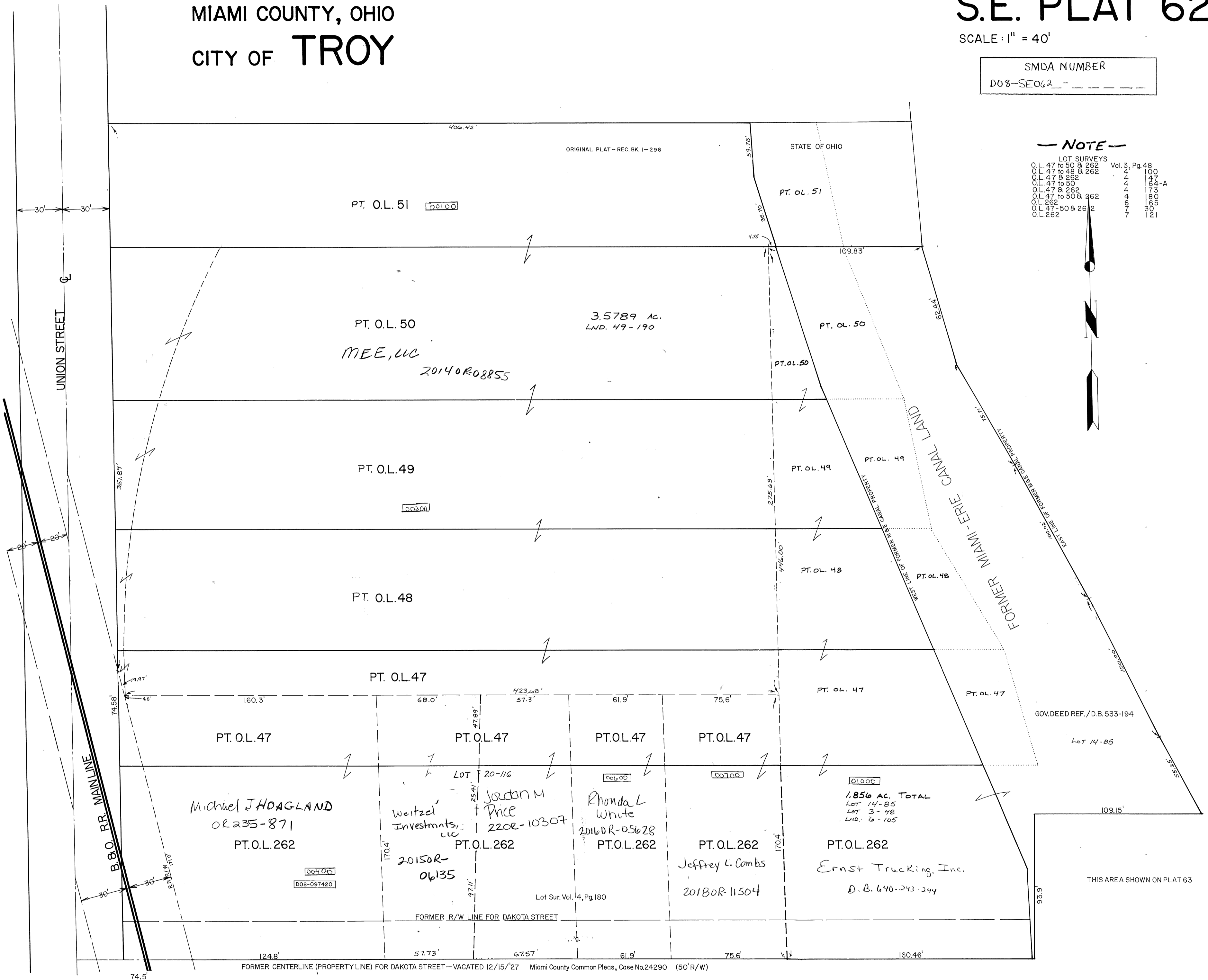
SCALE: 1" = 40'

SMDA NUMBER
D08-SE062 -

NOTE

LOT SURVEYS

| Q.L. 47 to 50 & 262 | Vol. 3, Pg. 48 | |
|---------------------|----------------|-------|
| O.L. 47 to 48 & 262 | 4 | 100 |
| O.L. 47 & 262 | 4 | 147 |
| O.L. 47 to 50 | 4 | 164-A |
| O.L. 47 & 262 | 4 | 173 |
| O.L. 47 to 50 & 262 | 4 | 180 |
| O.L. 262 | 6 | 165 |
| O.L. 47-50 & 262 | 7 | 301 |
| O.L. 262 | 7 | 121 |



REVISED 8-21-2008
D. VENTURA

FORMER CENTERLINE (PROPERTY LINE) FOR DAKOTA STREET - VACATED 12/15/27 Miami County Common Pleas, Case No. 24290 (50' R/W)