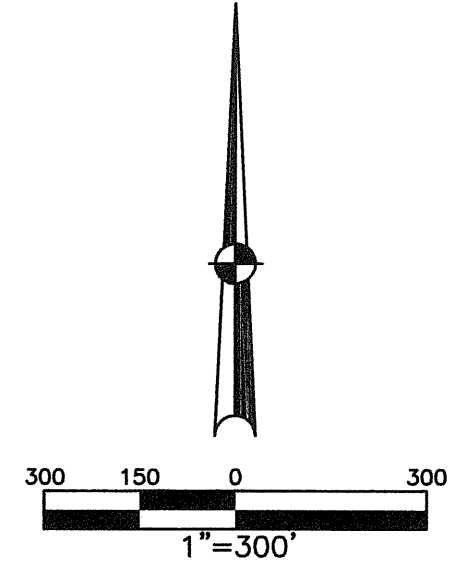


CONCORD TOWNSHIP
SECTION 7 & 18,
TOWN 5,
RANGE 6

CITY OF TROY
MIAMI COUNTY, OHIO

PLAT NW 108

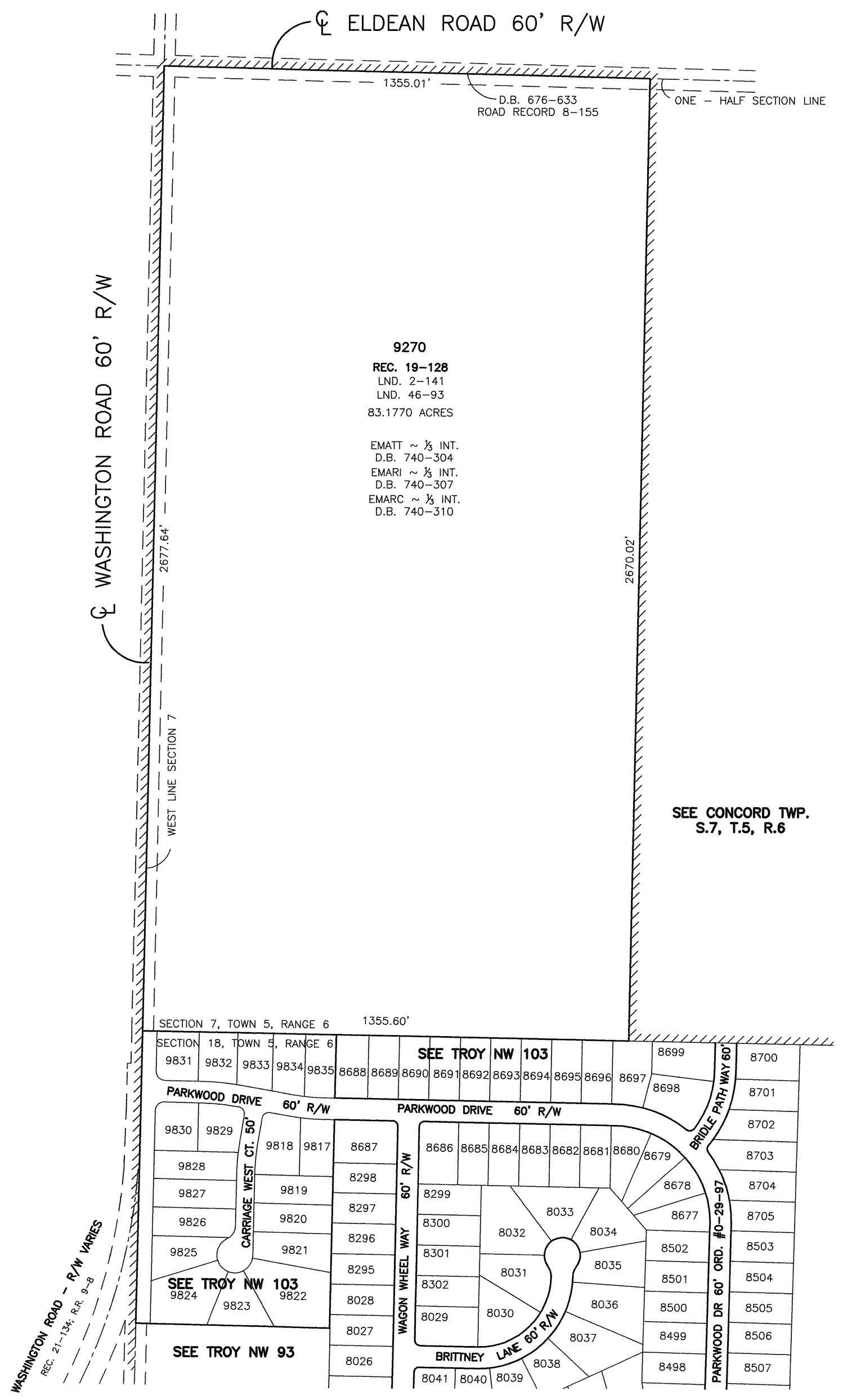


ABBREVIATION LEGEND	
D.B. 613-172	= DEED BOOK 613, PAGE 172
REC. 15-72	= RECORDER'S PLAT BOOK 15, PAGE 72
LND. 33-15	= LAND SURVEY VOLUME 33, PAGE 15
LOT 19-12	= LOT SURVEY VOLUME 19, PAGE 12
R.R. 8-29	= ROAD RECORD VOLUME 8, PAGE 29
R/W	= RIGHT OF WAY
CL	= CENTERLINE
AC.	= ACRES
TWP.	= TOWNSHIP
TR.	= TRACT
Ⓢ	= LOT CREATED BY RECORDER'S PLAT

LINE LEGEND	
	Blow-up Boundary
	Property Line
	Lot Split Line
	Section Line
	Centerline
	Right-of-Way Line
	Corporation Line

SURVEY INDEX		
LND. 2-141	ANNEXATION:	
LND. 11-1	REC. 19-128	
LND. 42-188	ROAD RELOCATION:	
LND. 46-93	R.R. 9-8	
	CENTERLINE PLAT:	
	REC. 21-134	

ANNEXATION
LOTS 9270 & 9271
REC. 19-128



PREPARED BY: MIAMI COUNTY ENGINEER'S MAP DEPARTMENT
DOUGLAS L. CHRISTIAN, COUNTY ENGINEER
DATE: JANUARY 30, 2004
REVISED: JULY 24, 2008