

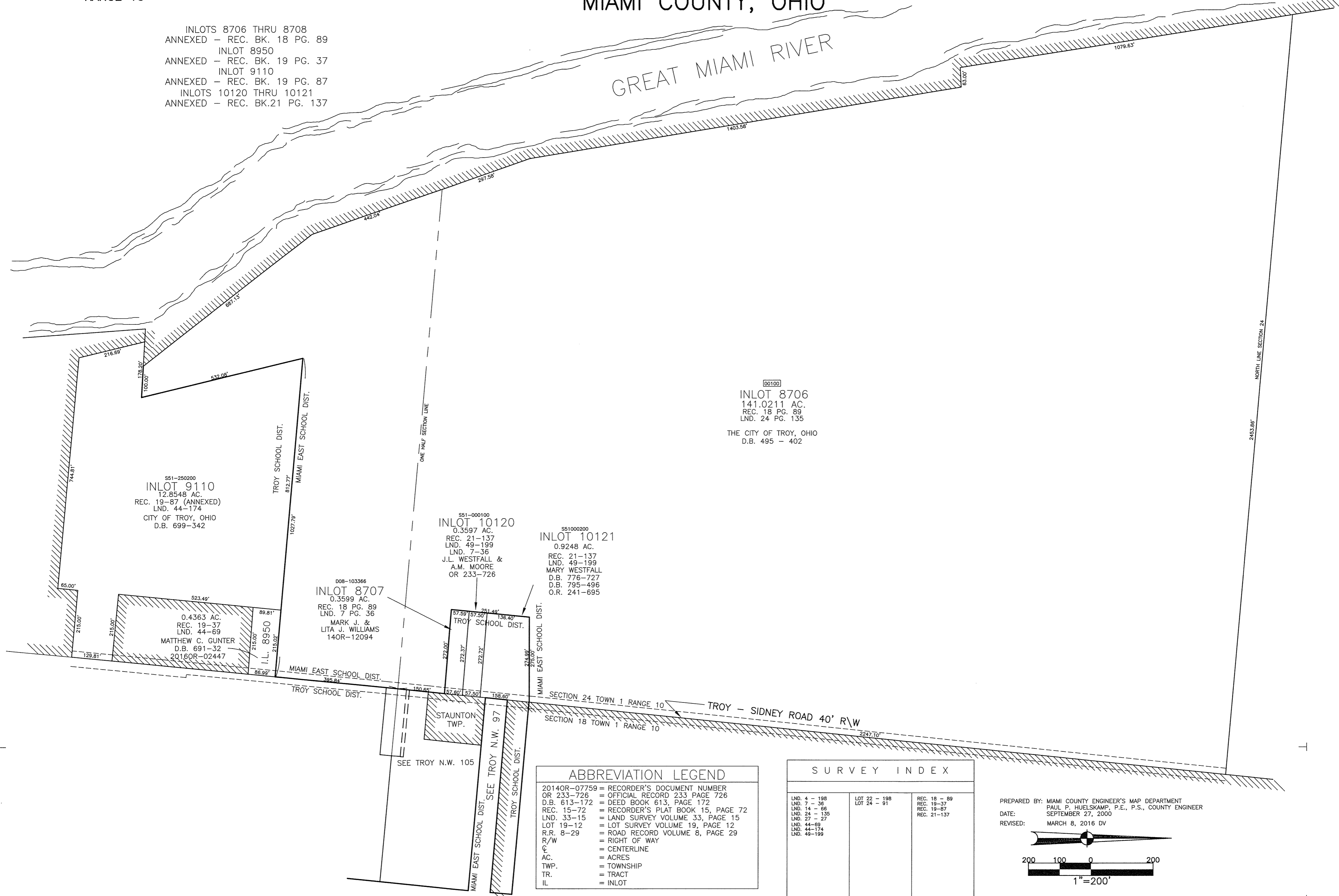
SECTION 24  
TOWN 1  
RANGE 10

CITY OF TROY  
MIAMI COUNTY, OHIO

PLAT N.W. 106

INLOTS 8706 THRU 8708  
ANNEXED - REC. BK. 18 PG. 89  
INLOT 8950  
ANNEXED - REC. BK. 19 PG. 37  
INLOT 9110  
ANNEXED - REC. BK. 19 PG. 87  
INLOTS 10120 THRU 10121  
ANNEXED - REC. BK.21 PG. 137

GREAT MIAMI RIVER



00100  
INLOT 8706  
141.0211 AC.  
REC. 18 PG. 89  
LND. 24 PG. 135  
THE CITY OF TROY, OHIO  
D.B. 495 - 402

S51-250200  
INLOT 9110  
12.8548 AC.  
REC. 19-87 (ANNEXED)  
LND. 44-174  
CITY OF TROY, OHIO  
D.B. 699-342

S51-000100  
INLOT 10120  
0.3597 AC.  
REC. 21-137  
LND. 49-199  
LND. 7-36  
J.L. WESTFALL &  
A.M. MOORE  
OR 233-726

S51000200  
INLOT 10121  
0.9248 AC.  
REC. 21-137  
LND. 49-199  
MARY WESTFALL  
D.B. 776-727  
D.B. 795-496  
O.R. 241-695

D08-103366  
INLOT 8707  
0.3599 AC.  
REC. 18 PG. 89  
LND. 7 PG. 36  
MARK J. &  
LITA J. WILLIAMS  
140R-12094

0.4363 AC.  
REC. 19-37  
LND. 44-69  
MATTHEW C. GUNTER  
D.B. 691-32  
2016OR-02447

ABBREVIATION LEGEND	
2014OR-07759	= RECORDER'S DOCUMENT NUMBER
OR 233-726	= OFFICIAL RECORD 233 PAGE 726
D.B. 613-172	= DEED BOOK 613, PAGE 172
REC. 15-72	= RECORDER'S PLAT BOOK 15, PAGE 72
LND. 33-15	= LAND SURVEY VOLUME 33, PAGE 15
LOT 19-12	= LOT SURVEY VOLUME 19, PAGE 12
R.R. 8-29	= ROAD RECORD VOLUME 8, PAGE 29
R/W	= RIGHT OF WAY
C	= CENTERLINE
AC.	= ACRES
TWP.	= TOWNSHIP
TR.	= TRACT
IL	= INLOT

SURVEY INDEX		
LND. 4 - 198	LOT 22 - 198	REC. 18 - 89
LND. 7 - 36	LOT 24 - 91	REC. 19-37
LND. 14 - 66		REC. 19-87
LND. 24 - 135		REC. 21-137
LND. 27 - 27		
LND. 44-89		
LND. 44-174		
LND. 49-199		

PREPARED BY: MIAMI COUNTY ENGINEER'S MAP DEPARTMENT  
PAUL P. HUELSKAMP, P.E., P.S., COUNTY ENGINEER  
DATE: SEPTEMBER 27, 2000  
REVISED: MARCH 8, 2016 DV

