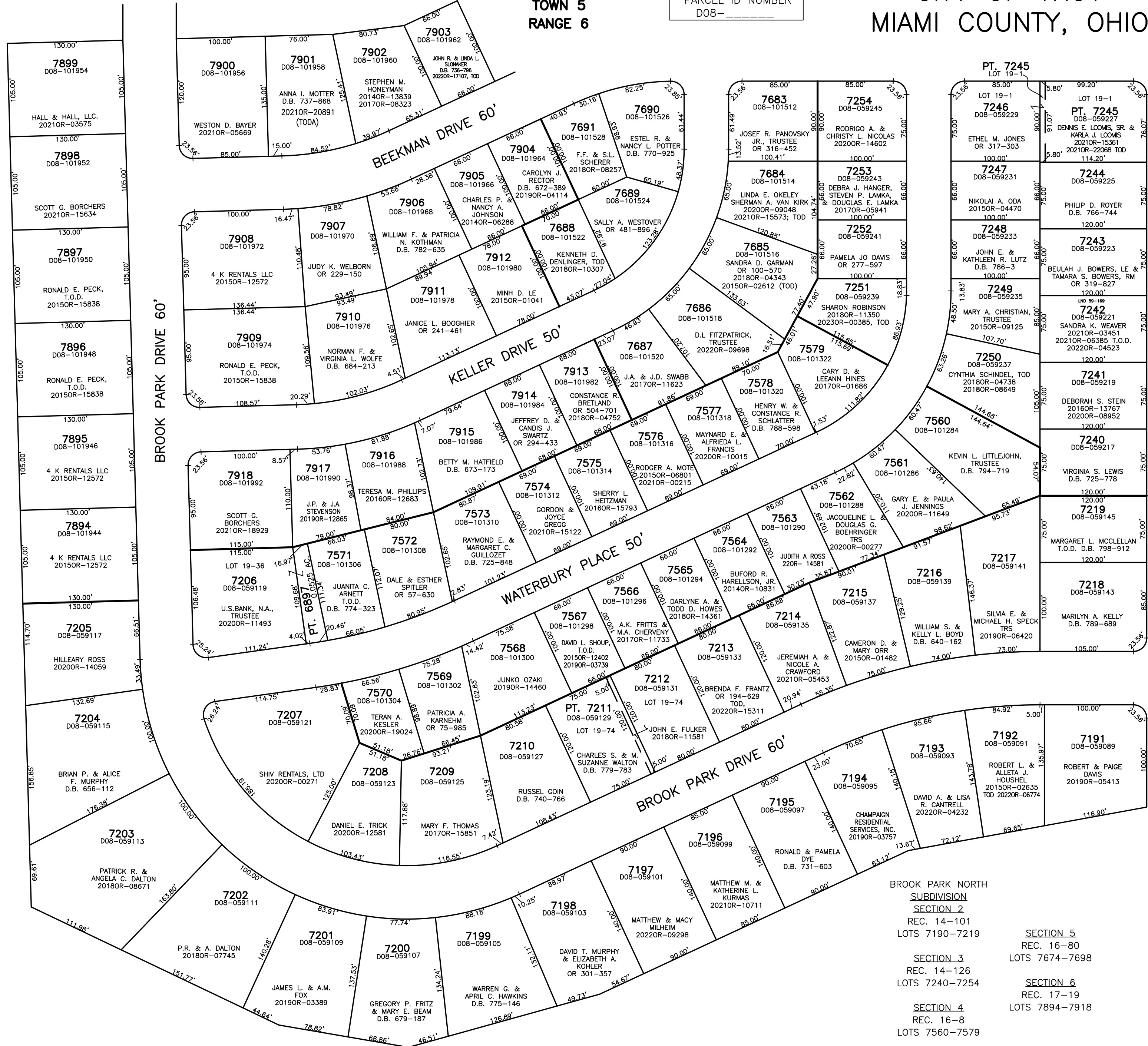


SECTION 17
TOWN 5
RANGE 6

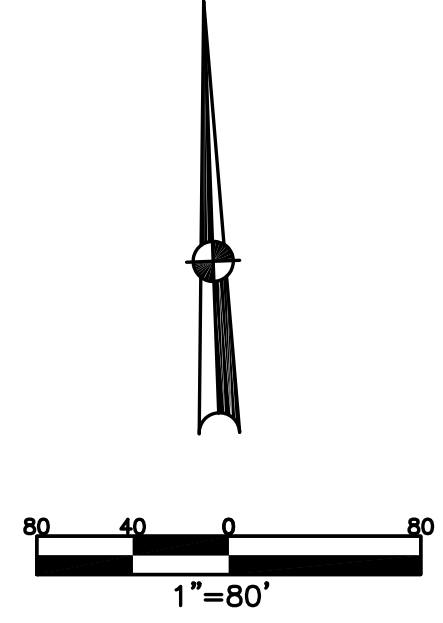
PARCEL ID NUMBER
D08-_____

CITY OF TROY
MIAMI COUNTY, OHIO

PLAT NW 101



LYTLE ROAD



ABBREVIATION LEGEND	
20140R-07759	= RECORDER'S DOCUMENT NUMBER
OR 406-509	= OFFICIAL RECORD 406 PAGE 509
D.B. 613-172	= DEED BOOK 613, PAGE 172
REC. 15-72	= RECORDER'S PLAT BOOK 15, PAGE 72
LND. 33-15	= LAND SURVEY VOLUME 33, PAGE 15
LOT 19-12	= LOT SURVEY VOLUME 19, PAGE 12
R.R. 8-29	= ROAD RECORD VOLUME 8, PAGE 29
R/W	= RIGHT OF WAY
C.	= CENTERLINE
AC.	= ACRES
TWP.	= TOWNSHIP
TR.	= TRACT
IL	= INLOT

LINE LEGEND	
	Blow-up Boundary
	Property Line
	Lot Split Line
	Section Line
	Centerline
	Right-of-Way Line
	Corporation Line

SURVEY INDEX	
REC. 14-101	LOT 19-1
REC. 14-126	LOT 19-36
REC. 16-8	LOT 19-74
REC. 16-80	
REC. 17-19	

BROOK PARK NORTH
SUBDIVISION
SECTION 2
REC. 14-101
LOTS 7190-7219

SECTION 5
REC. 16-80
LOTS 7674-7698

SECTION 3
REC. 14-126
LOTS 7240-7254

SECTION 4
REC. 16-8
LOTS 7560-7579

SECTION 6
REC. 17-19
LOTS 7894-7918

PREPARED BY:
MIAMI COUNTY ENGINEER'S MAP DEPARTMENT
PAUL P. HUELSKAMP, P.E., P.S., COUNTY ENGINEER
DATE: MAY 2, 2014 MB
REVISED: January 12, 2023 JVINCENT