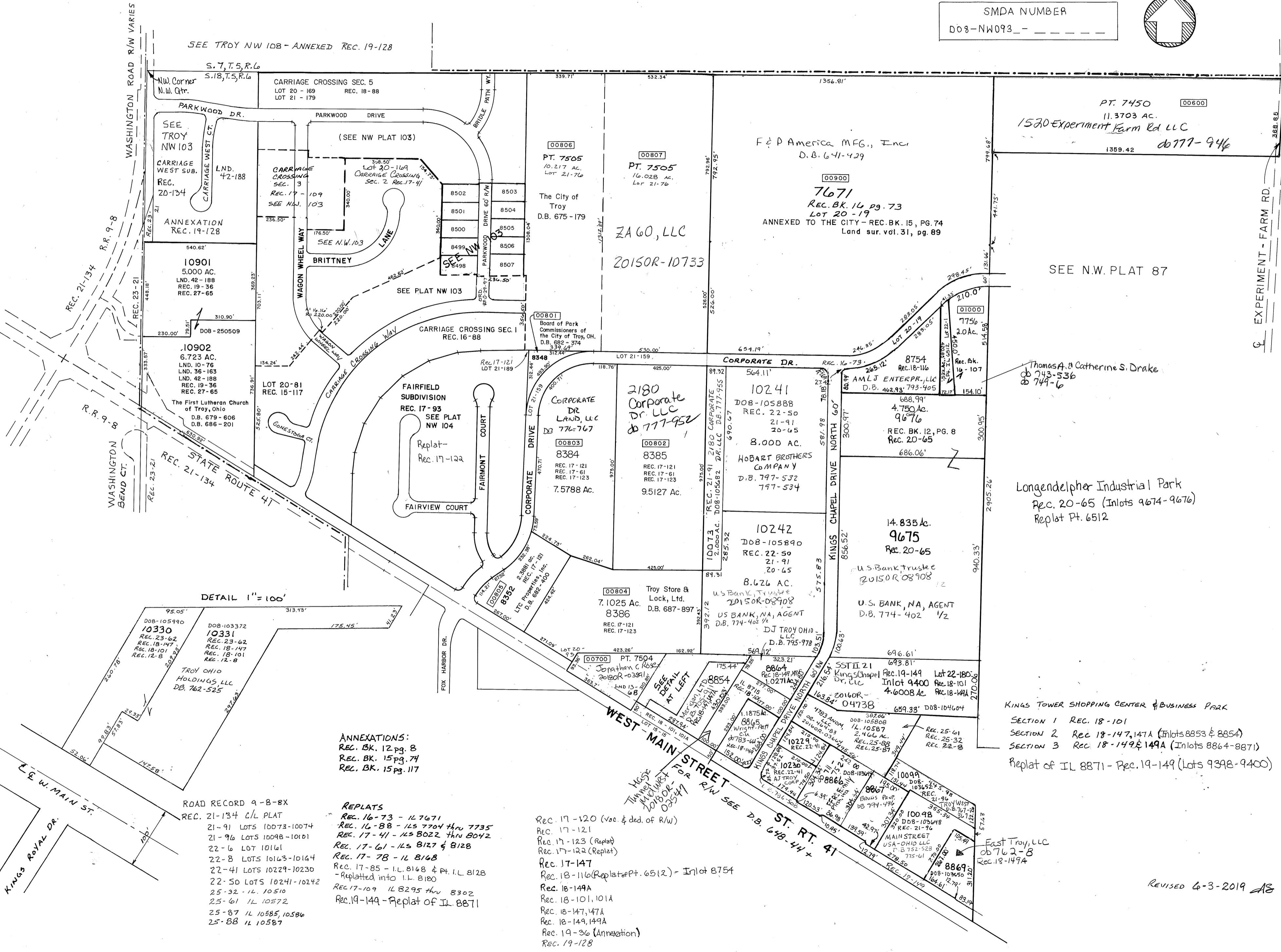
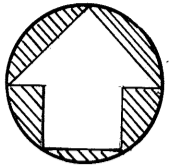


MIAMI COUNTY, OH
CITY OF TROY

N.W. PLAT NO. 93

SCALE: 1" = 300'

SMDA NUMBER
D08-NW093-_____



SEE TROY NW 10B - ANNEXED REC. 19-128

S. 7, T. 5, R. 6

CARRIAGE CROSSING SEC. 5
LOT 20 - 169 REC. 18-88
LOT 21 - 179

PARKWOOD DR.

SEE TROY NW 103

CARRIAGE WEST SUB.
REC. 20-134

ANNEXATION
REC. 19-128

10901
5.000 AC.
LND. 42-188
REC. 19-36
REC. 27-65

10902
6.723 AC.
LND. 10-76
LND. 36-163
LND. 42-188
REC. 19-36
REC. 27-65

The First Lutheran Church
of Troy, Ohio
D.B. 679-606
D.B. 686-201

LOT 20-81
REC. 15-117

STATE ROUTE 41

REC. 21-134

REC. 21-134

REC. 21-134

REC. 21-134

REC. 21-134

REC. 21-134

REC. 21-134

REC. 21-134

REC. 21-134

REC. 21-134

REC. 21-134

REC. 21-134

REC. 21-134

REC. 21-134

REC. 21-134

REC. 21-134

REC. 21-134

REC. 21-134

REC. 21-134

REC. 21-134

REC. 21-134

REC. 21-134

REC. 21-134

REC. 21-134

REC. 21-134

REC. 21-134

REC. 21-134

REC. 21-134

REC. 21-134

REC. 21-134

REC. 21-134

ANNEXATIONS:
REC. BK. 12 pg. 8
REC. BK. 15 pg. 74
REC. BK. 15 pg. 117

REPLATS
REC. 16-73 - 1L 7671
REC. 16-88 - 1L 7704 thru 7735
REC. 17-41 - 1L 8022 thru 8042
REC. 17-61 - 1L 8127 & 8128
REC. 17-78 - 1L 8168
REC. 17-85 - 1L 8168 & Pt. 1L 8128
- Replatted into 1L 8180
REC. 17-109 1L 8295 thru 8302
REC. 19-149 - Replat of IL 8871

REC. 17-120 (vac & ded. of R/W)
REC. 17-121
REC. 17-123 (Replat)
REC. 17-122 (Replat)
REC. 17-147
REC. 18-116 (Replat of Pt. 6512) - Inlot 8754
REC. 18-149A
REC. 18-101, 101A
REC. 18-147, 147A
REC. 18-149, 149A
REC. 19-36 (Annexation)
REC. 19-128

KINGS TOWER SHOPPING CENTER & BUSINESS PARK
SECTION 1 REC. 18-101
SECTION 2 REC. 18-147, 147A (Inlots 8853 & 8854)
SECTION 3 REC. 18-149 & 149A (Inlots 8864 & 8871)
Replat of IL 8871 - Rec. 19-149 (Lots 9398-9400)

East Troy, LLC
08762-8
REC. 18-149A

REVISED 6-3-2019 AS