

TROY

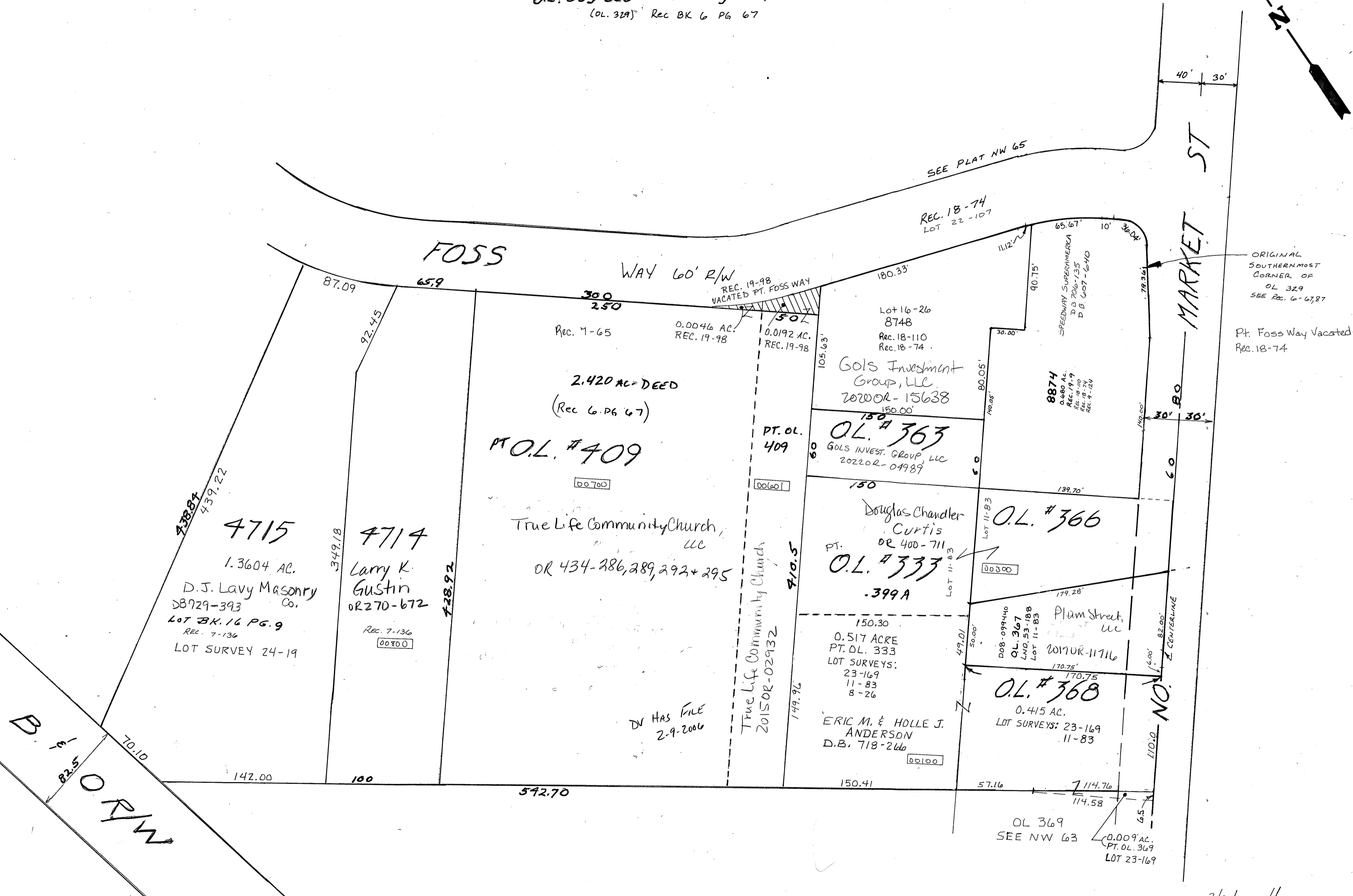
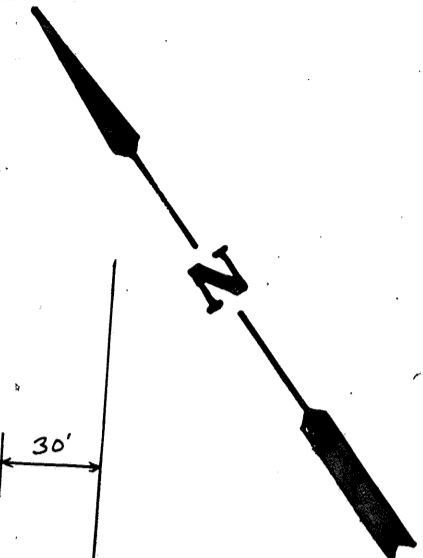
N.W. SECTION

PLAT NO 64

Scale 1" = 60 Feet

SMDA NUMBER
008-NW064- - - - -

Recorders Plats
O.L. #409 - BK 7 - Pg. 65
4714-15 - BK 7 - Pg. 136
(OL. 329)
O.L. 333-368 - BK 6 - Pg. 86, 87 - ANNEXED
(OL. 329) Rec BK 6 Pg 67



ORIGINAL SOUTHERN MOST CORNER OF OL 329 SEE REC. 6-67,87
Pt. Foss Way Vacated- REC. 18-74

82.5' 70.10' 82.5'

4715
1.3604 AC.
D.J. Lavy Masonry Co.
DB729-393
LOT BK. 16 PG. 9
REC. 7-136
LOT SURVEY 24-19

4714
Larry K. Gustin
OR 270-672
REC. 7-136
00800

2.420 AC DEED
(Rec 6 Pg 67)
PT. O.L. #409
00700
True Life Community Church, LLC
OR 434-286, 289, 292 + 295

DJ HAS FILE
2-9-2006

True Life Community Church
2015 OR-02932

Lot 16-26
8748
Rec. 18-110
Rec. 18-74
Gols Investment Group, LLC
2020R-15638
150.00'
O.L. #363
GOLS INVEST. GROUP, LLC
202202-04989

Douglas Chandler Curtis
OR 400-711
PT. O.L. #333
.399A
Lot 11-83

0.517 ACRE
PT. O.L. 333
LOT SURVEYS:
23-169
11-83
8-26
ERIC M. & HOLLE J. ANDERSON
D.B. 718-260
00100

8874
0.680 AC.
REC. 19-9
REC. 18-110
REC. 18-74
REC. 19-124
SPEEDWAY SUPERMERCA
D.B. 706-735
D.B. 607-640

Plam Street, LLC
2010R-11716
O.L. #367
D.B. 099440
LAND. 53-188
Lot 11-83
170.75'

O.L. #368
0.415 AC.
LOT SURVEYS: 23-169
11-83

O.L. 369
SEE NW 63
0.009 AC.
PT. O.L. 369
LOT 23-169

3/30/22
REVISED 4-17-2012
D. VENTURA