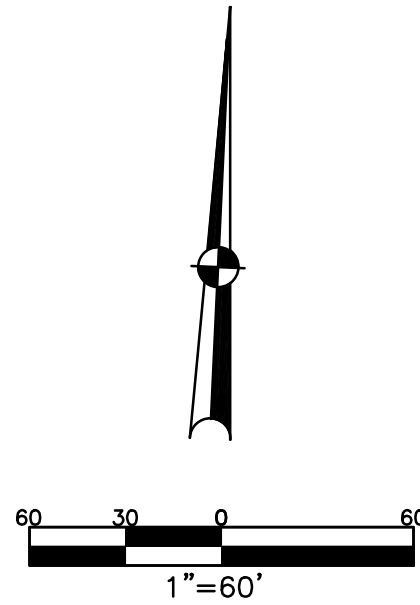


SECTION 17
TOWN 5
RANGE 6

CITY OF TROY
MIAMI COUNTY, OHIO

PARCEL ID NUMBER
D08- PLAT NW 52



ABBREVIATION LEGEND	
2014OR-00759	= RECORDER'S DOCUMENT NUMBER
OR 406-509	= OFFICIAL RECORD 406 PAGE 509
D.B. 613-172	= DEED BOOK 613, PAGE 172
REC. 15-72	= RECORDER'S PLAT BOOK 15, PAGE 72
LND. 33-15	= LAND SURVEY VOLUME 33, PAGE 15
LOT 19-12	= LOT SURVEY VOLUME 19, PAGE 12
R.R. 8-29	= ROAD RECORD VOLUME 8, PAGE 29
R/W	= RIGHT OF WAY
C	= CENTERLINE
AC.	= ACRES
TWP.	= TOWNSHIP
TR.	= TRACT
IL	= INLOT

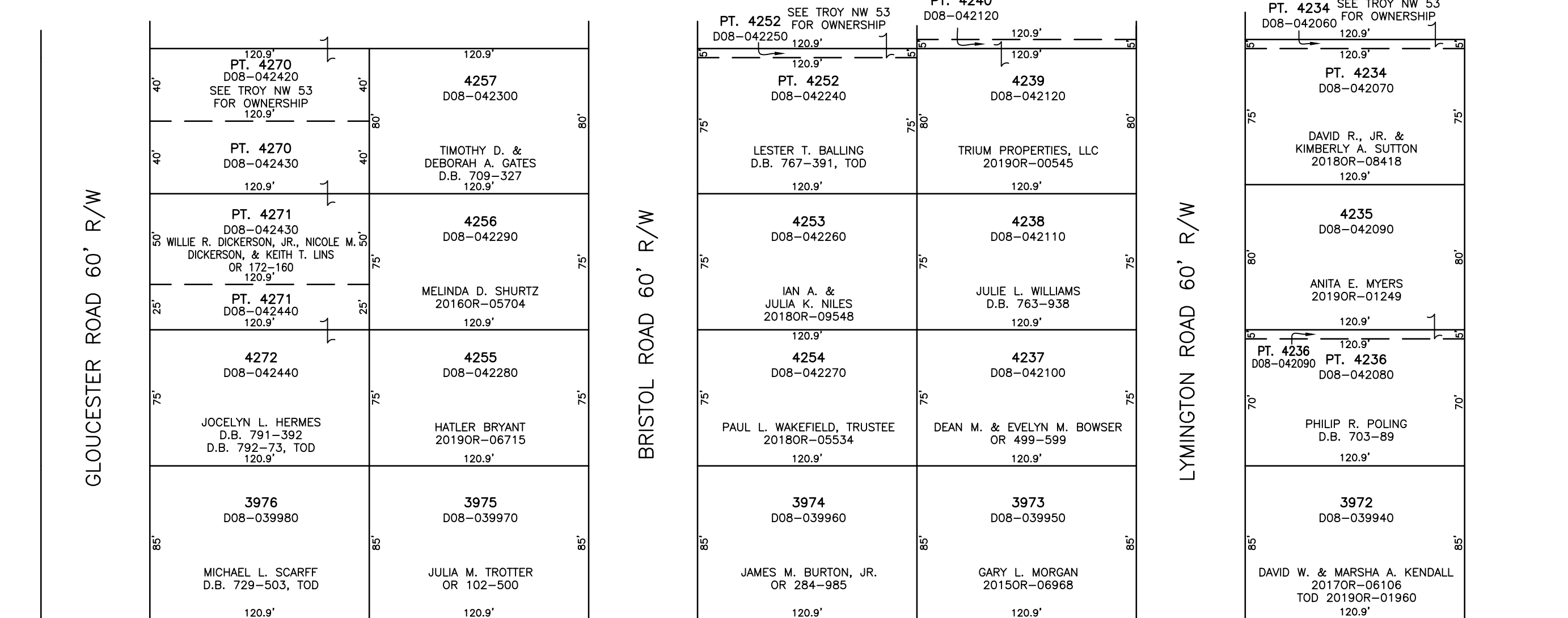
LINE LEGEND	
	Blow-up Boundary
	Property Line
	Lot Split Line
	Section Line
	Centerline
	Right-of-Way Line
	Corporation Line

SURVEY INDEX	
REC. 6-78	LOT 6-199
REC. 6-84	
REC. 6-89	

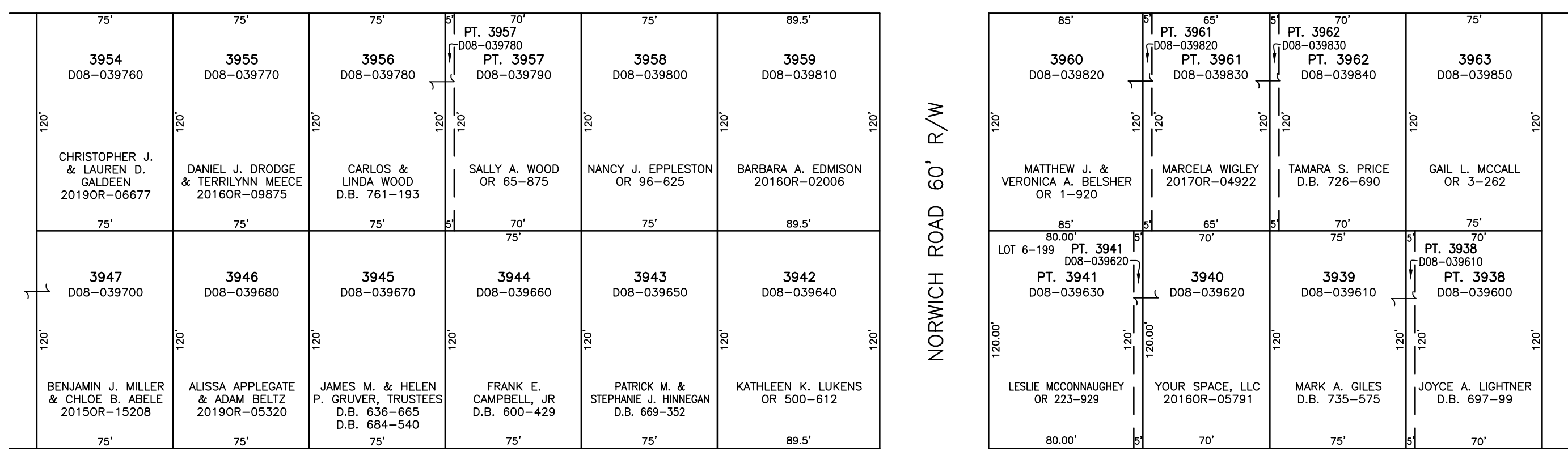
ANNEXATION
REC. 6-78

WESTBROOK SECTION 4
INLOTS 3938-3947,
3954-3963, & 3972-3976
REC. 6-89

WESTBROOK SECTION 5
INLOTS 4234-4239,
4252-4257, & 4270-4272
REC. 6-84



SURREY ROAD 60' R/W



CHELSEA ROAD 60' R/W

PREPARED BY: MIAMI COUNTY ENGINEER'S MAP DEPARTMENT
PAUL P. HUELSKAMP, P.E., P.S., COUNTY ENGINEER
DATE: FEBRUARY 6, 2018 CH
REVISED: June 21, 2019 DSTUMPF