

TROY

N.W. SECTION

PLAT NO 23  
Scale 1" = 50' Feet

SMDA NUMBER  
D08-NW023 - - - - -

60' R/W (?)

ST

MADISON

WASHINGTON

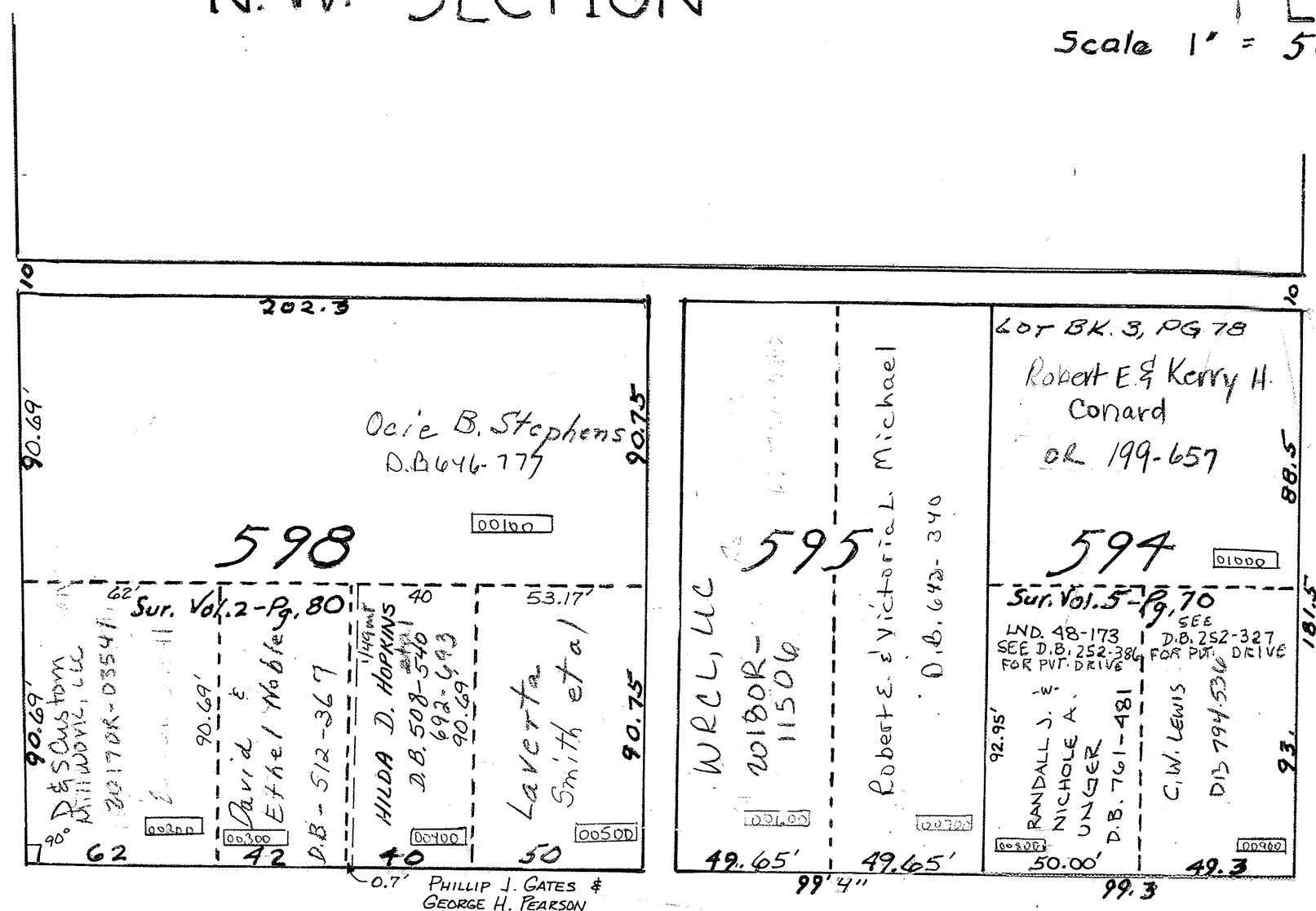
ST

66' R/W

ST. 60' R/W

HARRISON

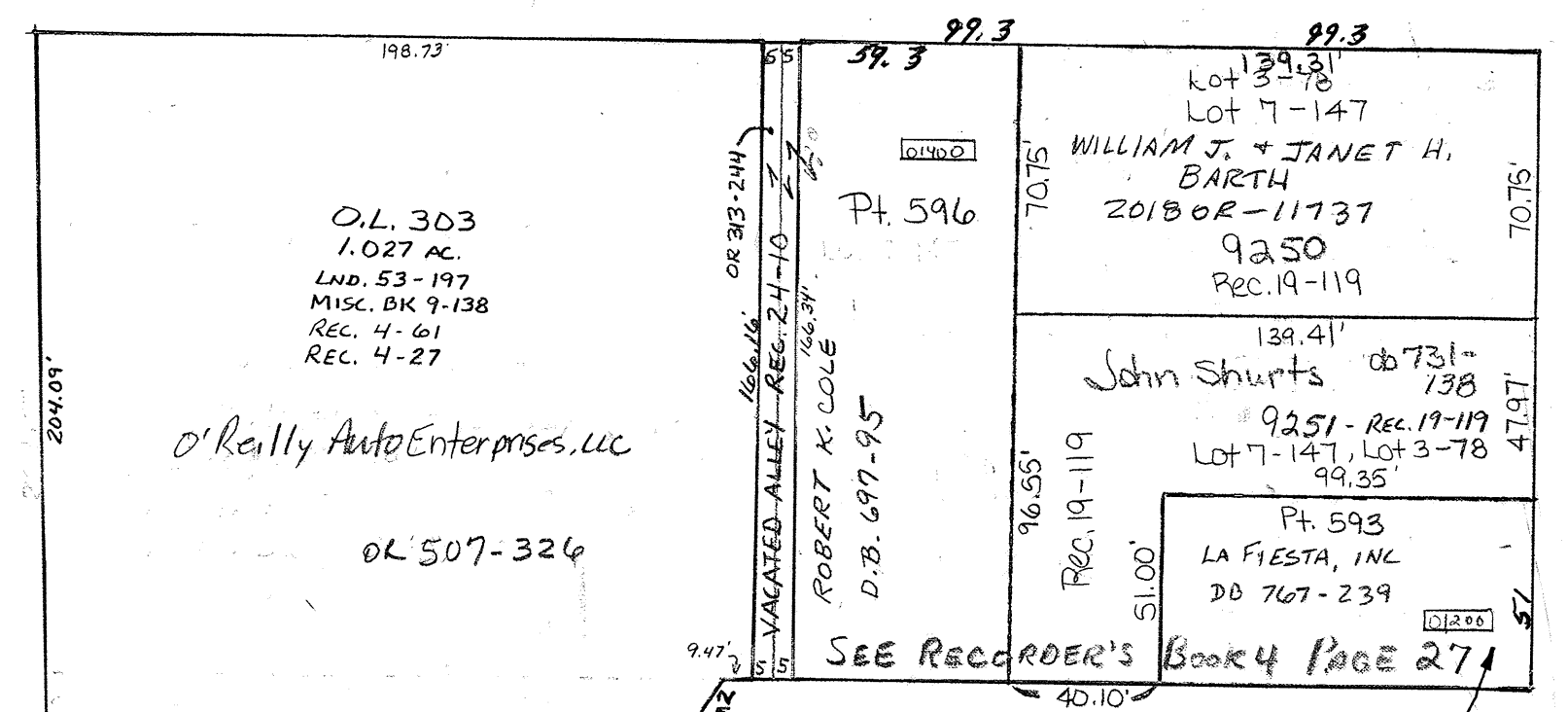
WATER ST.



Recorders Plats  
D.B. 20-Pg. 560

NOTE: THERE APPEARS TO BE SOME DISCREPANCY ABOUT THE WIDTH OF MADISON STREET. THE ORIGINAL PLATTED WIDTH IS 60 FEET; SUBSEQUENT PLATS AND SURVEYS INDICATE 50 FEET WIDTH.

ANDY SMITH MAP DEP'T. 3-7-95



MAIN ST.

80 R/W

398  
SEE TROY N.W. PLAT 24

REVISED 4-28-2013  
D. VENTURA