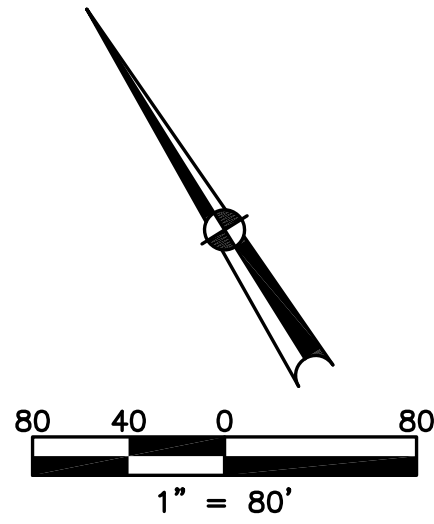


SECTION 13
TOWN 2
RANGE 9

CITY OF HUBER HEIGHTS MIAMI COUNTY, OHIO

PARCEL NUMBER
P48-_____

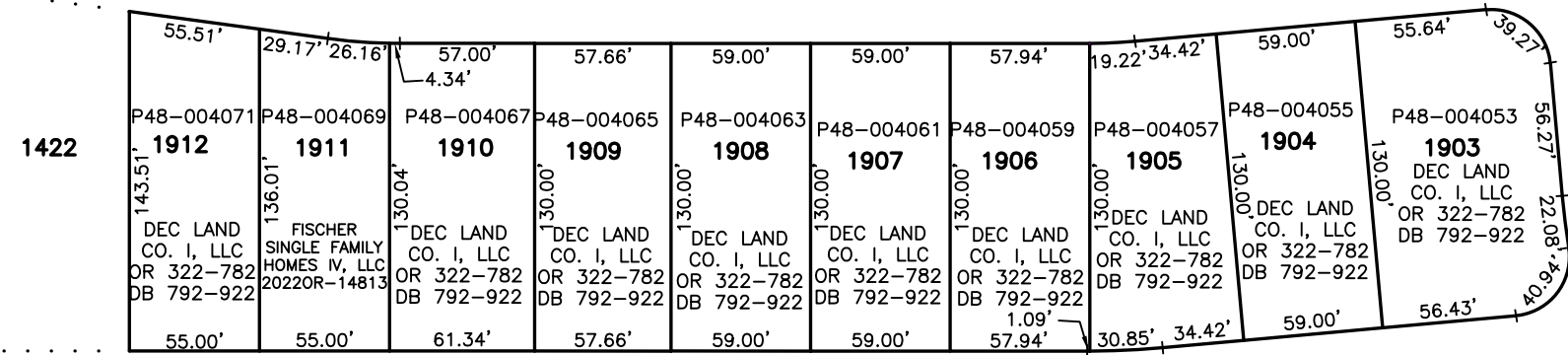
PLAT 60



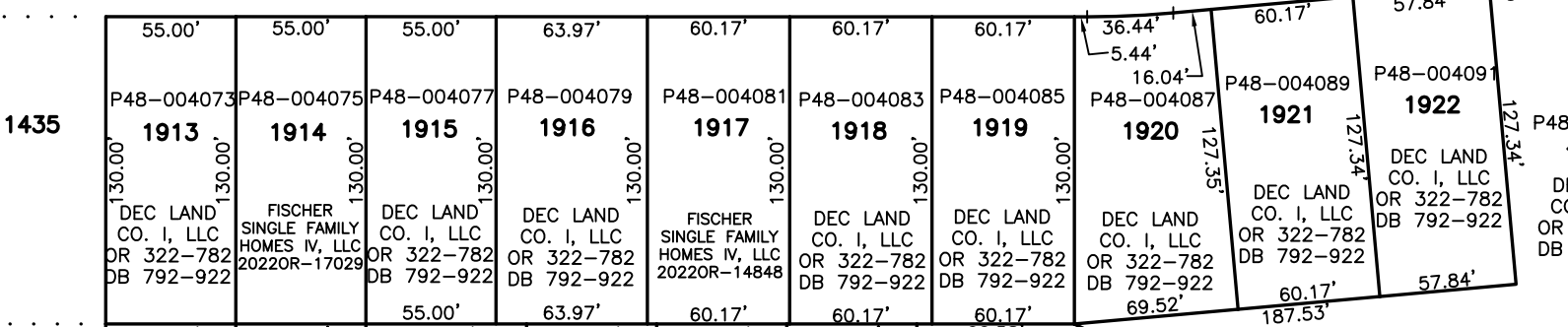
SEE PLAT 31

P48-002490 P48-003991
Pt 1080

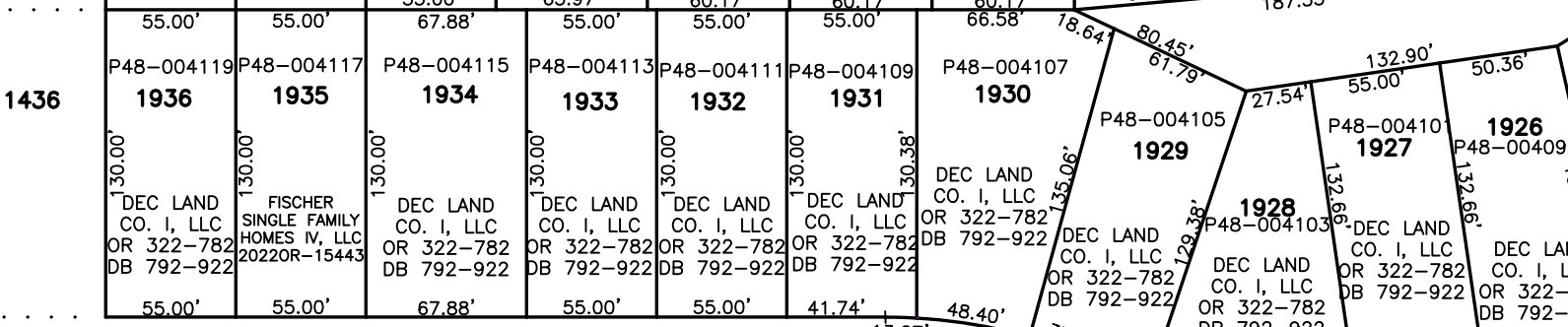
RED BUCKEYE DRIVE 60'



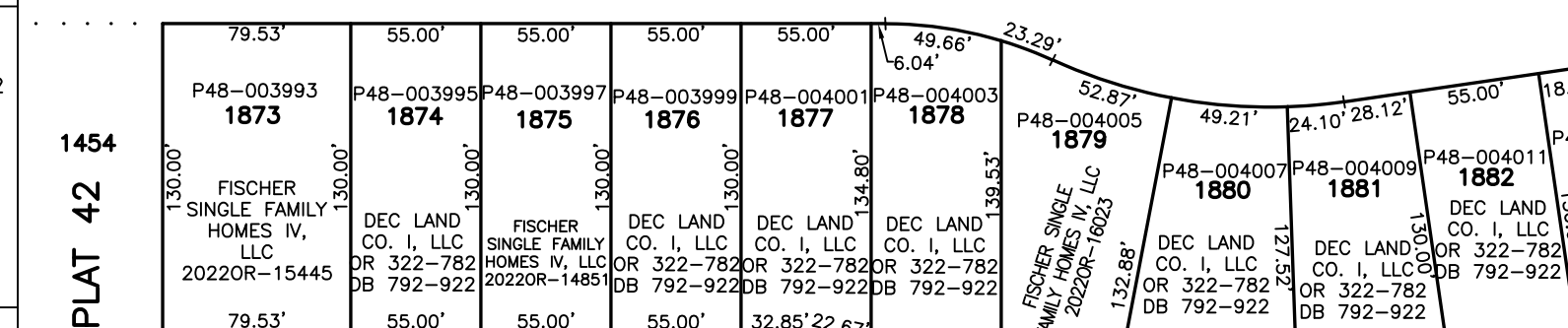
BIRCH CHERRY DRIVE 60'



SEE PLAT 42



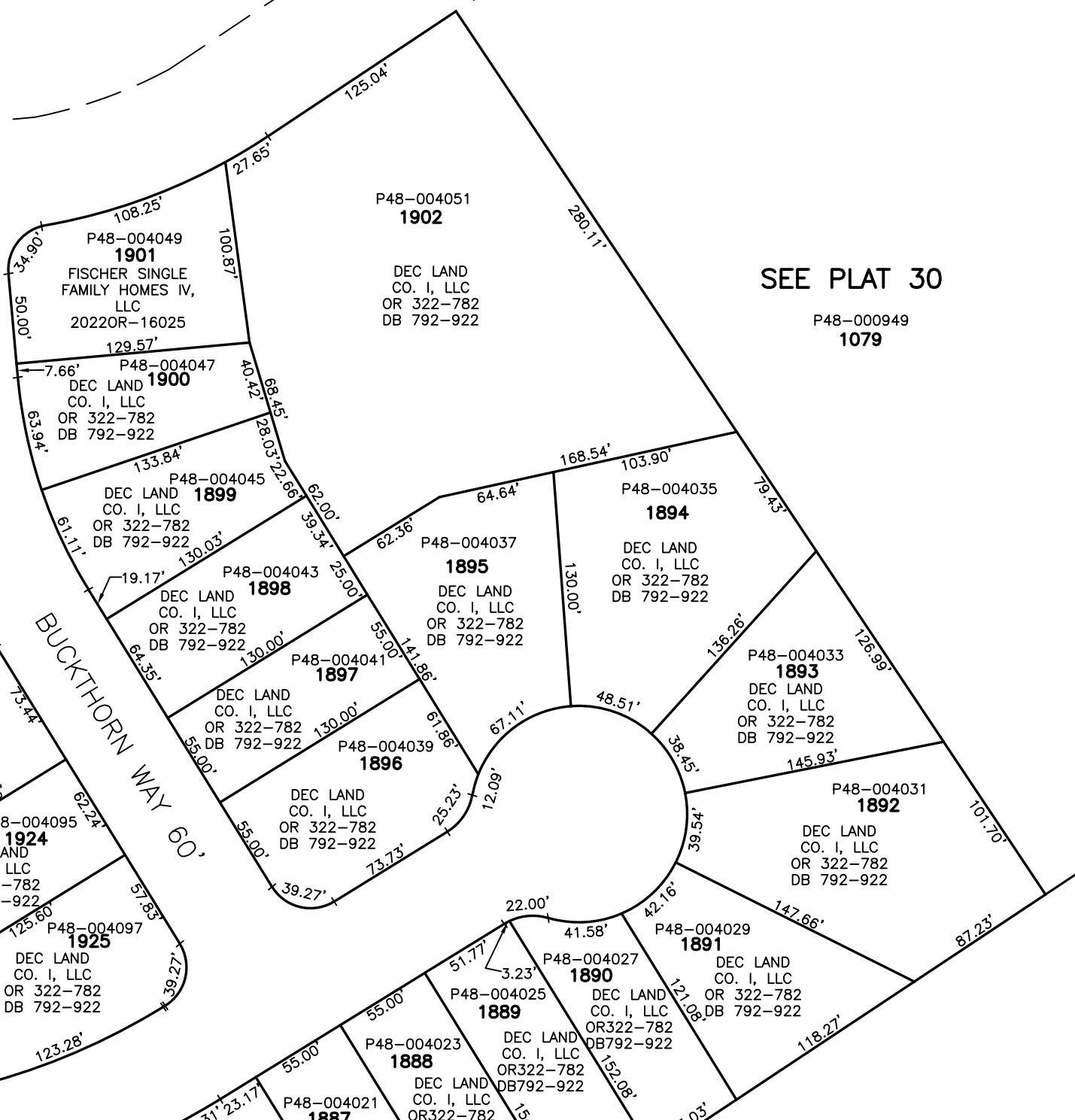
FORESTEDGE STREET 60'



SEE PLAT 42
1455

SEE PLAT 7

P48-000951
Pt 356



SEE PLAT 30

P48-000949
1079

ABBREVIATION LEGEND	
2014OR-00759	= RECORDER'S DOCUMENT NUMBER
OR 406-509	= OFFICIAL RECORD 406 PAGE 509
D.B. 613-172	= DEED BOOK 613, PAGE 172
REC. 15-72	= RECORDER'S PLAT BOOK 15, PAGE 72
LND. 33-15	= LAND SURVEY VOLUME 33, PAGE 15
LOT 19-12	= LOT SURVEY VOLUME 19, PAGE 12
R.R. 8-29	= ROAD RECORD VOLUME 8, PAGE 29
R/W	= RIGHT OF WAY
C	= CENTERLINE
AC.	= ACRES
TWP.	= TOWNSHIP
TR.	= TRACT
IL	= INLOT

LINE LEGEND	
	Blow-up Boundary
	Property Line
	Lot Split Line
	Section Line
	Centerline
	Right-of-Way Line
	Corporation Line

CARRIAGE TRAILS
SECTION 2, PHASE V
REC. 29-72
LOTS 1873-1936

PREPARED BY: MIAMI COUNTY ENGINEER'S MAP DEPARTMENT
PAUL P. HUELSKAMP, P.E., P.S., COUNTY ENGINEER

DATE: JULY 14, 2022 MSTORMS

REVISED: Dec. 02, 2022 MSTORMS