

ABBREVIATION LEGEND		
20140R-07759	=	RECORDER'S DOCUMENT NUMBER
OR 52-166	=	OFFICIAL RECORD 52 PAGE 166
D.B. 613-172	=	DEED BOOK 613, PAGE 172
REC. 15-72	=	RECORDER'S PLAT BOOK 15, PAGE 72
LND. 33-15	=	LAND SURVEY VOLUME 33, PAGE 15
LOT 19-12	=	LOT SURVEY VOLUME 19, PAGE 12
R.R. 8-29	=	ROAD RECORD VOLUME 8, PAGE 29
R/W	=	RIGHT OF WAY
CL	=	CENTERLINE
AC.	=	ACRES
TWP.	=	TOWNSHIP
TR.	=	TRACT
IL	=	INLOT

LINE LEGEND	
	Blow-up Boundary
	Property Line
	Lot Split Line
	Section Line
	Centerline
	Right-of-Way Line
	Corporation Line

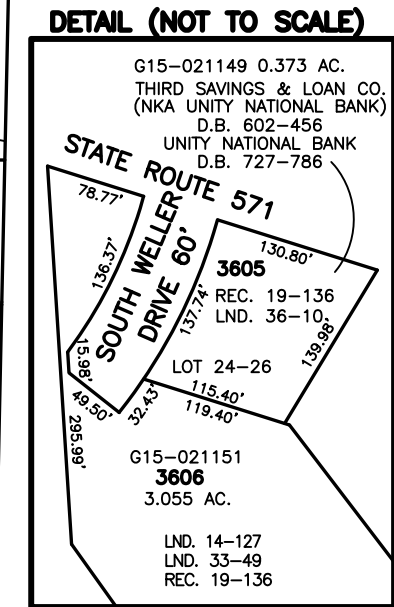
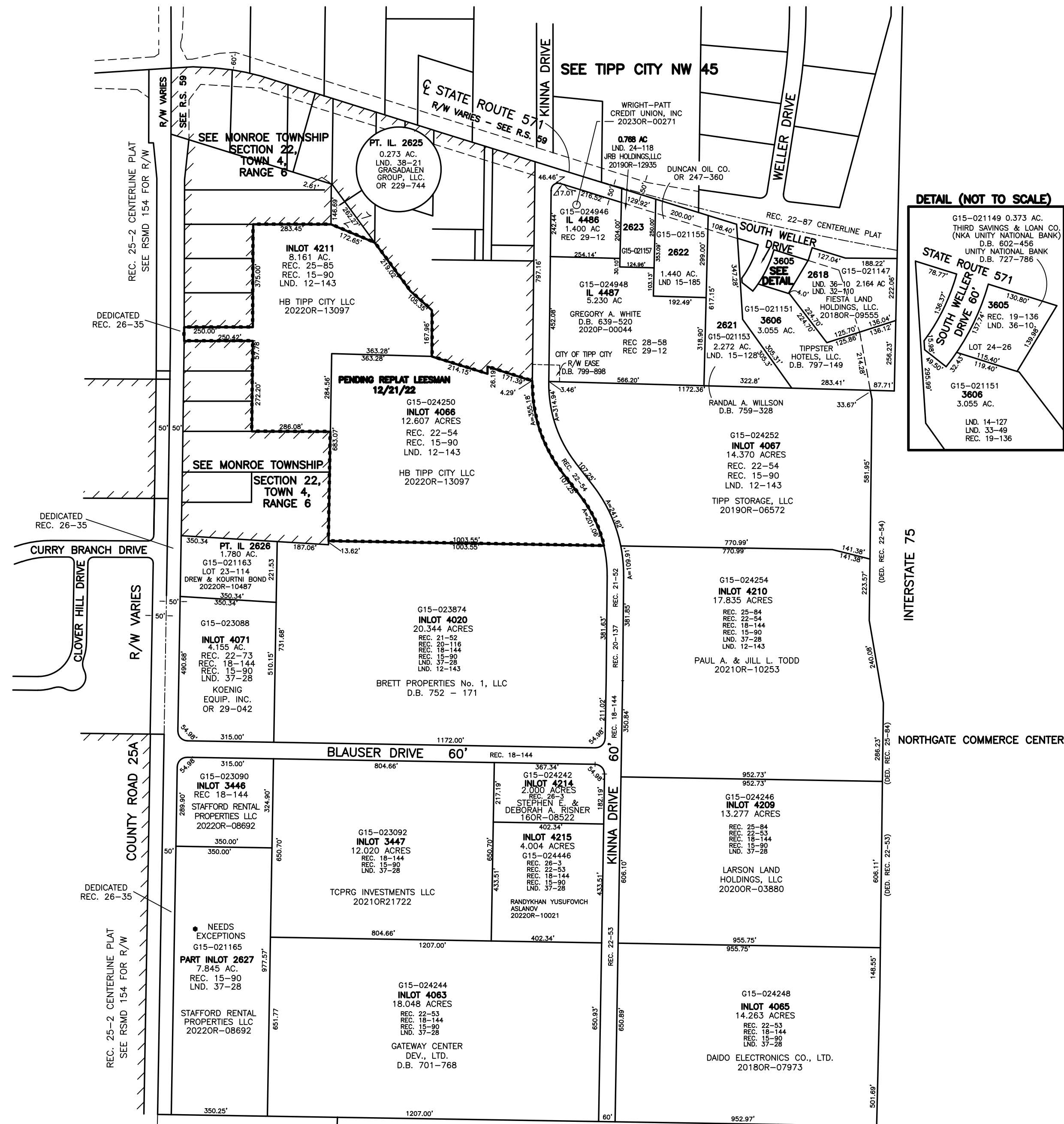
SURVEY INDEX		
LOT 23-114	REC. 15-90	LND. 12-143
LOT 24-26	REC. 18-144	LND. 15-128
	REC. 19-136	LND. 15-185
	REC. 20-116	LND. 24-118
	REC. 20-137	LND. 27-83
	REC. 21-52	LND. 33-49
	REC. 22-53	LND. 36-10
	REC. 22-54	LND. 37-28
	REC. 22-73	LND. 38-21
	REC. 22-97	
	REC. 25-2	
	RSMID 154	
	REC. 25-84	
	REC. 25-85	
	REC. 26-5	
	REC. 26-18	
	REC. 26-35	
	REC. 26-58	
	REC. 29-12	

ANNEXATION
LOTS 2618-2627
REC. 15-90

LOT 4438
RE-PLATTED TO
LOTS 4486 &
4487
REC. 29-12

PREPARED BY: MIAMI COUNTY ENGINEER'S MAP DEPARTMENT
PAUL P. HUELSKAMP, P.E., P.S., COUNTY ENGINEER
DATE: MARCH 28, 2001

REVISED: January 10, 2023 MSTORMS



SEE SW PLAT 50