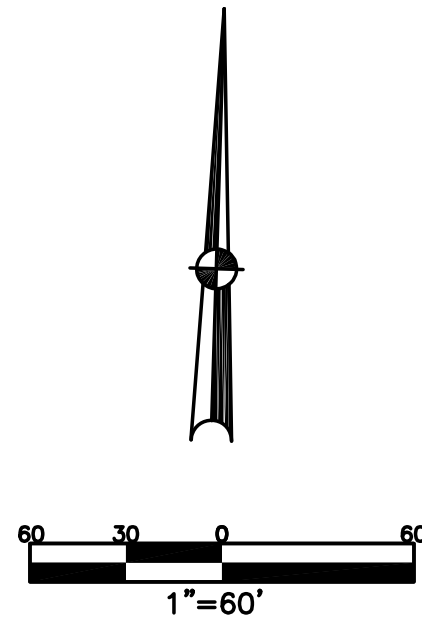


SECTION 22
TOWN 4
RANGE 6

CITY OF TIPP CITY
MIAMI COUNTY, OHIO

PARCEL ID NUMBER
G15-_____

PLAT SW 37



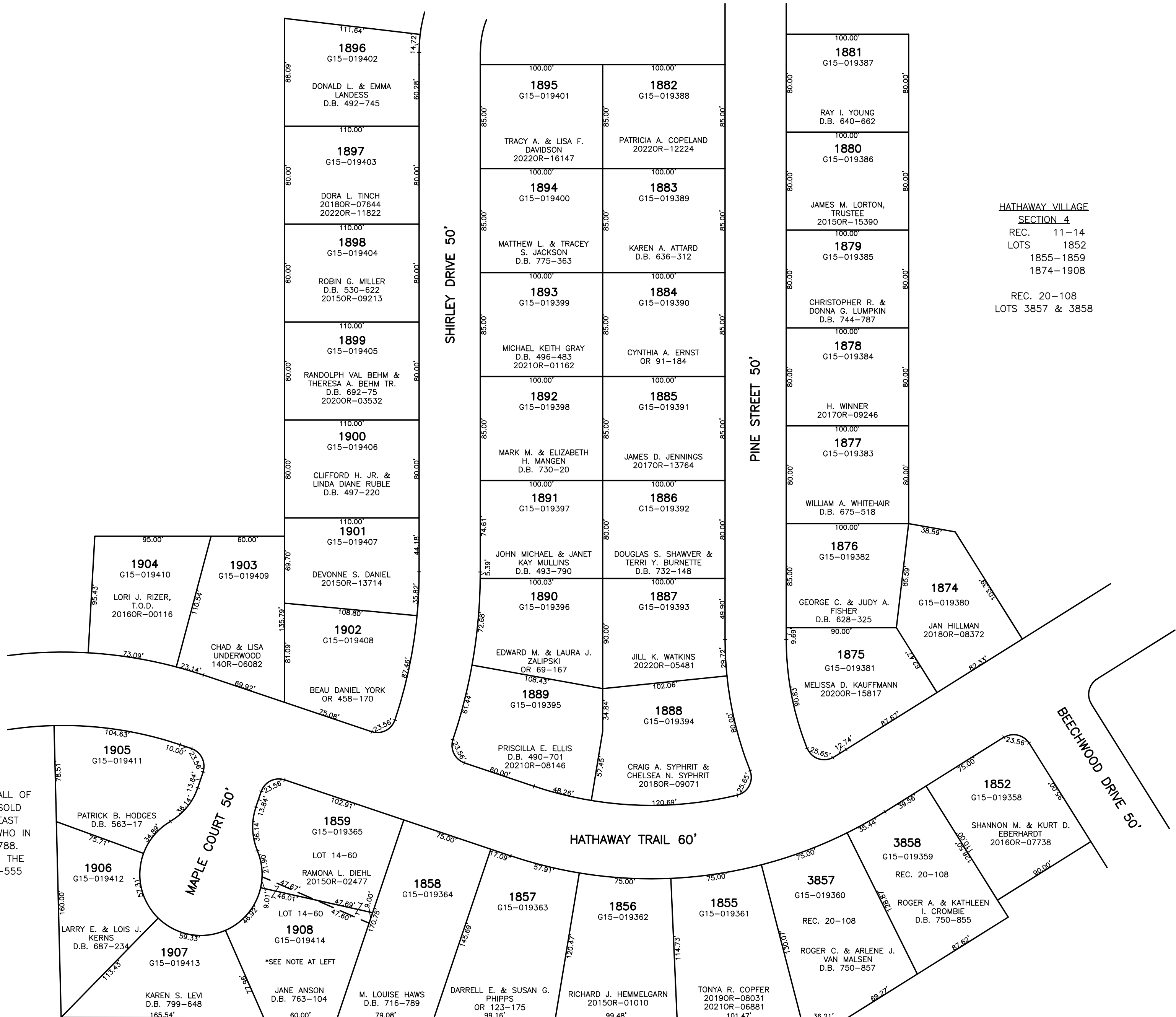
ABBREVIATION LEGEND	
2014OR-07759	= RECORDER'S DOCUMENT NUMBER
OR 406-509	= OFFICIAL RECORD 406 PAGE 509
D.B. 613-172	= DEED BOOK 613, PAGE 172
REC. 15-72	= RECORDER'S PLAT BOOK 15, PAGE 72
LND. 33-15	= LAND SURVEY VOLUME 33, PAGE 15
LOT 19-12	= LOT SURVEY VOLUME 19, PAGE 12
R.R. 8-29	= ROAD RECORD VOLUME 8, PAGE 29
R/W	= RIGHT OF WAY
C	= CENTERLINE
AC.	= ACRES
TWP.	= TOWNSHIP
TR.	= TRACT
IL	= INLOT

LINE LEGEND	
	Blow-up Boundary
	Property Line
	Lot Split Line
	Section Line
	Centerline
	Right-of-Way Line
	Corporation Line

SURVEY INDEX	
REC. 11-14	LOT 14-60
REC. 20-108	

*NOTE: D.B. 523-572 (WADE TO BALL) CONVEYS ALL OF INLOT 1908 TO BALL, BUT WADE HAD ALREADY SOLD THE TRIANGULAR SHAPED PART IN THE NORTH EAST CORNER OF 1908 IN D.B. 523-554 TO LUKENS WHO IN TURN SOLD TO RIESER & ESTEP IN D.B. 523-788. WADE ACQUIRED THE TRIANGULAR SHAPE PART IN THE S.W. PART OF 1859 FROM LUKENS IN D.B. 523-555 BUT DID NOT SELL TO BALL

PREPARED BY: MIAMI COUNTY ENGINEER'S MAP DEPARTMENT
PAUL P. HUELSKAMP, P.E., P.S., COUNTY ENGINEER
DATE: JULY 9, 2014 MB
REVISED: November 9, 2022 APALMER



HATHAWAY VILLAGE
SECTION 4
REC. 11-14
LOTS 1852
1855-1859
1874-1908

REC. 20-108
LOTS 3857 & 3858