

TIPP CITY SW

PLAT NO. 30

ORIG. STATE ROUTE 571

Lot 20-101 REC BK. 12-5

201908-04687

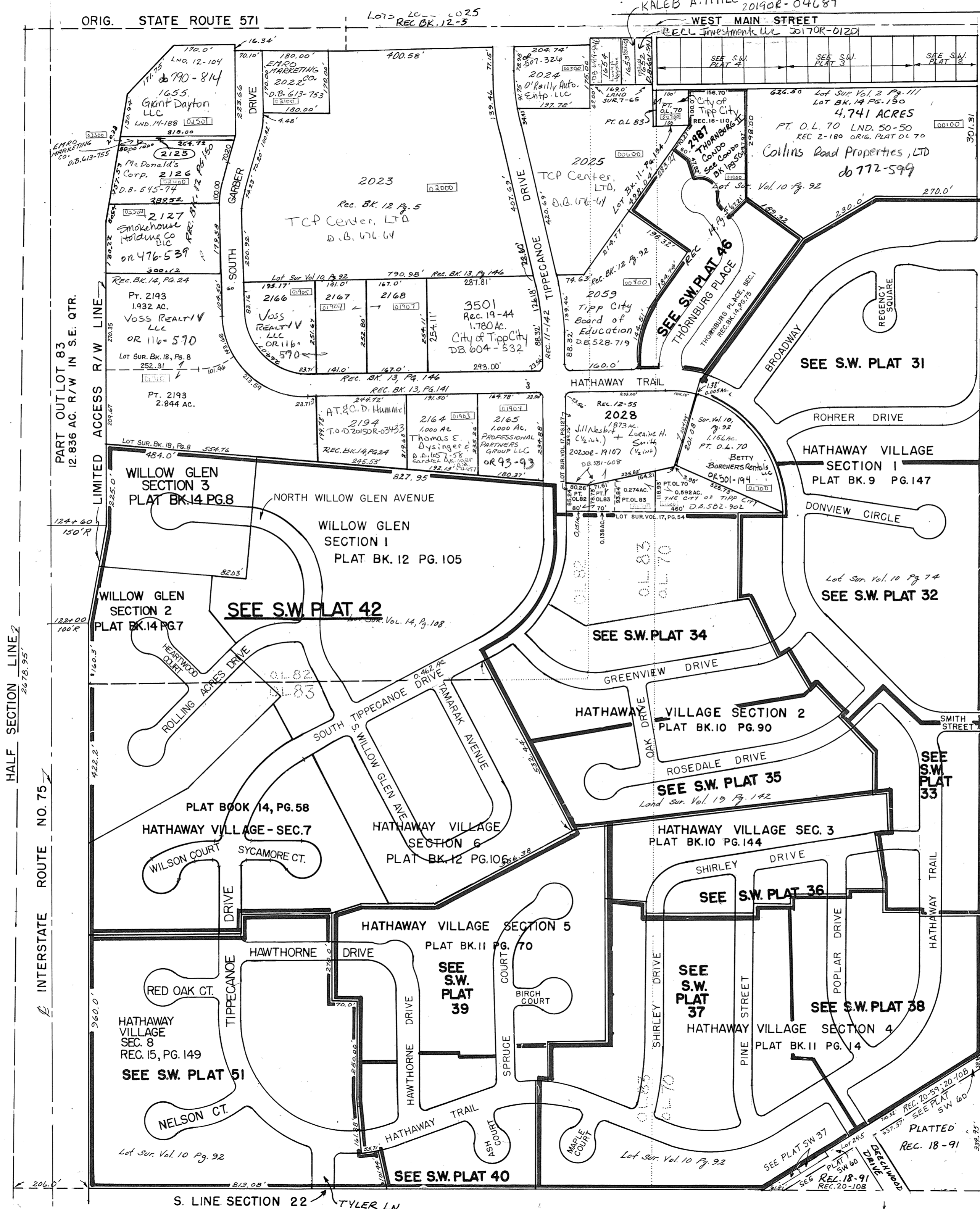
WEST MAIN STREET

RECL INVESTMENT LLC 20170R-01201

SCALE: 1" = 200'

SMDA NUMBER  
G15-SW030

ANNEXATION TO TIPP CITY  
PLAT BOOK 9 PAGE 138  
MIAMI COUNTY RECORDER'S  
PLATS



REVISED 7-13-2004  
D. VENTURA  
DER. ENR.  
REVISED 7-3-2006  
DGS

(PT. OL. 70)  
LND 28-200  
Lot 20-101  
Lot 22-125  
PLATTED  
REC. 18-91

SEE PLAT S.W. 45, SW 60