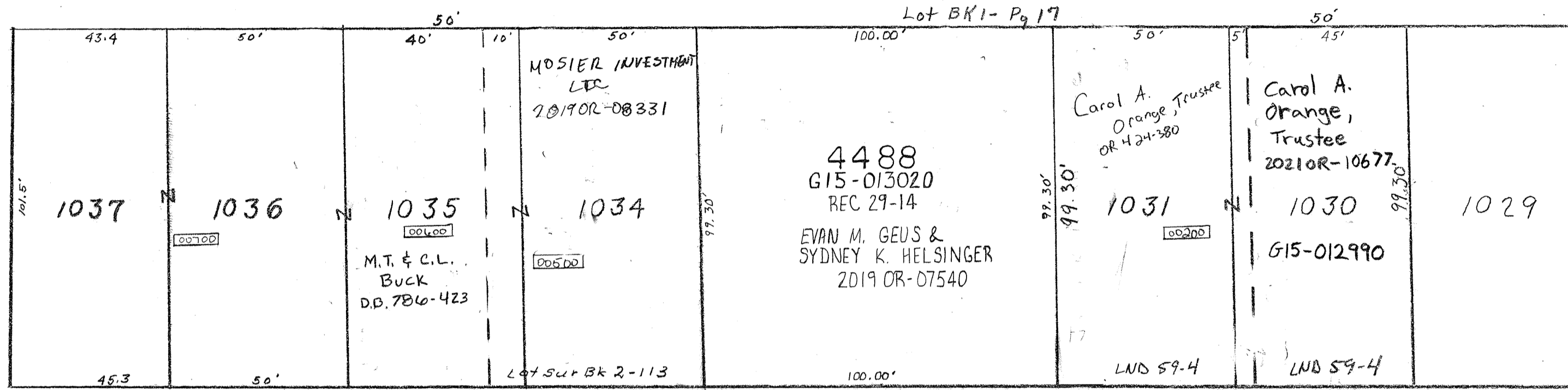


CITY OF TIPP CITY
MIAMI COUNTY

Scale-1-Inch 30 Feet PLAT SW 10

PARCEL NUMBER
G15- _____

HORTON AVE. 47'



Recorder's Plat BK 3 Pg. 88

O.L. 42

REC 29-14
REPLAT of IL 1032
& IL 1033 INTO
IL 4488

REVISED: 10-1-21