

Tipp City

S.E.

PLAT NO. 47
Scale - 1-Inch = 30 Feet

SMDA NUMBER
G15-SE047

See Plat 46
For this area

00100
.155 AC.
Lot 21-126
P. OL 52

Robert Jones
D.B. 669-995

00200
Ron Shaffard (BY DEED)
D.B. 648-254
P. OL 52

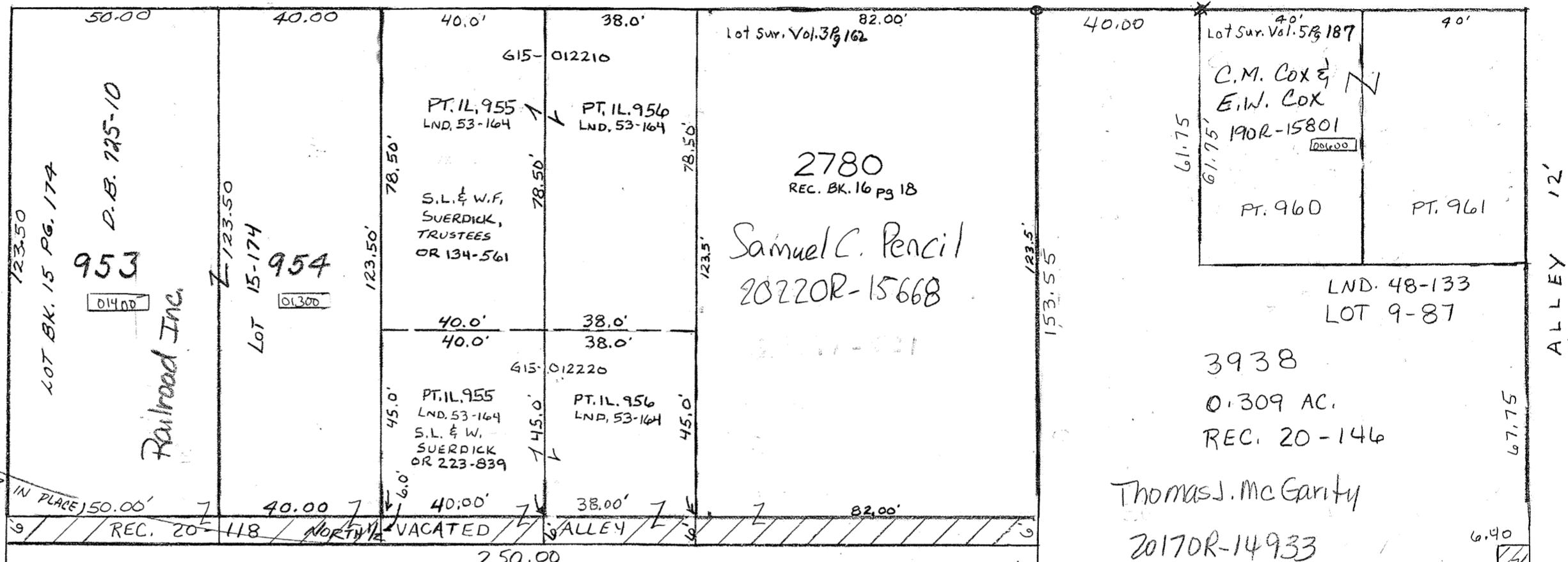
00300
951
Andrea N. & Marcos A. Galvez
2017-OR-07722

952
SEE S.E. 45 FOR
OWNERSHIP

33.00' 33.00'
Street Vacation
Rec. 17-49
SEE
SE 48
40.00' 40.00'
33.00' 33.00'

WILHELM STREET 50'

REC. BK. 3 pg 49



THIRD STREET 66'

B. & O. R. R.
APPROX. CENTERLINE OF
TRACK TO
POWERHOUSE
(NO LONGER IN PLACE)



SE 48

DEEDS CALL FOR THIS TO BE OUTLOT PROPERTY LINE D.B. 422-539 536-646 388-18

NOTE: SURVEYS CALL FOR THIS TO BE THE O.L. LINE, BUT IT DOESN'T MATCH ORIGINAL PLATTING OF OUTLOTS REC. BK. 2, Pg. 182

SEE S.E. 48

REVISED 10-31-2022

JAV