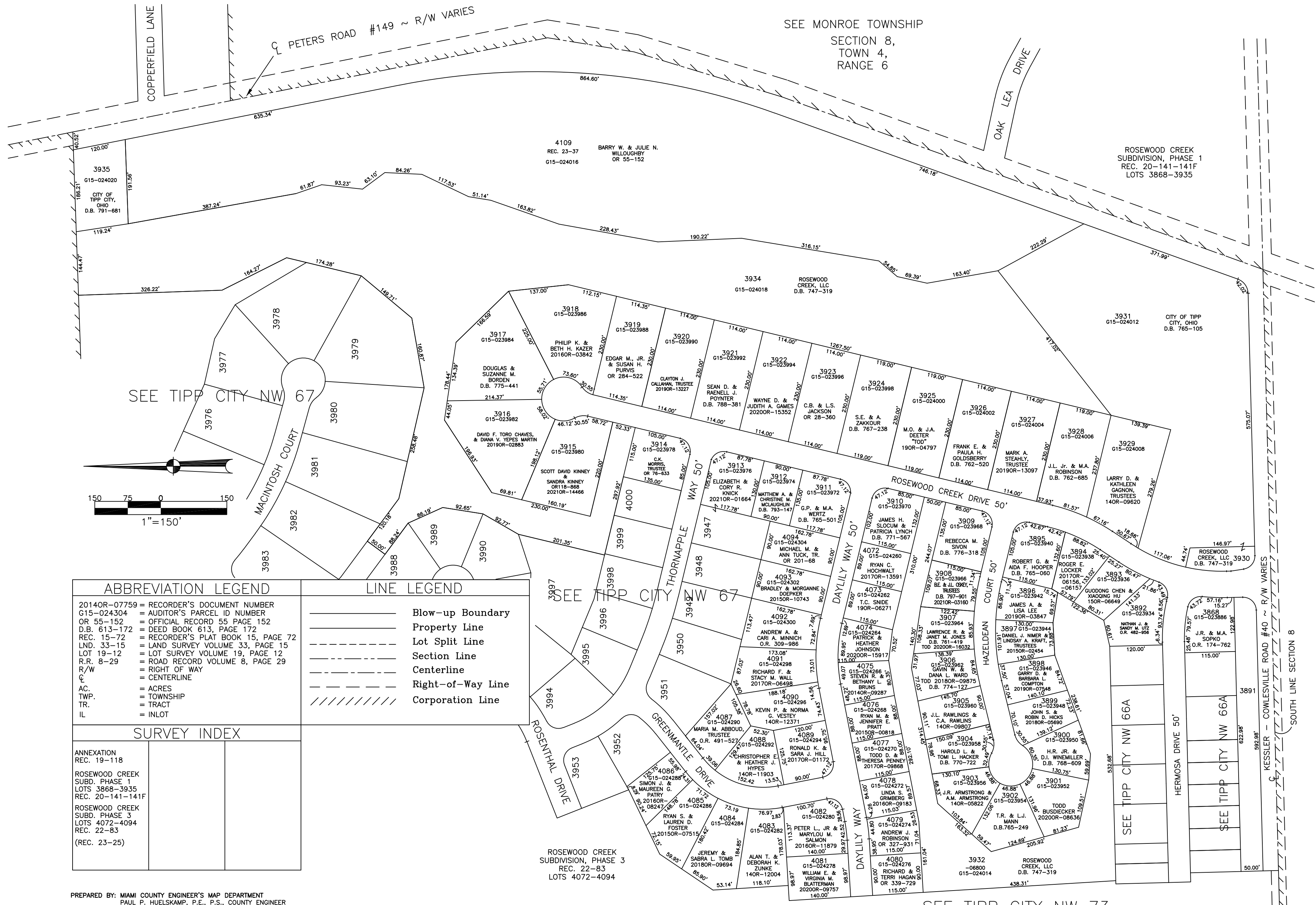


SECTION 8  
TOWN 4  
RANGE 6

CITY OF TIPP CITY  
MIAMI COUNTY, OHIO

PARCEL ID NUMBER  
G15-\_\_\_\_\_

PLAT NW 66



ABBREVIATION LEGEND		LINE LEGEND	
2014OR-07759	= RECORDER'S DOCUMENT NUMBER	———	Blow-up Boundary
G15-024304	= AUDITOR'S PARCEL ID NUMBER	———	Property Line
OR 55-152	= OFFICIAL RECORD 55 PAGE 152	-----	Lot Split Line
D.B. 613-172	= DEED BOOK 613, PAGE 172	-----	Section Line
REC. 15-72	= RECORDER'S PLAT BOOK 15, PAGE 72	-----	Centerline
LND. 33-15	= LAND SURVEY VOLUME 33, PAGE 15	-----	Right-of-Way Line
LOT 19-12	= LOT SURVEY VOLUME 19, PAGE 12	-----	Corporation Line
R.R. 8-29	= ROAD RECORD VOLUME 8, PAGE 29	-----	
R/W	= RIGHT OF WAY		
C	= CENTERLINE		
AC.	= ACRES		
TWP.	= TOWNSHIP		
TR.	= TRACT		
IL	= INLOT		

SURVEY INDEX	
ANNEXATION REC. 19-118	
ROSEWOOD CREEK SUBD. PHASE 1 LOTS 3868-3935 REC. 20-141-141F	
ROSEWOOD CREEK SUBD. PHASE 3 LOTS 4072-4094 REC. 22-83 (REC. 23-25)	

PREPARED BY: MIAMI COUNTY ENGINEER'S MAP DEPARTMENT  
PAUL P. HUELSKAMP, P.E., P.S., COUNTY ENGINEER  
DATE: MAY 2, 2005  
REVISED: August 19, 2021 CSHOUP

SEE TIPP CITY NW 73