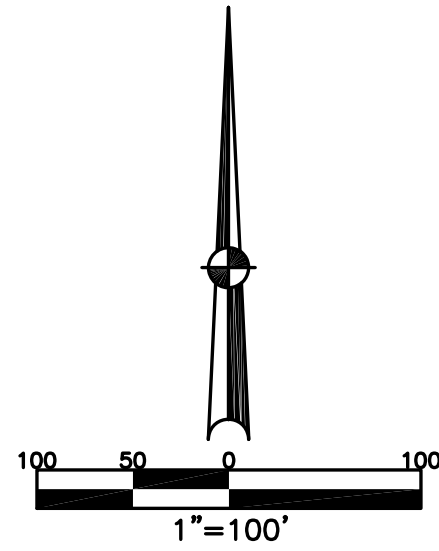


SECTION 15  
TOWN 4  
RANGE 6

CITY OF TIPP CITY  
MIAMI COUNTY, OHIO

PARCEL NUMBER  
G15-\_\_\_\_\_

PLAT NW 56



ABBREVIATION LEGEND		
2014OR-07759	=	RECORDER'S DOCUMENT NUMBER
OR 406-509	=	OFFICIAL RECORD 406 PAGE 509
D.B. 613-172	=	DEED BOOK 613, PAGE 172
REC. 15-72	=	RECORDER'S PLAT BOOK 15, PAGE 72
LND. 33-15	=	LAND SURVEY VOLUME 33, PAGE 15
LOT 19-12	=	LOT SURVEY VOLUME 19, PAGE 12
R.R. 8-29	=	ROAD RECORD VOLUME 8, PAGE 29
R/W	=	RIGHT OF WAY
C	=	CENTERLINE
AC.	=	ACRES
TWP.	=	TOWNSHIP
TR.	=	TRACT
IL	=	INLOT

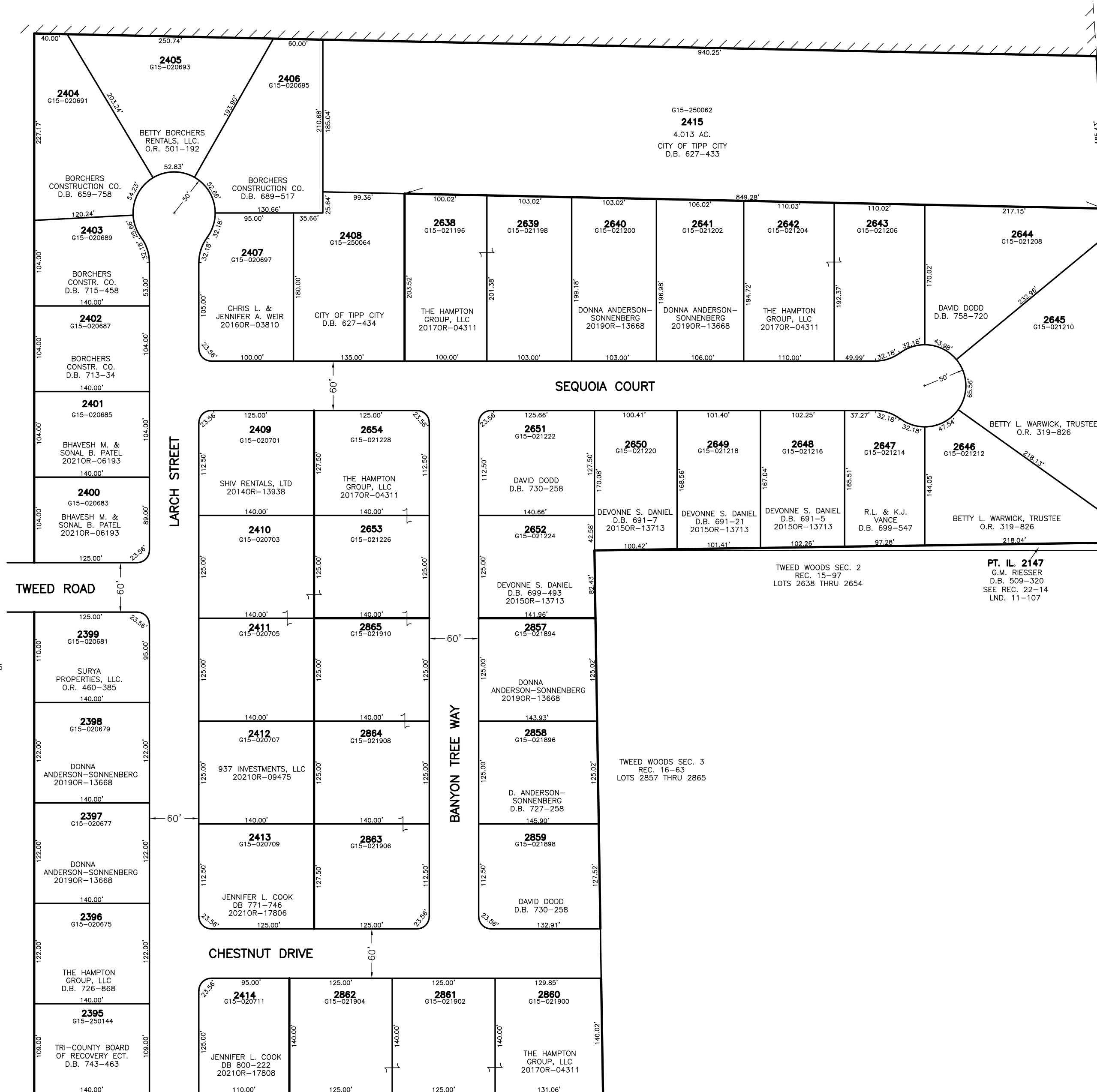
LINE LEGEND	
	Blow-up Boundary
	Property Line
	Lot Split Line
	Section Line
	Centerline
	Right-of-Way Line
	Corporation Line

SURVEY INDEX		
LOT 18-51		REC. 13-79 15-47 15-97 16-63

ANNEXATION  
REC. 13-79

TWEED WOODS SEC. 1  
REC. 15-47  
LOTS 2395 THRU 2415



INTERSTATE 75

PREPARED BY: MIAMI COUNTY ENGINEER'S MAP DEPARTMENT  
PAUL P. HUELSKAMP, P.E., P.S., COUNTY ENGINEER  
DATE: MAY 1993

REVISED: October 14, 2021MStorms