

MIAMI COUNTY, OHIO  
 CITY OF TIPP CITY  
 MONROE TOWNSHIP

N.E. PLAT 28

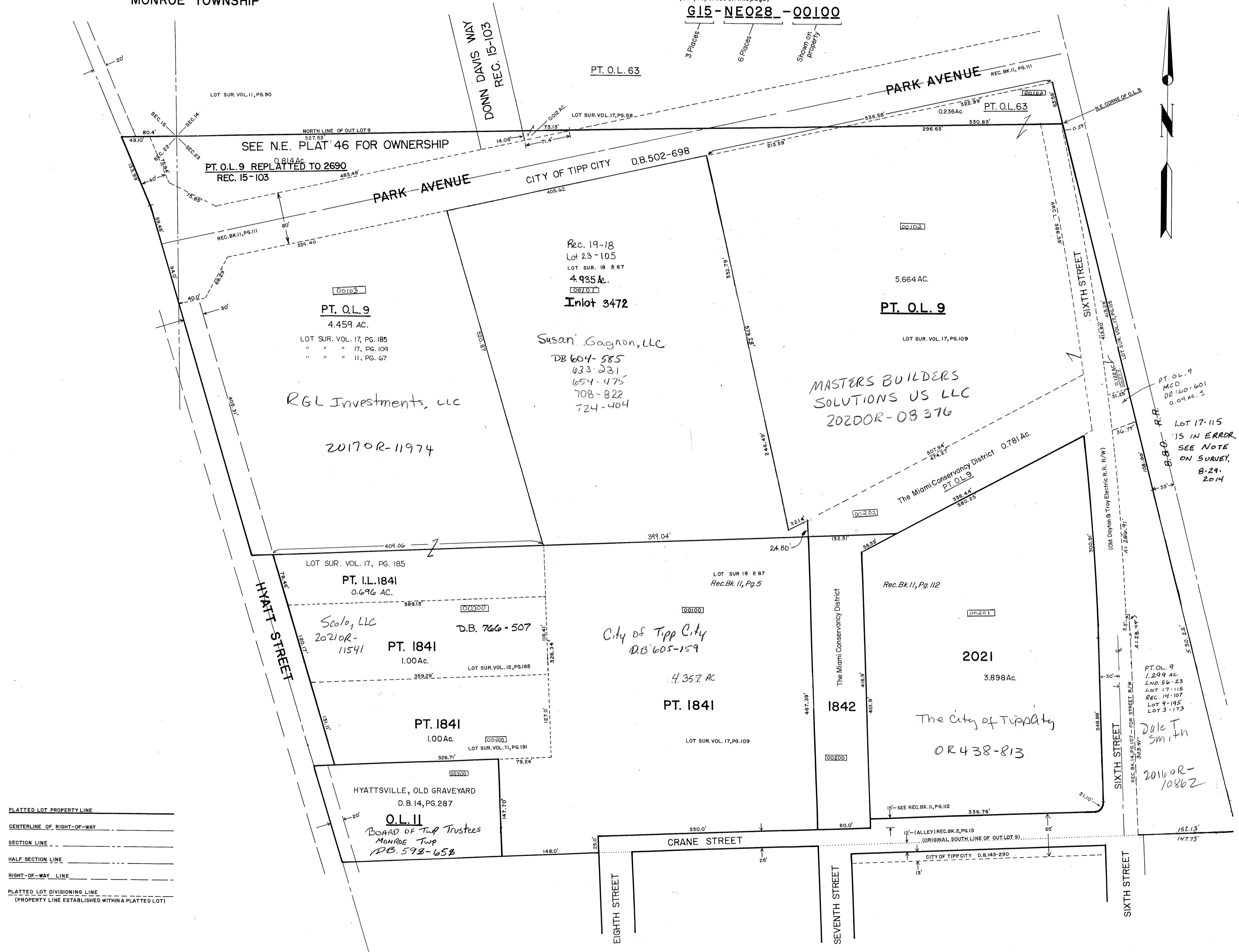
SCALE: 1" = 100'

AUDITOR'S SMDA NUMBER

(All properties on this page)

G15-NE028-00100

3 Places  
 6 Places  
 Shown on Property



PLATTED LOT PROPERTY LINE  
 CENTERLINE OF RIGHT-OF-WAY  
 SECTION LINE  
 HALF SECTION LINE  
 RIGHT-OF-WAY LINE  
 PLATTED LOT DIVISIONING LINE  
 (PROPERTY LINE ESTABLISHED WITHIN A PLATTED LOT)