

ABBREVIATION LEGEND	
OR 218-754	= OFFICIAL RECORD 218 PAGE 754
D.B. 613-172	= DEED BOOK 613, PAGE 172
REC. 15-72	= RECORDER'S PLAT BOOK 15, PAGE 72
LND. 33-15	= LAND SURVEY VOLUME 33, PAGE 15
LOT 19-12	= LOT SURVEY VOLUME 19, PAGE 12
R.R. 8-29	= ROAD RECORD VOLUME 8, PAGE 29
R/W	= RIGHT OF WAY
C	= CENTERLINE
AC.	= ACRES
TWP.	= TOWNSHIP
TR.	= TRACT
IL	= INLOT

LINE LEGEND	
	Blow-up Boundary
	Property Line
	Lot Split Line
	Section Line
	Centerline
	Right-of-Way Line
	Corporation Line

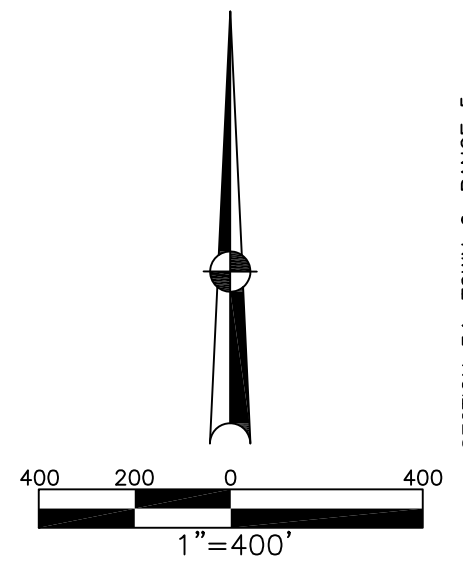
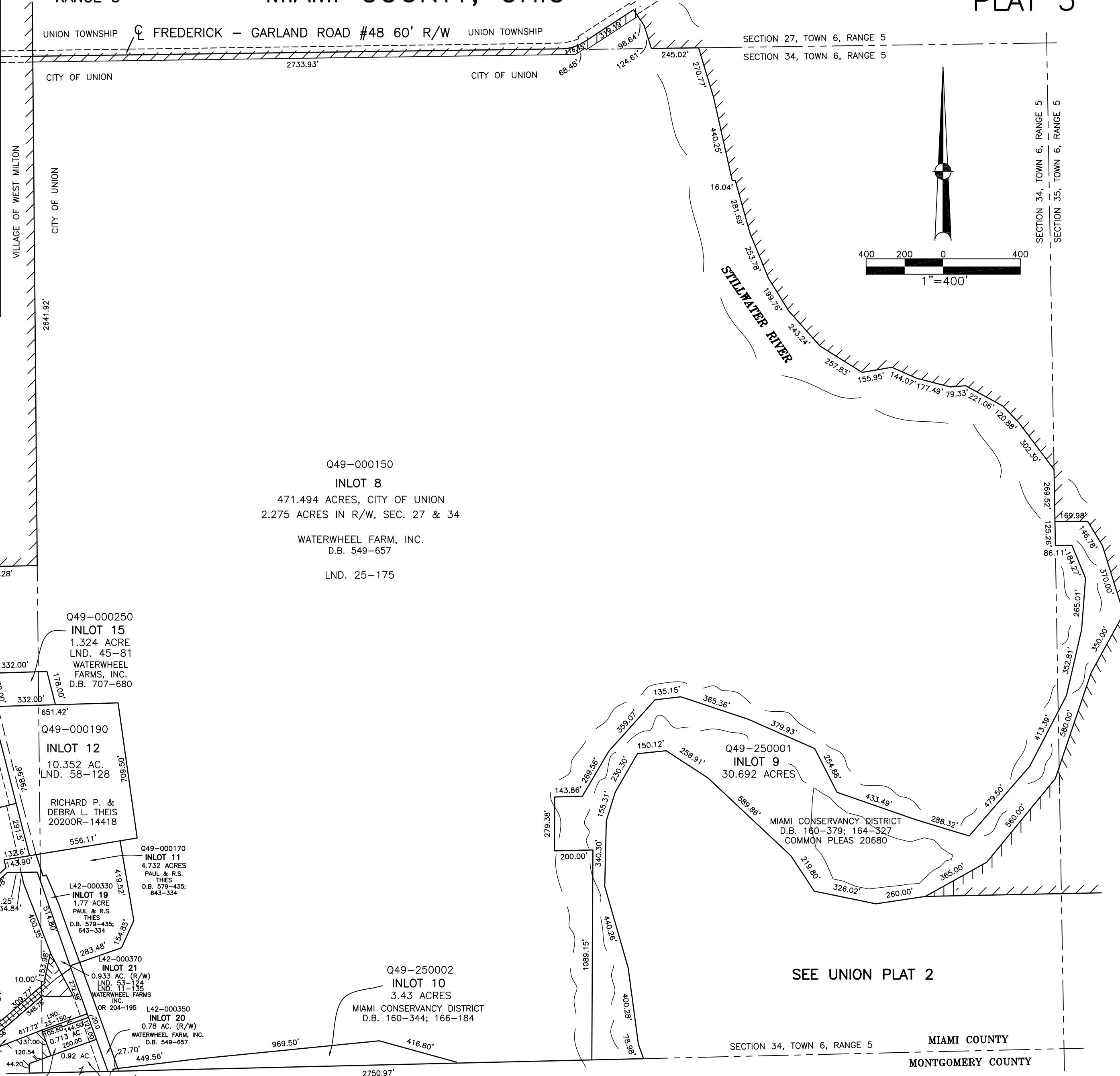
  

SURVEY INDEX	
LND 5-101	REC. 20-120
LND 7-167	REC. 21-14
LND 11-135	REC. 24-74
LND 23-150	
LND 25-175	
LND 53-124	
LND. 58-128	

SECTION 27, 34 & 35  
TOWN 6  
RANGE 5

CITY OF UNION  
MIAMI COUNTY, OHIO

PLAT 3



**ANNEXATIONS**  
REC. BK. 20 PG. 120  
LOTS 8-15  
  
REC. BK. 21 PG. 14A  
LOTS 16-21  
  
REC. BK. 24 PG. 74  
LOT 22

Q49-000150  
**INLOT 8**  
471.494 ACRES, CITY OF UNION  
2.275 ACRES IN R/W, SEC. 27 & 34  
  
WATERWHEEL FARM, INC.  
D.B. 549-657  
  
LND. 25-175

Q49-000250  
**INLOT 15**  
1.324 ACRE  
LND. 45-81  
WATERWHEEL FARM, INC.  
D.B. 707-680

Q49-000190  
**INLOT 12**  
10.352 AC.  
LND. 58-128  
  
RICHARD P. &  
DEBRA L. THEIS  
2020OR-14418

Q49-000170  
**INLOT 11**  
4.732 ACRES  
PAUL & R.S. THEIS  
D.B. 579-435;  
643-334

Q49-250002  
**INLOT 10**  
3.43 ACRES  
MIAMI CONSERVANCY DISTRICT  
D.B. 160-344; 166-184

Q49-250001  
**INLOT 9**  
30.692 ACRES  
  
MIAMI CONSERVANCY DISTRICT  
D.B. 160-379; 164-327  
COMMON PLEAS 20680

L42-000270  
**INLOT 16**  
2.00 AC (2.356 AC; 0.096 AC)  
ELLIOT-MOTE MEM. POST VW  
D.B. 495-615; 620-680

L42-000290  
**INLOT 17**  
ANTHONY & KARA PHILLIPS  
2017OR-05631

L42-000310  
**INLOT 18**  
CW MARKET HOLDINGS, LLC  
2020OR-00598

PREPARED BY: MIAMI COUNTY ENGINEER'S MAP DEPARTMENT  
PAUL P. HEULSKAMP, P.E., P.S., COUNTY ENGINEER  
DATE: FEBRUARY 5, 2009 DGS  
REVISED: JANUARY 14, 2020 A.S.

NORTH MONTGOMERY COUNTY LINE ROAD WEST

SECTION 34, TOWN 6, RANGE 5  
MIAMI COUNTY  
MONTGOMERY COUNTY