

Gregory A. & Linda K. Baker  
OR 294-753

Curtis & Patricia Heslep  
D.B. 565-713

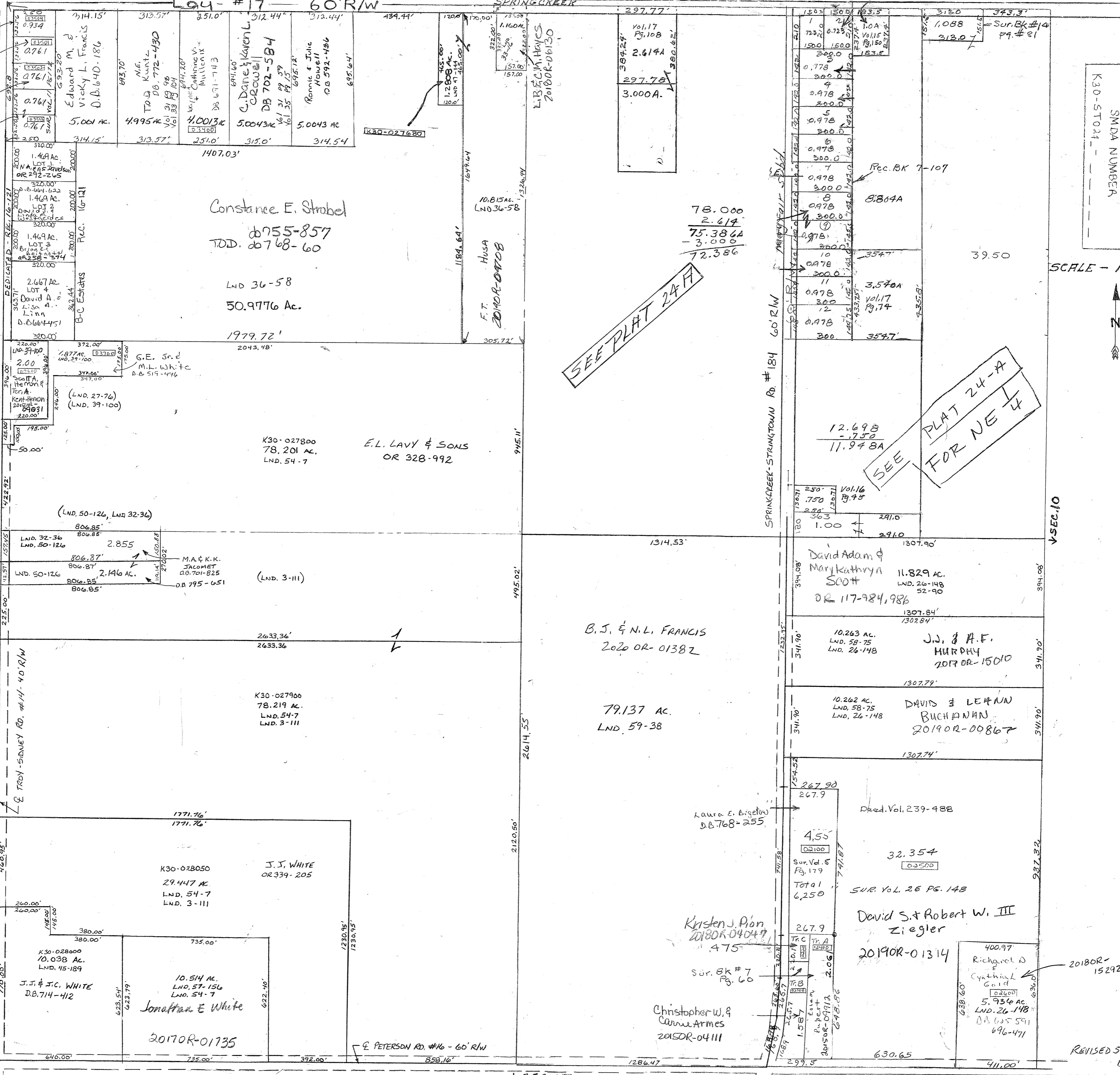
F.E. & K.D. Hutchinson  
2016OR-04738

Harold & Susan J. Brumfield  
D.B. 573-312

- QUARTER
- Vol 11 Pg 172
  - Vol 31 Pg 59
  - Vol 31 Pg 98
  - Vol 33 Pg 104
  - Vol 35 Pg 15
  - Vol 47 Pg 144

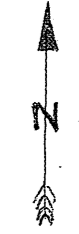
- SURVEYS
- Vol 14 Pg 81 - NE CORNER
  - Vol 15 Pg 150 - N.E. PT. N.E.
  - Vol 16 Pg 45 - S. Cent. Pt. N.E.
  - Vol 17 Pg 74 - E. Cent. Pt. N.E.
  - Vol 17 Pg 108 - N.W. Pt. N.E.

- SURVEYS
- Vol 1 Pg 209 - Whole
  - Vol 3 Pg 111 - SW 1/4
  - Vol 5 Pg 179 - Cent. Pt. SE
  - Vol 7 Pg 60 - S. Cent. Pt. SE
  - Vol 11 Pg 172 - NW Cor. NW
  - Vol 12 Pg 68 - S. Cent. Pt. NE
  - Sub Div 1 Pg 120 - Cent. Pt. NE



SMDA NUMBER  
K30-ST024

SCALE - 1" = 330'



V-SEC. 10

REVISED 5-9-2019  
D. VENTURA