

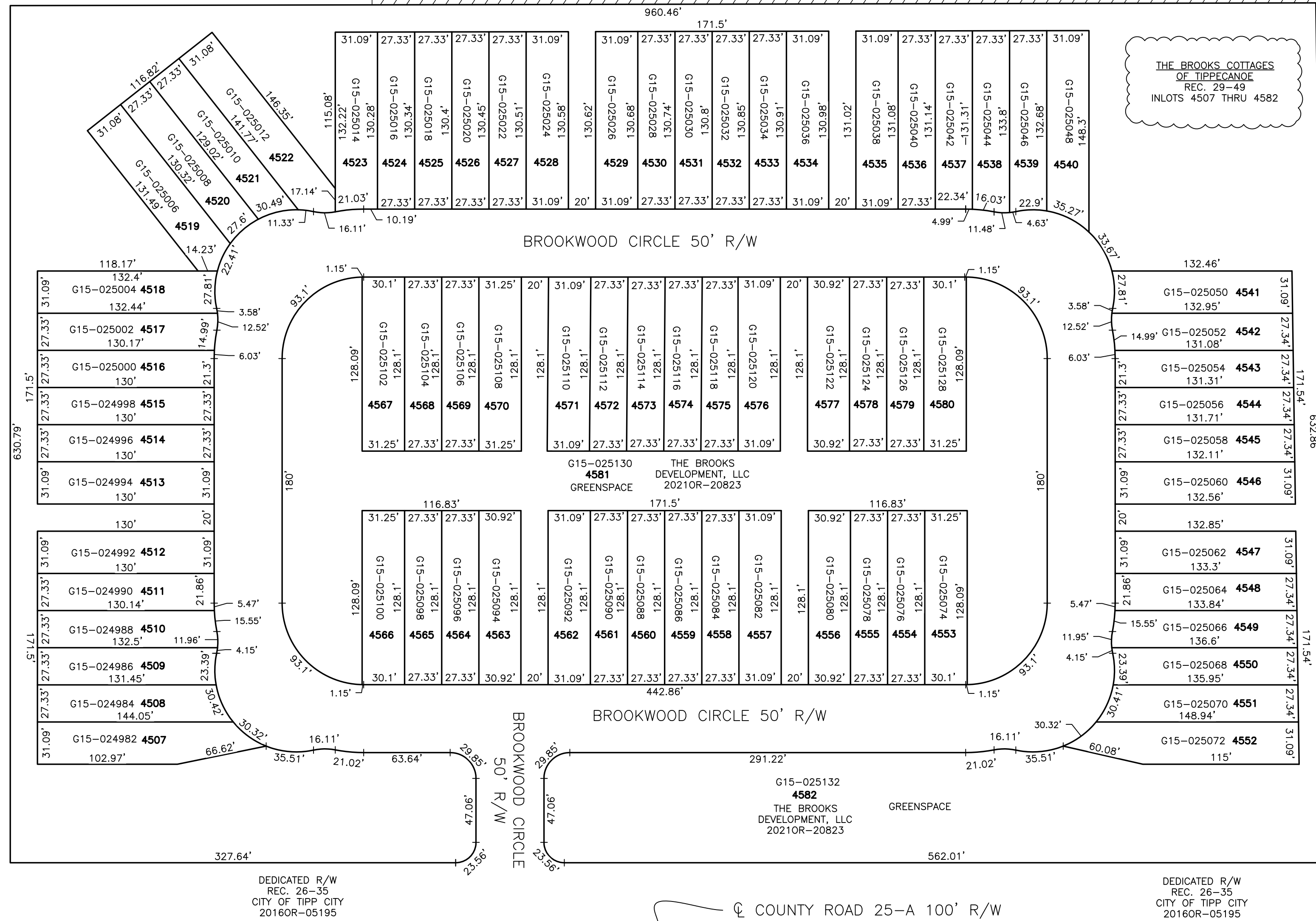
SECTION 28
TOWN 4
RANGE 6

CITY OF TIPP CITY MIAMI COUNTY, OHIO

PARCEL NUMBER
G15-_____

PLAT SW 72

SEE TIPP CITY
PLAT SW 63



IL #	OWNERSHIP
4507	THE BROOKS DEVELOPMENT, LLC 20210R-20823
4508	THE BROOKS DEVELOPMENT, LLC 20210R-20823
4509	THE BROOKS DEVELOPMENT, LLC 20210R-20823
4510	THE BROOKS DEVELOPMENT, LLC 20210R-20823
4511	THE BROOKS DEVELOPMENT, LLC 20210R-20823
4512	THE BROOKS DEVELOPMENT, LLC 20210R-20823
4513	THE BROOKS DEVELOPMENT, LLC 20210R-20823
4514	THE BROOKS DEVELOPMENT, LLC 20210R-20823
4515	THE BROOKS DEVELOPMENT, LLC 20210R-20823
4516	THE BROOKS DEVELOPMENT, LLC 20210R-20823
4517	THE BROOKS DEVELOPMENT, LLC 20210R-20823
4518	THE BROOKS DEVELOPMENT, LLC 20210R-20823
4519	THE BROOKS DEVELOPMENT, LLC 20210R-20823
4520	THE BROOKS DEVELOPMENT, LLC 20210R-20823
4521	THE BROOKS DEVELOPMENT, LLC 20210R-20823
4522	THE BROOKS DEVELOPMENT, LLC 20210R-20823
4523	THE BROOKS DEVELOPMENT, LLC 20210R-20823
4524	THE BROOKS DEVELOPMENT, LLC 20210R-20823
4525	THE BROOKS DEVELOPMENT, LLC 20210R-20823
4526	THE BROOKS DEVELOPMENT, LLC 20210R-20823
4527	THE BROOKS DEVELOPMENT, LLC 20210R-20823
4528	THE BROOKS DEVELOPMENT, LLC 20210R-20823
4529	THE BROOKS DEVELOPMENT, LLC 20210R-20823
4530	THE BROOKS DEVELOPMENT, LLC 20210R-20823
4531	THE BROOKS DEVELOPMENT, LLC 20210R-20823
4532	THE BROOKS DEVELOPMENT, LLC 20210R-20823
4533	THE BROOKS DEVELOPMENT, LLC 20210R-20823
4534	THE BROOKS DEVELOPMENT, LLC 20210R-20823
4535	THE BROOKS DEVELOPMENT, LLC 20210R-20823
4536	THE BROOKS DEVELOPMENT, LLC 20210R-20823
4537	THE BROOKS DEVELOPMENT, LLC 20210R-20823
4538	THE BROOKS DEVELOPMENT, LLC 20210R-20823
4539	THE BROOKS DEVELOPMENT, LLC 20210R-20823
4540	THE BROOKS DEVELOPMENT, LLC 20210R-20823
4541	THE BROOKS DEVELOPMENT, LLC 20210R-20823
4542	THE BROOKS DEVELOPMENT, LLC 20210R-20823
4543	THE BROOKS DEVELOPMENT, LLC 20210R-20823
4544	THE BROOKS DEVELOPMENT, LLC 20210R-20823
4545	THE BROOKS DEVELOPMENT, LLC 20210R-20823
4546	THE BROOKS DEVELOPMENT, LLC 20210R-20823
4547	THE BROOKS DEVELOPMENT, LLC 20210R-20823
4548	THE BROOKS DEVELOPMENT, LLC 20210R-20823
4549	THE BROOKS DEVELOPMENT, LLC 20210R-20823
4550	THE BROOKS DEVELOPMENT, LLC 20210R-20823
4551	THE BROOKS DEVELOPMENT, LLC 20210R-20823
4552	H & M WILDER 20220R-16210
4553	THE BROOKS DEVELOPMENT, LLC 20210R-20823
4554	THE BROOKS DEVELOPMENT, LLC 20210R-20823
4555	THE BROOKS DEVELOPMENT, LLC 20210R-20823
4556	THE BROOKS DEVELOPMENT, LLC 20210R-20823
4557	THE BROOKS DEVELOPMENT, LLC 20210R-20823
4558	THE BROOKS DEVELOPMENT, LLC 20210R-20823
4559	THE BROOKS DEVELOPMENT, LLC 20210R-20823
4560	THE BROOKS DEVELOPMENT, LLC 20210R-20823
4561	THE BROOKS DEVELOPMENT, LLC 20210R-20823
4562	THE BROOKS DEVELOPMENT, LLC 20210R-20823
4563	THE BROOKS DEVELOPMENT, LLC 20210R-20823
4564	THE BROOKS DEVELOPMENT, LLC 20210R-20823
4565	THE BROOKS DEVELOPMENT, LLC 20210R-20823
4566	THE BROOKS DEVELOPMENT, LLC 20210R-20823
4567	THE BROOKS DEVELOPMENT, LLC 20210R-20823
4568	THE BROOKS DEVELOPMENT, LLC 20210R-20823
4569	THE BROOKS DEVELOPMENT, LLC 20210R-20823
4570	THE BROOKS DEVELOPMENT, LLC 20210R-20823
4571	THE BROOKS DEVELOPMENT, LLC 20210R-20823
4572	THE BROOKS DEVELOPMENT, LLC 20210R-20823
4573	THE BROOKS DEVELOPMENT, LLC 20210R-20823
4574	THE BROOKS DEVELOPMENT, LLC 20210R-20823
4575	THE BROOKS DEVELOPMENT, LLC 20210R-20823
4576	THE BROOKS DEVELOPMENT, LLC 20210R-20823
4577	THE BROOKS DEVELOPMENT, LLC 20210R-20823
4578	THE BROOKS DEVELOPMENT, LLC 20210R-20823
4579	THE BROOKS DEVELOPMENT, LLC 20210R-20823
4580	THE BROOKS DEVELOPMENT, LLC 20210R-20823

PREPARED BY: MIAMI COUNTY ENGINEER'S MAP DEPARTMENT
PAUL P. HUELSKAMP, P.E., P.S., COUNTY ENGINEER
DATE: February 18, 2022 M5TORMS
REVISED: November 10, 2022 KCONNORS

ABBREVIATION LEGEND	LINE LEGEND	SURVEY INDEX
20140R-00759 = RECORDER'S DOCUMENT NUMBER OR 406-509 = OFFICIAL RECORD 406 PAGE 509	— Blow-up Boundary	LND LOT REC
D.B. 613-172 = DEED BOOK 613, PAGE 172	— Property Line	LND 45-62 LOT 24-108 REC 19-117
REC. 15-72 = RECORDER'S PLAT BOOK 15, PAGE 72	- - - Lot Split Line	LND 46-109 LOT 24-142 REC 23-79
LND. 33-15 = LAND SURVEY VOLUME 33, PAGE 15	- - - Section Line	LND 60-181 REC 25-2
LOT 19-12 = LOT SURVEY VOLUME 19, PAGE 12	- - - Centerline	REC 26-35
R.R. 8-29 = ROAD RECORD VOLUME 8, PAGE 29	- - - Right-of-Way Line	REC 29-49
R/W = RIGHT OF WAY	- - - Corporation Line	
CL = CENTERLINE		
AC. = ACRES		
TWP. = TOWNSHIP		
TR. = TRACT		
IL = INLOT		

