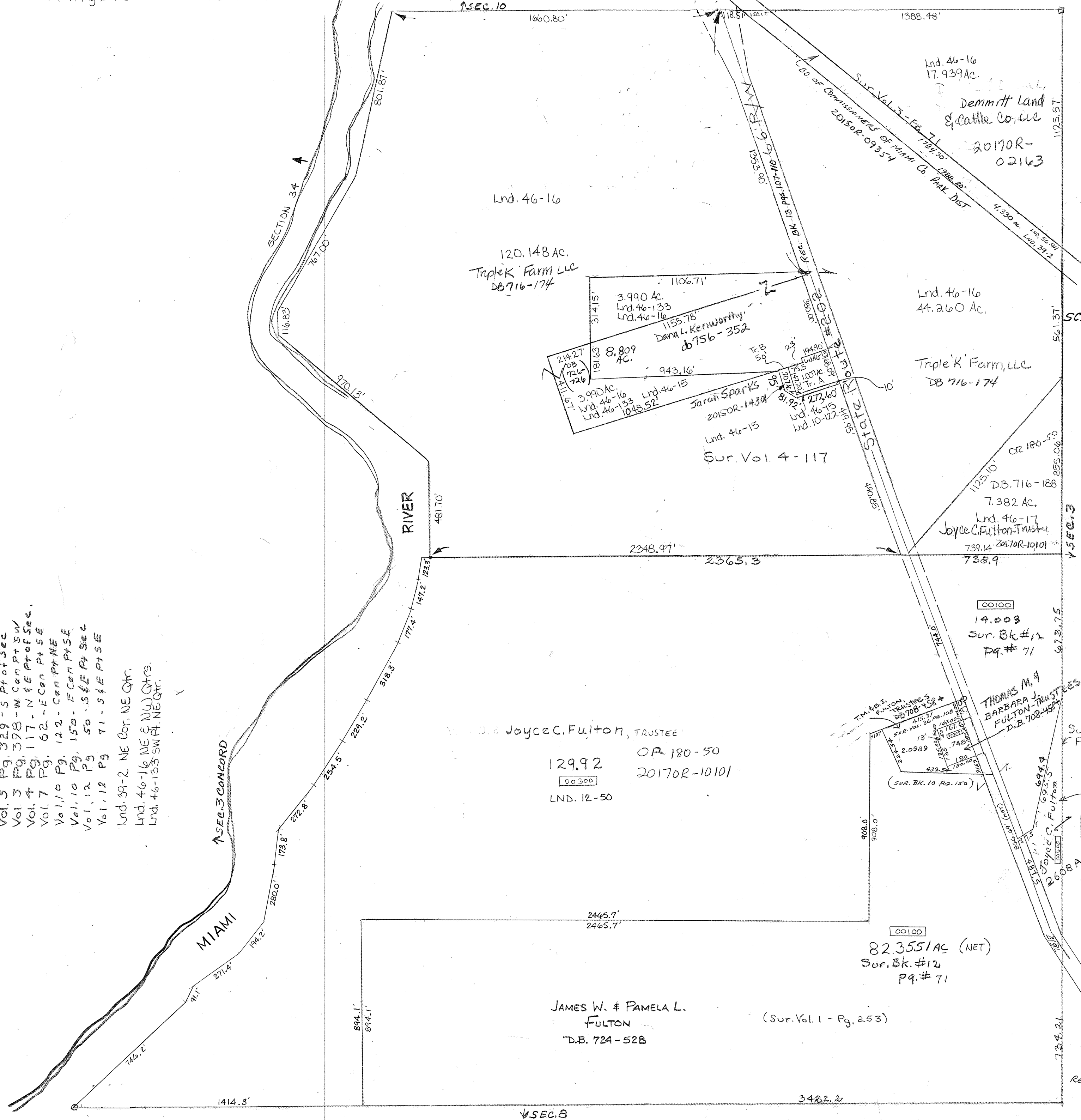


SMDA NUMBER  
K30-ST016



SCALE - 1" = 330'

- Surveys**
- Vol. 1 Pg. 253 - S 1/4 Pt of Sec 71 - NE Cor. NE
  - Vol. 3 Pg. 329 - S Pt of Sec 398 - W Cont Pt SW
  - Vol. 4 Pg. 117 - N 1/4 Pt of Sec 62 - E Cor Pt SE
  - Vol. 7 Pg. 122 - E Cor Pt NE
  - Vol. 10 Pg. 150 - E Cor Pt SE
  - Vol. 12 Pg. 50 - S 1/4 Pt Sec 71 - S 1/4 Pt SE
  - Vol. 12 Pg. 71 - S 1/4 Pt SE
  - Lnd. 39-2 NE Cor. NE Qtr.
  - Lnd. 46-16 NE & NW Qtrs.
  - Lnd. 46-133 SW Pt. NE Qtr.



Lnd. 46-16  
120.148 Ac.  
Triple K Farm LLC  
DB 716-174

3.990 Ac.  
Lnd. 46-133  
Lnd. 46-16  
Dana L. Kenworthy  
db 756-352

8.809 Ac.  
Lnd. 46-15  
Lnd. 46-133  
Lnd. 46-16  
Sarah Sparks  
2015OR-14304  
Lnd. 46-15  
Sur. Vol. 4-117

Lnd. 46-16  
17.939 Ac.  
Demmitt Land  
& Cattle Co. LLC  
2017OR-02163

Lnd. 46-16  
44.260 Ac.  
Triple K Farm, LLC  
DB 716-174

Lnd. 46-17  
7.382 Ac.  
Joyce C. Fulton Trustee  
739.14 2017OR-10101

14.003  
Sur. Bk #12  
Pg. # 71

Joyce C. Fulton, TRUSTEE  
129.92 OR 180-50  
2017OR-10101  
LND. 12-50

82.355 AC (NET)  
Sur. Bk. #12  
Pg. # 71

JAMES W. & PAMELA L. FULTON  
D.B. 724-528  
(Sur. Vol. 1 - Pg. 253)