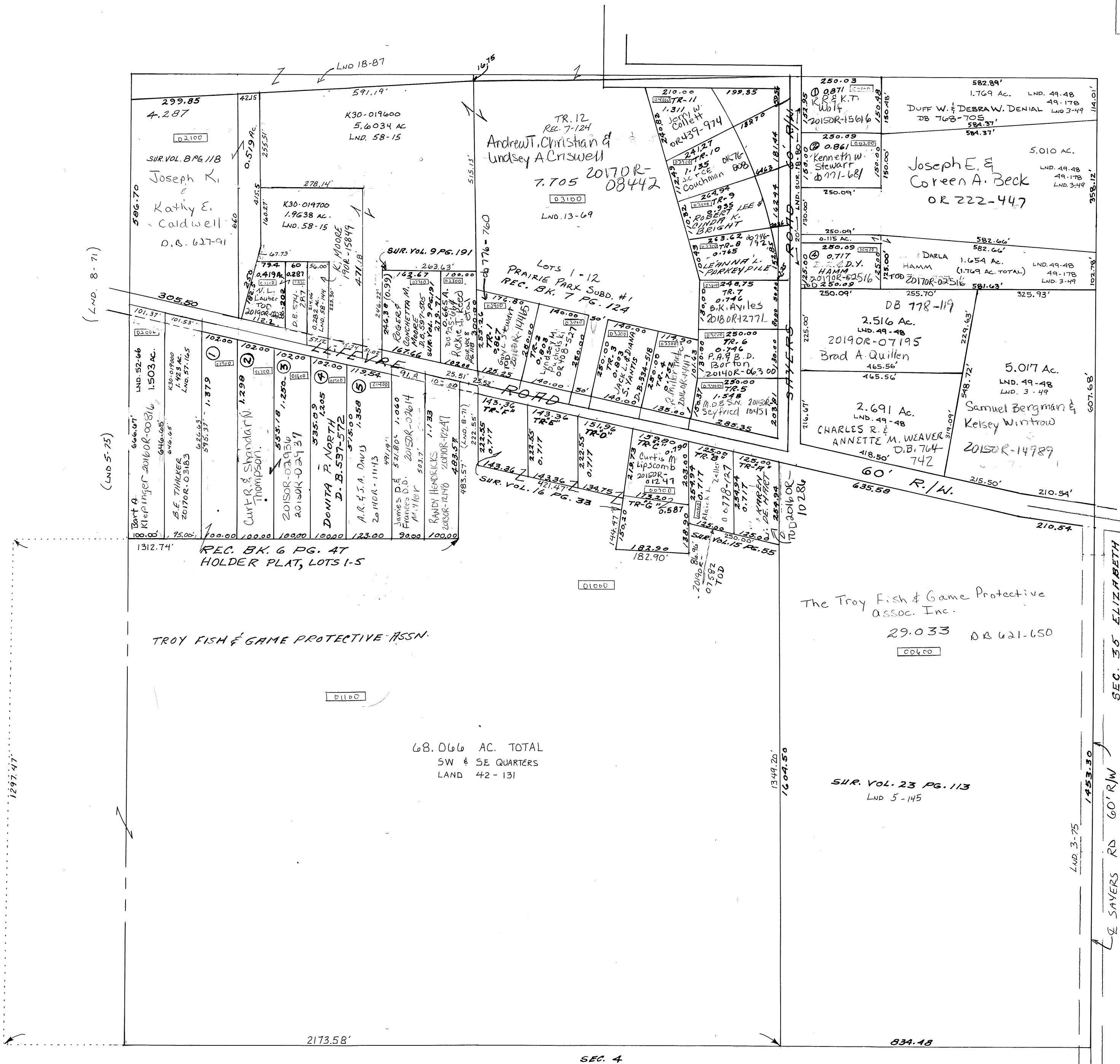


SMDA NUMBER
K30-ST009D-



1297.47'

(LND. 8-71)

(LND 5-75)

REC. BK. 6 PG. 47
HOLDER PLAT, LOTS 1-5

TROY FISH & GAME PROTECTIVE ASSN.

68.066 AC. TOTAL
SW & SE QUARTERS
LAND 42-131

The Troy Fish & Game Protective
Assoc. Inc.
29.033 DB 621-650

SUR. VOL. 23 PG. 113
LND 5-145

SEC. 35 ELIZABETH

SAVERS RD 60' R/W

SEC. 4