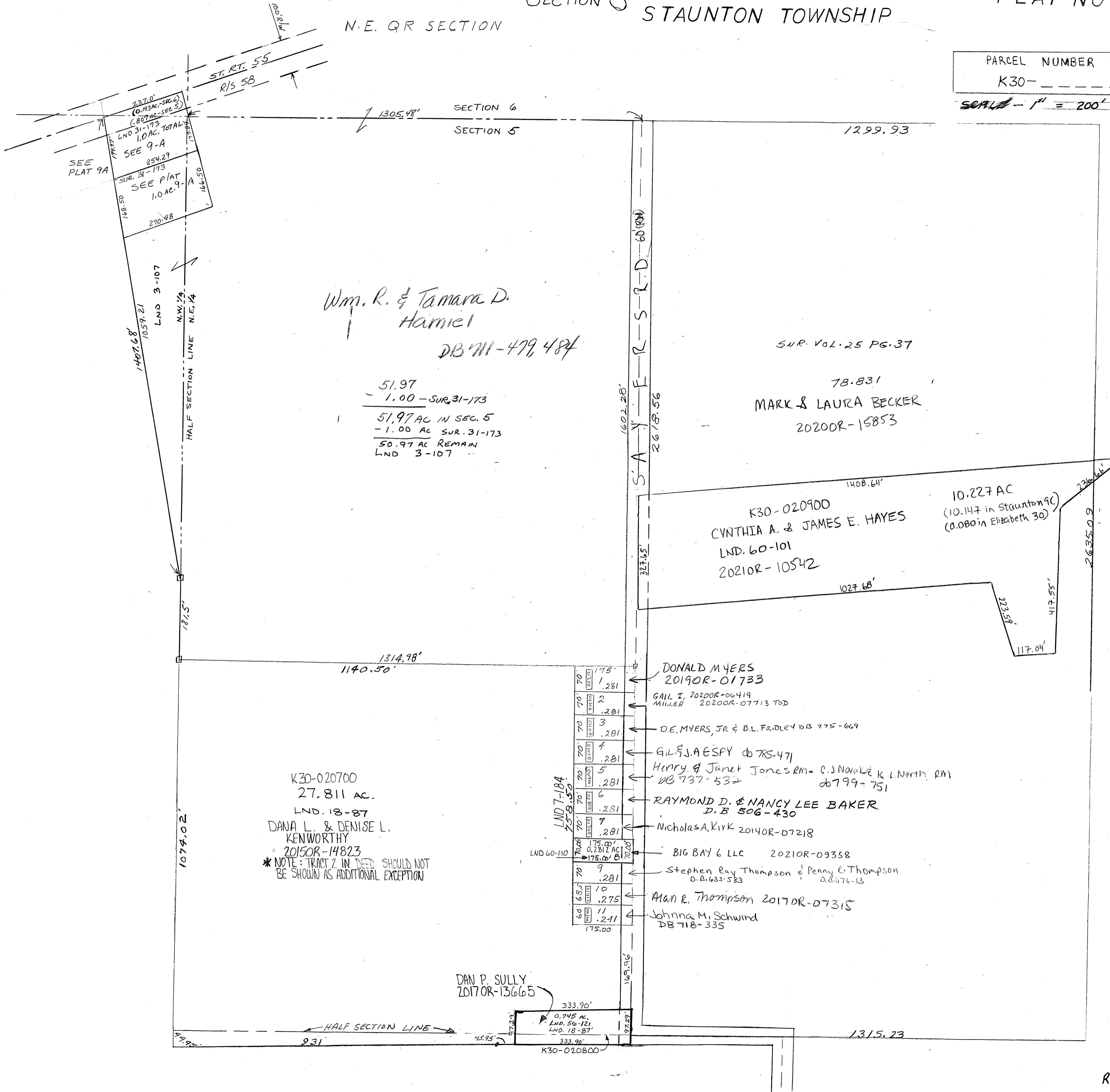
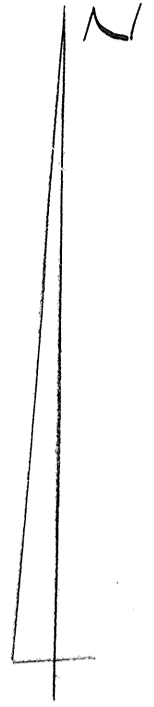


RANGE 10 TOWN 1 SECTION 5 STAUNTON TOWNSHIP
N.E. QR SECTION

PLAT NO 9-C

SEC. 5
N.E. 1/4

PARCEL NUMBER
K30-
SCALE 1" = 200'



SEE PLAT 9A
LND 31-173
SEE 9-A
SUR. 31-173
SEE PLAT
1.0 AC. 9-A
270.48

Wm. R. & Tamara D.
Hamiel
DB 711-479,484

51.97
- 1.00 - SUR. 31-173
51.97 AC IN SEC. 5
- 1.00 AC SUR. 31-173
50.97 AC REMAIN
LND 3-107

SNR. VOL. 25 PG. 37
78.831
MARK & LAURA BECKER
2020OR-15853

K30-020900
CYNTHIA A. & JAMES E. HAYES
LND. 60-101
2021OR-10542

10.227 AC
(10.147 in Staunton 9C)
(0.080 in Elizabeth 30)

K30-020700
27.811 AC.
LND. 18-87
DANA L. & DENISE L.
KENWORTHY
2015OR-14823
*NOTE: TRACT 2 IN DEED SHOULD NOT
BE SHOWN AS ADDITIONAL EXCEPTION

- | | | |
|-----|-------|--|
| 70' | 1.281 | DONALD MYERS
2019OR-01733 |
| 70' | .281 | GAIL Z. MILLER 2020OR-06419
2020OR-07713 TOD |
| 70' | .281 | D.E. MYERS, JR & B.L. FRIDLEY DB 775-669 |
| 70' | .281 | GIL E. J. A. ESPY DB 785-471 |
| 70' | .281 | Henry & Janet Jones RM - C. J. NAWLE K. L. NORTH RM
DB 737-532 DB 799-751 |
| 70' | .281 | RAYMOND D. & NANCY LEE BAKER
D.B 506-430 |
| 70' | .281 | Nicholas A. Kirk 2014OR-07218 |
| 70' | .281 | BIG BAY 6 LLC 2021OR-09358 |
| 70' | .281 | Stephen Ray Thompson & Penny E. Thompson
D.B. 633-583 D.B. 676-13 |
| 60' | .275 | Alan R. Thompson 2017OR-07315 |
| 60' | .241 | Johnna M. Schwind
DB 718-335 |

DAN P. SULLY
2017OR-13665

0.745 AC
LND. 56-121
LND. 18-87
333.90'
K30-020800