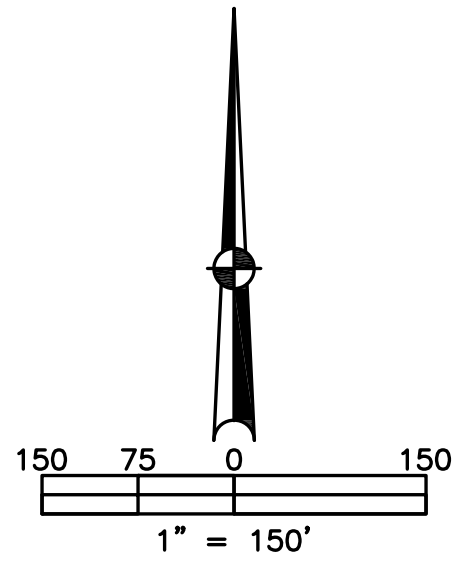


STAUNTON TOWNSHIP  
MIAMI COUNTY, OHIO

SECTION 13 TOWN 1 RANGE 11  
NORTHWEST QUARTER

PARCEL NUMBER  
K30-\_\_\_\_\_

PLAT 21B



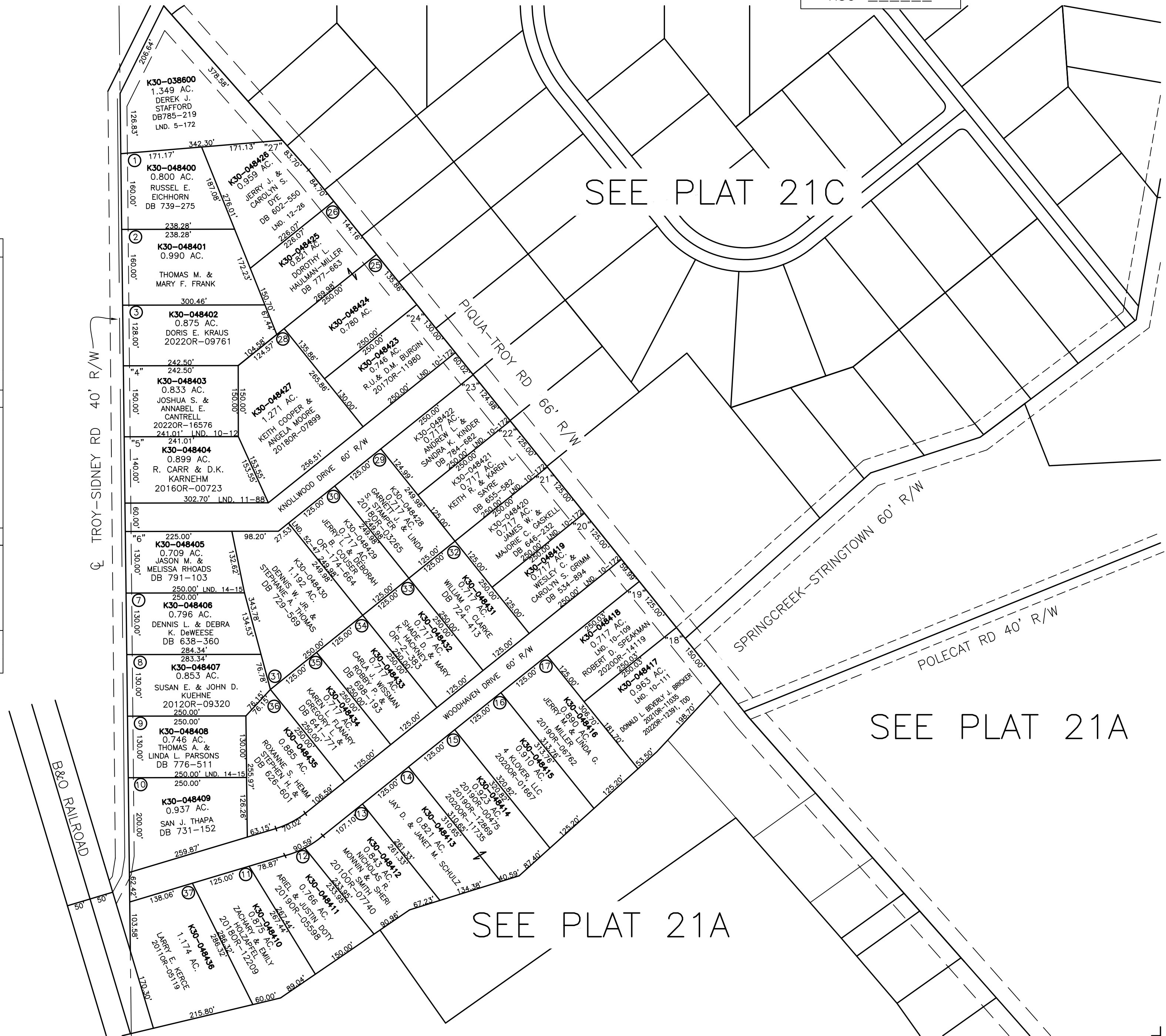
ABBREVIATION LEGEND		
2014OR-00759	=	RECORDER'S DOCUMENT NUMBER
OR 406-509	=	OFFICIAL RECORD 406 PAGE 509
D.B. 613-172	=	DEED BOOK 613, PAGE 172
REC. 15-72	=	RECORDER'S PLAT BOOK 15, PAGE 72
LND. 33-15	=	LAND SURVEY VOLUME 33, PAGE 15
LOT 19-12	=	LOT SURVEY VOLUME 19, PAGE 12
R.R. 8-29	=	ROAD RECORD VOLUME 8, PAGE 29
R/W	=	RIGHT OF WAY
CL	=	CENTERLINE
AC.	=	ACRES
TWP.	=	TOWNSHIP
TR.	=	TRACT
IL	=	INLOT
"27"	=	LOT NUMBERS INCLUDED IN PLAT ONLY USED FOR AUDITOR'S REFERENCE.

LINE LEGEND	
	Blow-up Boundary
	Property Line
	Lot Split Line
	Section Line
	Centerline
	Right-of-Way Line
	Corporation Line

SURVEY INDEX		
LAND SURVEY	LOT SURVEY	RECORD PLAT
LND 5-172		REC 8-17
LND 10-12		
LND 10-109		
LND 10-111		
LND 10-172		
LND 11-88		
LND 12-26		
LND 14-15		



SEE PLAT 21A

SEE PLAT 21A