

RUSK # 87

SUR. VOL. 19 - PG. 47

60 R/W

SMDA NUMBER
K30-ST004

SCALE - 1" = 330

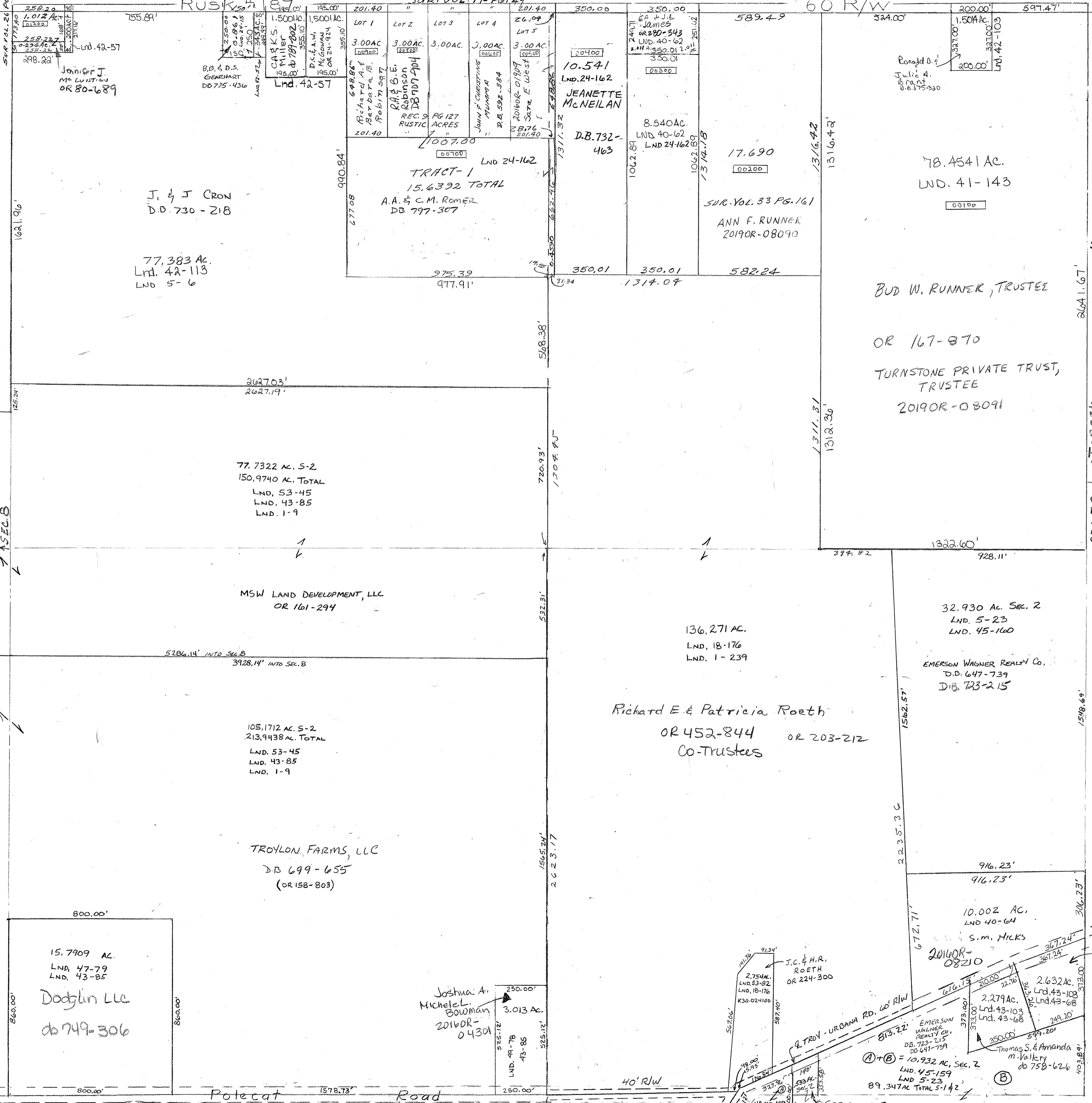


Surveys

Vol. 1 Pg. 9 - W 1/2 Sec
 Vol. 1 Pg. 239 - SE QTR
 Vol. 5 Pg. 6 - N 1/4 NW
 Vol. 5 Pg. 23 - E Side SE

Lnd. 43-68 SE Pt. SE Qtr.
 Lnd. 43-103 SE Pt. SE Qtr.
 Lnd. 49-78 SE Pt. SW Qtr.

Lnd. 40-64 SE 1/4
 Lnd. 41-143 NE 1/4
 Lnd. 42-57 NW Qtr. NW Qtr. & N. Cen. Pt. NW Qtr.
 Lnd. 42-103 NE Cor. NE Qtr.
 Lnd. 42-113 N. Cen. Pt. NW Qtr.



15,790.9 AC.
 LND. 47-79
 LND. 43-85
DODGLEN LLC
 db 749-306

TROYLON FARMS, LLC
 DB 699-655
 (OR 158-803)

Richard E. & Patricia Roeth
 OR 452-844 OR 203-212
 Co-Trustees

32,930 AC. Sec. 2
 LND. 5-23
 LND. 45-160
EMERSON WAGNER REALTY CO.
 D.D. 647-739
 DB 723-215

10,002 AC.
 LND 40-64
S.M. HICKS

2,279 AC.
 Lnd. 43-103
 Lnd. 43-68
EMERSON WAGNER REALTY CO.
 DB 723-215
 DB 647-739

Teresa Kenney
 190R-06772

10,932 AC, Sec. 2
 LND. 45-159
 LND. 5-23
 89,347 AC TOTAL 5-142

REVISED 1-26-2012
 D. VENTURA