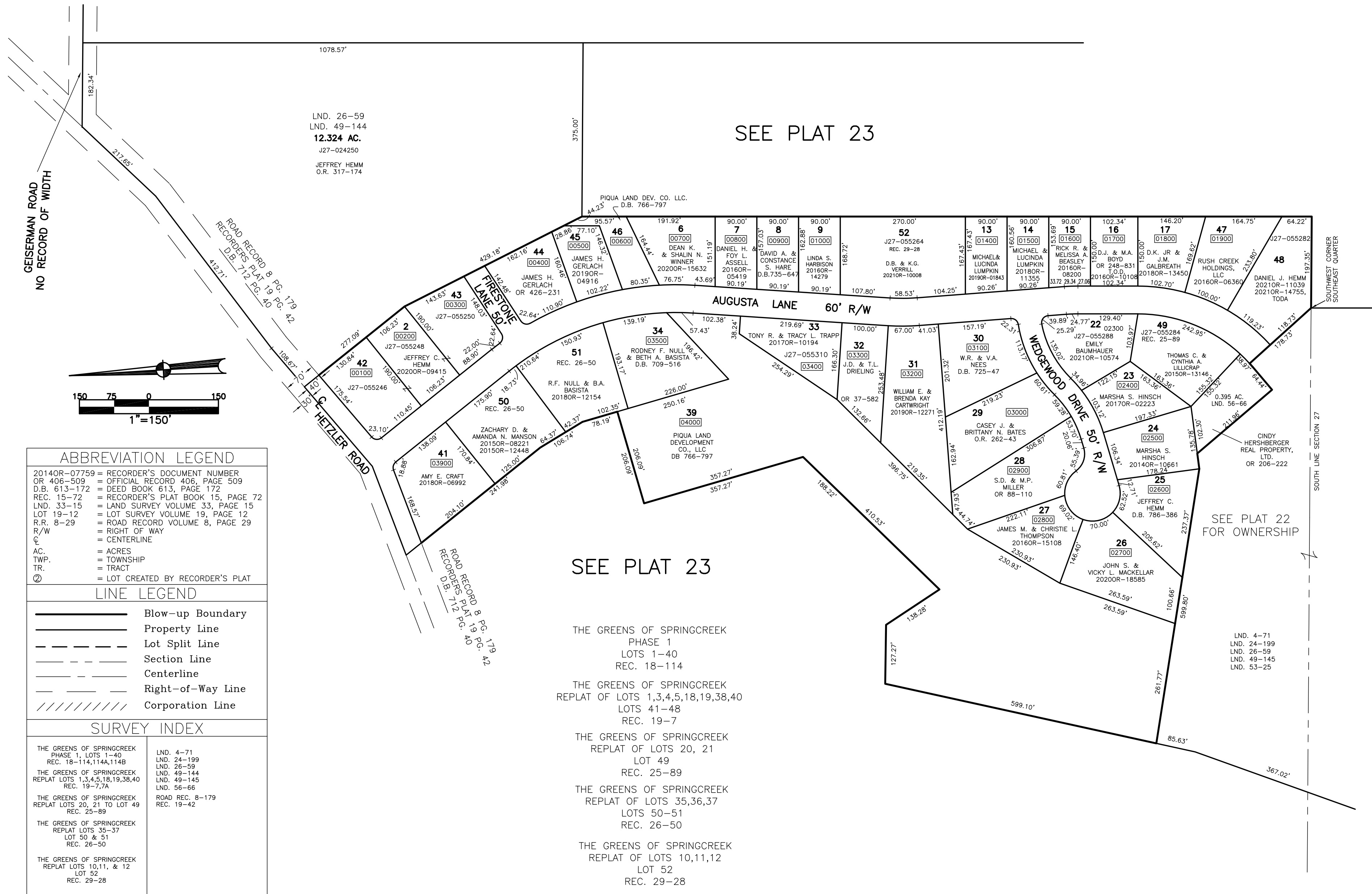


SPRING CREEK TOWNSHIP
MIAMI COUNTY, OHIO

SOUTH PART FRACTIONAL
SECTION 27 TOWN 1 RANGE 12

PLAT 23A

PARCEL NUMBER
J27-_____



ABBREVIATION LEGEND	
2014OR-07759	= RECORDER'S DOCUMENT NUMBER OR 406-509
D.B. 613-172	= DEED BOOK 613, PAGE 172
REC. 15-72	= RECORDER'S PLAT BOOK 15, PAGE 72
LND. 33-15	= LAND SURVEY VOLUME 33, PAGE 15
LOT 19-12	= LOT SURVEY VOLUME 19, PAGE 12
R.R. 8-29	= ROAD RECORD VOLUME 8, PAGE 29
R/W	= RIGHT OF WAY
CL	= CENTERLINE
AC.	= ACRES
TWP.	= TOWNSHIP
TR.	= TRACT
Ⓢ	= LOT CREATED BY RECORDER'S PLAT

LINE LEGEND	
	Blow-up Boundary
	Property Line
	Lot Split Line
	Section Line
	Centerline
	Right-of-Way Line
	Corporation Line

SURVEY INDEX	
THE GREENS OF SPRINGCREEK PHASE 1, LOTS 1-40 REC. 18-114,114A,114B	LND. 4-71 LND. 24-199 LND. 26-59
THE GREENS OF SPRINGCREEK REPLAT LOTS 1,3,4,5,18,19,38,40 REC. 19-77A	LND. 49-144 LND. 49-145 LND. 56-66
THE GREENS OF SPRINGCREEK REPLAT LOTS 20, 21 TO LOT 49 REC. 25-89	ROAD REC. 8-179 REC. 19-42
THE GREENS OF SPRINGCREEK REPLAT LOTS 35-37 LOT 50 & 51 REC. 26-50	
THE GREENS OF SPRINGCREEK REPLAT LOTS 10,11, & 12 LOT 52 REC. 29-28	

PREPARED BY: MIAMI COUNTY ENGINEER'S MAP DEPARTMENT
PAUL P. HUELSKAMP, COUNTY ENGINEER
DATE: FEBRUARY 14, 2000
REVISED: October 28, 2021 MSTORMS

SEE PLAT 23

THE GREENS OF SPRINGCREEK
PHASE 1
LOTS 1-40
REC. 18-114

THE GREENS OF SPRINGCREEK
REPLAT OF LOTS 1,3,4,5,18,19,38,40
LOTS 41-48
REC. 19-77

THE GREENS OF SPRINGCREEK
REPLAT OF LOTS 20, 21
LOT 49
REC. 25-89

THE GREENS OF SPRINGCREEK
REPLAT OF LOTS 35,36,37
LOTS 50-51
REC. 26-50

THE GREENS OF SPRINGCREEK
REPLAT OF LOTS 10,11,12
LOT 52
REC. 29-28

SEE PLAT 22
FOR OWNERSHIP

SEE PLAT 23